



Certified Power Inc.
DRIVELINE DIVISION

Parts Catalog



Table of Contents

Cross & Bearing Kits 3
 End Yokes (Wing Bearing)..... 7
 End Yokes (Round Bearing)..... 19
 Slip Yokes (Wing Bearing)..... 27
 Slip Yokes (Round Bearing)..... 31
 Weld Yokes (Wing Bearing) 34
 Weld Yokes (Round Bearing)..... 37
 Yoke Shafts (Wing Bearing)..... 40
 Yoke Shafts (Round Bearing)..... 43
 Brake Yokes (Wing Bearing)..... 45
 Flange Yoke (Wing Style) 47
 Flange Yokes (Round Bearing) 49
 Transmission Yokes (Wing Bearing)..... 51
 Transmission Yokes (Round Bearing)..... 52
 Center Yokes (Wing and Round Bearing)..... 53
 Slip Stubs 55
 Bearing Stubs 59
 Slip Bearing Stubs..... 62
 Companion Flanges 63

Ratings determined by parts
 made per year.

- A = 301 or more
- B = 51-300
- C = 6-50
- D = 0-5

* Dimensions listed in this catalog are not guaranteed. Please speak with a salesperson prior to your purchase to make sure the part is compatible.



Cross & Bearing Kits

ISR = Inside Snap Ring
OSR = Outside Snap Ring
BP = Bearing Plate
HR = Half Round

Key

LWT = Low Wing Threaded
LWD = Low Wing Drilled
HWD = High Wing Drilled
DWT = Delta Wing Threaded

Series	Bearing Style # 1	Bearing Style # 2	Zerk Location	Part Number	Comments	Rating
1.5R	ISR	ISR	Side	W1514		B
1000	ISR	ISR	Side	R103	For Steering Shafts	D
1000	ISR	ISR	Side	R170		A
1000xL6N	ISR	ISR	Side	R430	Conversion Joint	D
1100	ISR	ISR	Side	R101		A
1310x1330	OSR	OSR	Side	R134	Conversion Joint	D
1310	OSR	OSR	Side	R153		A
1310x2C	OSR	LWT	Side	R291	Conversion Joint	B
1310x2R	OSR	ISR	Side	R292	Conversion Joint	D
1310x3C	OSR	LWT	Side	R356	Conversion Joint	B
1330	OSR	OSR	Side	R213		D
1350	OSR	OSR	Side	R178		A
1410	OSR	OSR	Side	R160		A
1410x4C	OSR	HWD	Side	R345	Conversion Joint	C
1410x4C	OSR	DWT	Side	R346	Conversion Joint	C
1480	OSR	OSR	Side	R188		A
1480x5C	OSR	HWD	Side	R347	Conversion Joint	A
1480x5C	OSR	LWT	Side	R348	Conversion Joint	A
1500	BP	BP	Side	R115		D
1550	OSR	OSR	Side	R155		D
1550x6C	OSR	LWT	Side	R220	Conversion Joint	D
1550x6C	OSR	HWD	Side	R221	Conversion Joint	A
1550x5.8C	OSR	HWD	Side	R328	Conversion Joint	C
1610	BP	BP	Side	R279		A
1610	BP	OSR	Side	R438		C
1650	OSR	OSR	Side	R165		D
1710	BP	BP	Side	R280		A
1710	BP	BP	Side	R2805	(2) Zerks in Cross	A
1710	BP	HR	Side	R515		B
1760	BP	BP	Side	R407		C
1800	BP	BP	Side	R124		D



Series	Bearing Style # 1	Bearing Style # 2	Zerk Location	Part Number	Comments	Rating
1810	BP	BP	Side	R281		A
1810x9C	BP	HWD	Side	R324	Conversion Joint	D
1810	BP	OSR	Side	R510		D
1880	BP	BP	Side	R308		C
1910	OSR	OSR	Side	R316		D
2Cx2R	LWD	ISR	Side	522	Conversion Joint	D
2C	LWD	LWD	Side	W2117		B
2Cx2R	LWT	ISR	Side	961	Conversion Joint	A
2C	LWT	LWT	Side	W2171		D
2C	LWT	LWT	Cap	W2171S		A
2C	LWT	LWD	Side	W2172		D
2C	LWT	LWD	Cap	W2172S		A
2Cx1310	LWT	OSR	Side	R291	Conversion Joint	B
2R	ISR	ISR	Side	W2101		C
2Rx1310	ISR	OSR	Side	R292	Conversion Joint	D
2Rx2C	ISR	LWD	Side	522	Conversion Joint	D
2Rx2C	ISR	LWT	Side	961	Conversion Joint	A
3C	HWD	HWD	Side	967		D
3Cx3R	HWD	ISR	Side	998	Conversion Joint	B
3C	LWD	LWD	Cap	W3161S		B
3C	LWT	LWD	Side	W3150		D
3C	LWT	LWT	Side	W3152		C
3C	LWT	HWD	Side	W3158		C
3Cx1310	LWT	OSR	Side	R356	Conversion Joint	B
3R	ISR	ISR	Side	W3105		B
3Rx3C	ISR	HWD	Side	998	Conversion Joint	B
44R	ISR	ISR	Side	R431		D
4Cx1410	DWT	OSR	Side	R346	Conversion Joint	C
4C	HWD	HWD	Side	969		C
4C	HWD	HWD	Side	W4143		B
4Cx1410	HWD	OSR	Side	R345	Conversion Joint	C
4C	LWD	LWD	Side	W4104		B
4C	LWD	HWD	Side	W4141		D
4C	LWT	LWD	Side	W4123		A
4C	LWT	LWT	Side	W4138		A
4C	LWT	HWD	Side	W4140		B
4Cx4R	LWT	ISR	Side	W4152	Conversion Joint	D
4Rx4C	ISR	LWT	Side	W4152	Conversion Joint	D
5.8C	DWT	DWT	Side	CP58WB-DWT		D



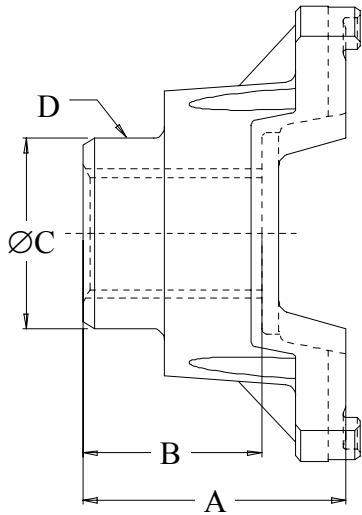
Series	Bearing Style # 1	Bearing Style # 2	Zerk Location	Part Number	Comments	Rating
5.8C	DWT	HWD	Side	CP58WB-HB		D
5.8C	HWD	HWD	Side	CP58WB-HWD		D
5.8Cx1550	HWD	OSR	Side	R328	Conversion Joint	C
55N	OSR	OSR	Side	R432		C
5Cx5R	HWD	ISR	Side	W5154	Conversion Joint	C
5C	HWD	HWD	Side	W5177		A
5C	HWD	HWD	Side	W5177T	Milled HWD Cap for Access	C
5Cx1480	HWD	OSR	Side	R347	Conversion Joint	A
5Cx1480	LWT	OSR	Side	R348	Conversion Joint	A
5C	LWD	LWD	Side	W5148		D
5C	LWT	LWT	Side	W5122		A
5C	LWT	LWD	Side	W5127		A
5Cx5R	LWT	ISR	Side	W5132	Conversion Joint	C
5C	LWT	HWD	Side	W5173		C
5C	LWT	HWD	Cap	W5173S		A
5C	LWT	HWD	Side	W5173F	Milled HWD Cap for Access	A
5Rx5C	ISR	LWT	Side	W5132	Conversion Joint	C
5Rx5C	ISR	HWD	Side	W5154	Conversion Joint	C
6C	HWD	HWD	Side	W6128		A
6Cx7C	HWD	HWD	Side	W6166	Conversion Joint	C
6Cx1550	HWD	OSR	Side	R221	Conversion Joint	A
6C	LWD	LWD	Side	W6104		D
6C	LWD	HWD	Side	W6149		D
6C	LWT	HWD	Side	W6114		A
6C	LWT	HWD	Side	W6125	(2) Zerks in Cross	D
6C	LWT	LWT	Side	W6143		A
6C	LWT	LWD	Side	W6152		D
6Cx7C	LWT	LWT	Side	W6162	Conversion Joint	B
6Cx7C	LWT	HWD	Side	W6163	Conversion Joint	A
6Cx1550	LWT	OSR	Side	R220	Conversion Joint	D
6R	ISR	ISR	Side	W6135		D
750N	OSR	OSR	Side	CP750N-1		B
7C	HWD	HWD	Side	W7126		A
7Cx6C	HWD	LWT	Side	W6163	Conversion Joint	A
7Cx6C	HWD	HWD	Side	W6166	Conversion Joint	C
7C	LWD	HWD	Side	W7204		D



Series	Bearing Style # 1	Bearing Style # 2	Zerk Location	Part Number	Comments	Rating
7C	LWD	LWD	Side	W7208		D
7C	LWT	LWT	Side	W7205		A
7C	LWT	LWD	Side	W7206		C
7C	LWT	HWD	Side	W7207		A
7Cx6C	LWT	LWT	Side	W6162	Conversion Joint	B
7N	BP	BP	Side	CP7N		D
8.5C	HWD	HWD	Body	W8516		A
8.5C	LWD	LWD	Side	W8575		C
8.5C	LWD	HWD	Side	W8585		B
8.5C	LWT	LWT	Side	W8500		C
8.5C	LWT	HWD	Side	W8515		D
8C	HWD	HWD	Side	W8113		A
8C	LWD	LWD	Side	W8208		D
8C	LWD	HWD	Side	W8209		D
8C	LWT	LWT	Side	W8205		C
8C	LWT	LWD	Side	W8206		D
8C	LWT	HWD	Side	W8207		B
9C	HWD	HWD	Side	W9016		B
9Cx1810	HWD	BP	Side	R324	Conversion joint	D
9C	LWT	LWT	Side	W9014		B
9C	LWT	HWD	Side	W9017		C
9C	LWT	LWD	Side	W9026		B
L6N	ISR	ISR	Side	CPL6R-30		C
L6Nx1000	ISR	ISR	Side	R430	Conversion Joint	D



End Yokes (Wing Bearing)



* = Straight Bores

Style

D = Drilled

T = Threaded

Surface

R = Rough

T = Turned

G = Ground

P = Polished

Series	Spline/Key	Overall Length "A"	Length Thru Bore "B"	Hub Diameter "C"	Surface Type "D"	Mount Style	Part Number	Rating
2C	0.500	2.813	2.563	1.750	Rough	D	2C-SF*	C
2C	0.500	2.813	2.563	1.750	Rough	T	2C-SFT*	D
2C	.70-10	1.813	1.313	2.063	Turned	D	2C-61-12330	D
2C	.70-10	1.813	1.313	2.063	Turned	T	2C-105-0126	C
2C	.87-13	2.438	2.188	1.750	Rough	D	2C-40314	D
2C	.87-13	2.438	2.188	1.750	Rough	D	2C-53764	B
2C	.88-.25K	2.063	1.375	1.968	Turned	D	2C-24860J	D
2C	1.00-.25K	2.000	1.500	1.750	Turned	D	2C-5557J	D
2C	1.00-15	1.500	1.000	1.775	Rough	D	2C-61-8480	D
2C	1.12-10	1.313	1.063	2.000	Rough	T	2C-28D-571	C
2C	1.12-10	1.438	.875	1.625	Ground	T	2C-25739J	D
2C	1.12-10	1.844	1.563	1.625	Turned	T	2C-28C-205	D
2C	1.12-10	2.813	2.718	1.625	Ground	D	2C-28D-046	D
2C	1.25-.25K	2.670	2.410	1.780	Rough	D	2C-117380	D
2C	1.25-.31K	2.031	1.790	2.000	Rough	D	2C-61-6050	C
2C	1.25-.31K	2.063	1.625	2.063	Turned	D	2C-8560J	A
2C	1.25-.31K	2.780	2.520	1.750	Rough	D	2C-201566	D
2C	1.25-.31K	2.938	2.625	2.063	Polished	D	2C-24681J	D
2C	1.25-14	1.860	1.625	2.063	--	D	2C-20845J	D
2C	1.25-14	1.900	1.660	2.063	Rough	T	2C-61-15090	C
2C	1.25-14	2.031	1.063	1.750	Ground	D	2C-12294717	D
2C	1.25-14	2.047	1.750	1.813	Turned	D	2C-61-8580	D
2C	1.25-14	2.313	2.000	1.750	Rough	D	2C-61-13481	D
2C	1.37-10	1.313	1.030	2.190	Rough	T	2C-24068J	C
2C	1.37-10	2.813	2.563	1.750	Rough	T	2C-SFT-1.375-10	D



Series	Spline/Key	Overall Length "A"	Length Thru Bore "B"	Hub Diameter "C"	Surface Type "D"	Mount Style	Part Number	Rating
2C	1.37-21	2.000	1.770	2.052	Turned	T	2C-25461J	D
2C	1.50-0.00K	2.060	1.820	2.000	Turned	D	2C-8561J	D
2C	1.50-10	1.750	1.250	2.000	Turned	D	2C-32422J	C
3C	0.750	2.688	1.875	1.938	Turned	D	3C-4945J*	D
3C	0.750	2.900	2.344	2.344	Rough	D	3C-SF*	C
3C	0.750	2.900	2.344	2.344	Rough	T	3C-SFT*	D
3C	.87-13	1.750	1.250	2.406	Rough	T	3C-56630	C
3C	.87-13	2.688	1.875	1.938	Turned	D	3C-24412J	D
3C	.90-13	2.313	1.625	1.875	Turned	D	3C-28384J	C
3C	1.00-15	1.750	1.290	2.000	Turned	T	3C-73643	A
3C	1.00-6	2.560	1.560	1.937	Turned	T	3C-61-15950	D
3C	1.00-6	2.563	1.563	1.938	Turned	D	3C-61-9760	D
3C	1.09-.25K	2.438	1.625	1.938	Turned	D	3C-61-7010	D
3C	1.25-.25K	2.688	2.230	1.880	Turned	D	3C-61-10940	D
3C	1.25-10	2.766	1.875	1.750	Turned	D	3C-23231J	D
3C	1.25-14	2.125	1.670	2.000	Turned	T	3C-61-13140	B
3C	1.25-14	2.313	1.438	2.000	Turned	D	3C-11690J	D
3C	1.25-14	2.313	1.500	2.000	Turned	D	3C-11635J	D
3C	1.25-14	2.813	1.938	2.344	Rough	T	3C-28160J	D
3C	1.25-6	2.840	2.000	1.875	Ground	D	3C-61-0690	D
3C	1.25-6	2.844	2.000	1.875	Ground	D	3C-7306J	B
3C	1.37-10	2.438	1.500	2.000	Turned	D	3C-7305J	D
3C	1.37-10	2.438	1.500	2.125	Polished	D	3C-70109	D
3C	1.37-10	2.640	1.750	2.000	Ground	D	3C-4279J	D
3C	1.50-17	2.375	1.625	2.000	Ground	D	3C-61-16240	B
3C	1.50-17	2.719	2.040	1.875	Ground	D	3C-29579	D
3C	1.75-10	2.625	1.625	2.250	Turned	D	3C-61-14710	D
3R	1.37-21	3.625	1.625	2.609	Rough	S	3R-14259J	D
3R	1.50-17	3.344	1.719	2.250	Turned	S	3R-20960J	D
4C	0.750	3.125	2.656	1.625	Rough	D	4C-SFLA*	D
4C	0.750	3.138	2.625	2.063	Rough	T	4C-SFTLA*	D
4C	0.750	3.406	2.563	2.750	Rough	D	4C-55604J-1*	D
4C	0.750	3.718	2.875	3.000	Rough	D	4C-SF*	B
4C	0.750	3.719	2.875	3.000	Rough	T	4C-SFT*	C
4C	1.000	3.625	2.800	2.998	Turned	T	4C-SFT*	C
4C	1.25-14	3.630	2.800	2.990	Turned	T	4C-SFT-14	D
4C	1.25-14	1.434	1.230	2.500	Rough	D	4C-61-8640	D
4C	1.25-14	2.438	1.496	1.625	Ground	T	4C-4-4401	D
4C	1.25-14	2.438	1.938	ROUGH	Rough	T	4C-61-15360	D
4C	1.37-.37K	2.718	2.000	2.188	Turned	D	4C-61-9720	D



Series	Spline/Key	Overall Length "A"	Length Thru Bore "B"	Hub Diameter "C"	Surface Type "D"	Mount Style	Part Number	Rating
4C	1.37-.37K	2.906	2.000	2.250	Turned	D	4C-3782J	D
4C	1.37-.37K	2.969	2.063	2.500	Polished	D	4C-61-8200	D
4C	1.37-10	2.188	1.500	2.125	Ground	D	4C-9999J	D
4C	1.37-10	2.250	1.375		Rough	T	4C-54204J	D
4C	1.37-10	2.280	1.375	2.130	Polished	T	4C-61-9210	D
4C	1.37-10	2.281	1.375	2.125	Ground	T	4C-13902J	D
4C	1.37-10	2.281	1.375	2.250	Rough	D	4C-61-8290	D
4C	1.37-10	2.375	1.875	1.875	--	T	4C-61-15290	D
4C	1.37-10	2.906	2.000	2.125	Ground	D	4C-4743J	C
4C	1.37-10	2.906	2.000	2.125	Polished	D	4C-27748J	C
4C	1.37-10	2.938	1.750	2.125	Polished	T	4C-3897A2185	D
4C	1.37-10	3.093	2.187	2.005	Polished	D	4C-5501J	D
4C	1.37-10	3.438	2.531	2.750	Rough	D	4C-55834J-1	D
4C	1.37-21	2.938	2.438	1.875	Polished	T	4C-61-9670	D
4C	1.37-6	2.563	1.656	1.875	Turned	D	4C-4-3101	D
4C	1.37-10	2.630	1.500	2.125	Turned	D	4C-61-13770	D
4C	1.38-23	3.313	2.500	2.984	Turned	T	4C-61-11260	D
4C	1.50-.38K	3.410	2.563	2.625	Turned	D	4C-5187J	D
4C	1.50-10	2.000	2.687	3.000	Rough	D	4C-61-12870	D
4C	1.50-10	2.656	1.750	2.250	Turned	D	4C-61-13070	D
4C	1.50-10	2.844	1.750	2.064	Ground	D	4C-12980J	D
4C	1.50-10	2.906	2.000	1.875	Polished	D	4C-8994J	D
4C	1.50-10	2.906	2.000	2.125	Polished	D	4C-61-13080	D
4C	1.50-10	2.906	2.000	2.253	Turned	D	4C-4748J	C
4C	1.50-10	2.906	2.000	3.000	Rough	D	4C-23313J	D
4C	1.50-10	3.438	2.531	3.000	Rough	D	4C-61-13090	D
4C	1.50-10	4.188	2.938	2.000	Turned	D	4C-61-9160	D
4C	1.62-.37K	3.406	2.563	3.000	Rough	D	4C-61-8210	D
4C	1.75-.38K	3.406	2.500	2.750	Turned	D	4C-18591J	D
4C	1.75-10	3.090	2.190	2.375	Polished	D	4C-9472J	D
4C	1.75-13	2.188	1.203	2.375	Polished	T	4C-61-2940	D
4C	1.75-13	3.625	2.800	3.000	Polished	T	4C-61-16170	D
5.8C	1.500	4.938	3.813	4.000	Ground	T	5.8C-58WBYR24-6*	D
5.8C	1.75-.37K	4.563	3.438	4.000	Ground	D	5.8C-58WBYR28	D
5.8C	1.75-10	3.813	2.188	2.438	Turned	T	5.8C-58WBYS28-6	D
5C	.88-13	1.750	1.250	3.160	Turned	T	5C-61-12630	D
5C	1.000	3.188	2.250	2.781	Turned	D	5C-4947J*	C
5C	1.000	3.438	2.688	2.813	Rough	D	5C-SF*	B
5C	1.000	3.438	2.688	2.813	Rough	T	5C-SFT*	C



Series	Spline/Key	Overall Length "A"	Length Thru Bore "B"	Hub Diameter "C"	Surface Type "D"	Mount Style	Part Number	Rating
5C	1.00-15	2.310	1.560	2.580	Turned	T	5C-61-12650	A
5C	1.180	5.380	4.380	2.200	Turned	T	5C-SFT-SY	D
5C	1.180	5.380	4.380	2.200	Rough	T	5C-SFT-SY-1	D
5C	1.25-.31K	3.188	2.250	2.750	Turned	D	5C-61-13020	D
5C	1.25-14	2.690	1.750	2.375	Turned	D	5C-16782J	D
5C	1.25-14	2.063	1.813	2.375	Turned	D	5C-16782JN	D
5C	1.25-14	2.875	2.188	2.902	Rough	D	5C-61-14110	D
5C	1.25-14	2.938	1.875	2.250	Turned	T	5C-21052J	C
5C	1.25-14	3.438	2.688	2.813	Rough	D	5C-SF-14	D
5C	1.28-29	2.500	1.500	1.875	Ground	T	5C-61-13950	D
5C	1.37-.37K	2.938	2.000	2.253	Turned	D	5C-4389J	D
5C	1.37-10	2.938	2.000	2.000	Ground	T	5C-61-14630	B
5C	1.37-10	2.438	1.360	2.125	Polished	D	5C-19575J	C
5C	1.37-10	2.938	1.750	1.192	Polished	D	5C-12210J	D
5C	1.37-10	2.938	1.750	2.000	Polished	D	5C-61-7850	D
5C	1.37-10	2.938	1.750	2.125	Polished	T	4C-17786J	D
5C	1.37-10	2.938	2.000	2.125	Turned	D	5C-8065J	C
5C	1.37-10	4.031	1.750	2.130	Polished	T	5C-27944J	D
5C	1.37-6	3.188	2.250	2.781	Turned	D	5C-61-2460	D
5C	1.37-10	3.120	2.190	2.000	Ground	D	5C-5500J	D
5C	1.37-6	3.000	2.060	2.780	Turned	D	5C-61-16410	D
5C	1.50-.37K	2.969	2.000	2.500	Turned	D	5C-3842J	D
5C	1.50-.37K	3.438	2.688	2.813	Rough	D	5C-61-8490	D
5C	1.50-10	2.560	1.620	2.125	Ground	D	5C-16678J	D
5C	1.50-10	2.940	2.000	2.125	Ground	D	5C-6044J	C
5C	1.50-10	3.500	2.190	2.250	Ground	D	5C-12913J	D
5C	1.50-10	2.250	1.375		Rough	T	5C-54205J	D
5C	1.50-10	2.500	1.563	1.772	Polished	D	5C-61-9380	D
5C	1.50-10	2.875	1.938	2.250	Turned	D	5C-4883J	D
5C	1.50-10	2.938	1.750	2.250	Turned	D	5C-8393J	D
5C	1.50-10	2.938	1.750	2.250	Polished	D	5C-61-12640	D
5C	1.50-10	2.938	2.000	2.125	Polished	D	5C-4932J	B
5C	1.50-10	2.938	2.000	2.250	Turned	D	5C-93966	C
5C	1.50-10	2.969	2.031	2.250	Turned	D	5C-8250J	D
5C	1.50-10	3.000	2.063	2.250	Turned	D	5C-4790J	D
5C	1.50-10	3.125	2.188	2.250	Polished	D	5C-16984J	D
5C	1.50-10	3.438	2.594	1.750	Turned	T	5C-61-4794	D
5C	1.50-10	3.468	2.188	2.250	Polished	T	5C-61-13630	D
5C	1.50-17	3.125	2.040	1.875	Ground	T	5C-73620	B
5C	1.50-23	3.000	2.060	2.250	Turned	T	5C-61-11080	D



Series	Spline/Key	Overall Length "A"	Length Thru Bore "B"	Hub Diameter "C"	Surface Type "D"	Mount Style	Part Number	Rating
5C	1.56-24	2.938	2.000	2.125	Polished	D	5C-61-4280	D
5C	1.61-15	2.840	1.940	2.125	Ground	T	5C-15845J	B
5C	1.62-10	3.438	2.125	2.375	Polished	T	5C-3897J2168	D
5C	1.62-10	3.438	2.125	2.375	Polished	T	5C-194545J	D
5C	1.75-.37K	3.188	2.250	2.750	Turned	D	5C-7242J	C
5C	1.75-.37K	3.438	2.688	2.813	Rough	D	5C-61-8500	D
5C	1.75-.37K2	2.813	1.875	2.750	Turned	T	5C-61-12850	D
5C	1.75-.43K	3.188	2.250	2.750	Turned	D	5C-25886J	C
5C	1.75-10	3.180	2.189	2.625	Ground	T	5C-26639J	D
5C	1.75-10	3.125	2.188	2.250	Ground	D	5C-25364J	D
5C	1.75-10	3.125	2.188	2.380	Polished	D	5C-4716J	D
5C	1.75-10	3.438	2.250	2.628	Polished	D	5C-5083J	D
5C	1.75-10	3.450	2.188	2.375	Polished	D	5C-61-7570	D
5C	1.75-10	3.450	2.188	2.375	Polished	D	5C-61-7560	D
5C	1.75-13	3.440	2.690	2.810	Rough	D	5C-SF-1.75-13	C
5C	1.96-10	3.125	1.813	2.594	Turned	D	5C-61-12590	D
5C	1.96-10	3.218	2.280	2.878	Polished	D	5C-4951J	D
5C	1.97-10	3.438	2.688	2.813	Rough	D	5C-SF-1.969-10	D
5C	2.00-.37K	3.938	2.875	3.125	Turned	T	5C-24595J	D
5C	2.00-10	3.172	1.859	2.597	Polished	D	5C-26984J	D
5C	2.00-10	3.188	2.250	2.866	Rough	D	5C-22910J	C
5C	2.24-16	3.500	2.500	3.000	Ground	D	5C-17388J	D
5CM	1.37-10	3.440	2.060	2.810	Rough	T	5CM-61-13330	C
5CM	2.19-.37K	3.938	2.875	3.125		T	5CM-61-15390	D
6C	0.980	4.218	3.060	2.770	Rough	D	6C-SFF*	D
6C	0.980	4.218	3.060	2.770	Rough	T	6C-SFFT*	D
6C	1.000	3.531	2.593	3.125	Rough	D	6C-SF*	C
6C	1.000	3.531	2.593	3.125	Rough	T	6C-SFT*	B
6C	1.000	3.719	2.656	3.125	Rough	D	6C-55606J-1*	D
6C	1.25-14	3.500	2.500	2.810	Rough	T	6C-SFT-14	D
6C	1.25-14	4.219	2.000	2.250	Rough	D	6C-61-8080	D
6C	1.27-29	3.188	1.500	1.875	Ground	T	6C-070UE116	C
6C	1.37-.37K	3.063	2.000	2.253	Ground	D	6C-5104J	D
6C	1.38-10	2.938	1.750	2.125	Polished	D	6C-61-12290	D
6C	1.50-.37K	3.063	2.000	2.500	Ground	D	6C-3596J	D
6C	1.50-10	3.063	2.000	2.125	Turned	T	6C-17688J	D
6C	1.50-10	3.063	2.000	2.500	Polished	D	6C-61-8650	D
6C	1.50-10	3.250	2.188	2.000	Polished	T	6C-61-6990	D
6C	1.50-10	3.438	2.100	2.563	Polished	T	6C-61-13630	D
6C	1.50-10	3.470	2.188	2.250	Ground	D	6C-11998J	D



Series	Spline/Key	Overall Length "A"	Length Thru Bore "B"	Hub Diameter "C"	Surface Type "D"	Mount Style	Part Number	Rating
6C	1.50-10	3.470	2.188	2.250	Ground	T	6C-12266J	D
6C	1.50-10	3.500	2.250	2.250	Polished	D	6C-4920J	D
6C	1.56-24	3.062	2.000	2.125	Polished	T	6C-61-12360	D
6C	1.56-24	3.063	2.000	2.500	Ground	T	6C—61-8120	B
6C	1.61-15	3.090	1.750	2.125	Ground	T	6C-15805J	B
6C	1.62-.43K	3.313	2.250	2.750	Turned	D	6C-3803J	D
6C	1.62-10	3.188	2.125	2.375	Polished	D	6C-9034J	D
6C	1.75-.43K	3.313	2.250	2.750	Turned	D	6C-3597J	C
6C	1.75-10	3.310	2.250	2.750	Turned	D	6C-7808J	D
6C	1.75-10	2.300	1.753	2.375	Ground	D	6C-16936	C
6C	1.75-10	2.300	1.753	2.625	Ground	D	6C-61-7730	C
6C	1.75-10	2.313	1.375	3.130	Rough	T	6C-54206J	D
6C	1.75-10	2.813	1.813	2.625	Polished	D	6C-9358J	D
6C	1.75-10	2.875	1.813	2.750	Turned	T	6C-73111208	D
6C	1.75-10	3.250	2.188	2.375	Polished	D	6C-5795J	D
6C	1.75-10	3.250	2.188	2.375	Polished	D	6C-R30UE-101	D
6C	1.75-10	3.250	2.188	2.625	Polished	T	6C-61-8230	D
6C	1.75-10	3.313	2.250	2.359	Turned	T	6C-826032900	D
6C	1.75-10	3.313	2.250	2.625	Polished	D	6C-3595J	C
6C	1.75-10	3.313	2.250	3.000	Rough	D	6C-61-6670	D
6C	1.75-10	3.500	2.250	2.625	Polished	D	6C-8753-971	B
6C	1.75-10	3.500	2.250	2.625	Turned	T	6C-61-8380	D
6C	1.75-10	4.250	2.250	2.625	Ground	D	6C-62NYS28-32	D
6C	1.75-10	4.250	3.188	3.250	Rough	D	6C-55856J-1	D
6C	1.75-13	2.875	1.945	3.250	Turned	T	6C-61-16220	D
6C	1.75-13	2.922	2.000	2.558	Ground	D	6C-28937J	D
6C	1.75-27	4.250	2.225	2.500	Ground	T	6C-29745	D
6C	1.75-27	4.250	2.250	2.500	Ground	T	6C-61-16680	A
6C	1.75-27	3.344	2.000	2.625	Polished	T	6C-28404J	D
6C	1.75-27	3.500	2.562	3.125	Rough	T	6C-28315J	C
6C	1.79-34	3.500	2.203	2.625	Ground	D	6C-61-11040	D
6C	1.87-10	3.438	2.375	2.750	Turned	T	6C-15474J	C
6C	1.96-10	3.500	2.250	3.250	Ground	D	6C-61-14400	D
6C	1.97-10	3.313	2.250	2.625	Turned	D	6C-16367J	D
6C	1.97-10	3.313	2.250	2.875	Ground	D	6C-4640J	D
6C	2.00-10	2.313	1.375	3.000	Rough	D	6C-61-9290	D
6C	2.00-10	3.156	2.125	2.625	Polished	D	6C-61-13350	D
6C	2.00-10	3.156	2.125	2.875	Turned	T	6C-61-4804	C
6C	2.00-10	3.469	2.438	3.000	Rough	T	6C-61-4020	D
6C	2.00-15	3.000	1.938	2.750	Turned	D	6C-61-4300	B



Series	Spline/Key	Overall Length "A"	Length Thru Bore "B"	Hub Diameter "C"	Surface Type "D"	Mount Style	Part Number	Rating
6C	2.00-15	3.050	2.040	2.375	Polished	T	6C-0617933B	C
6C	2.00-30	3.500	2.250	2.750	Ground	T	6C-61-7450	A
6C	2.00-38	3.469	2.125	3.000	Ground	D	6C-61-6250	B
6C	2.03-39	3.500	2.250	2.625	Ground	T	6C-61-7770	C
6C	2.12-16	3.500	2.500	2.625	Ground	T	6C-92NYS34-9	D
6C	2.37-18	2.750	1.969	3.000	Ground	T	6C-61-16230	B
6C	1.75-10	3.250	2.188	2.375	Ground	T	6C-R30UE111	A
6CM	1.96-18	2.313	1.435	3.150	Turned	T	6CM-61-14170	D
6CM	1.96-18	2.667	1.791	3.150	Ground	T	6CM-61-14180	C
6CM	1.75-10	3.480	2.230	2.560	Turned	T	6CM-61-13310	B
7C	1.220	4.438	3.250	3.500	Rough	D	7C-SFF*	C
7C	1.220	4.438	3.250	3.500	Rough	D	7C-SF*	C
7C	1.220	4.438	3.250	3.500	Rough	T	7C-SFT*	B
7C	1.220	4.438	3.250	3.500	Rough	T	7C-SFFT*	B
7C	1.34-36	3.969	2.719	4.100	Ground	T	7C-61-14830	D
7C	1.50-10	4.380	3.245	3.514	Rough	D	7C-SF-1.50-10	D
7C	1.50-38K	3.250	2.000	2.503	Polished	D	7C-3558J	D
7C	1.50-10	3.438	2.031	1.938	Turned	T	7C-61-13850	C
7C	1.50-10	3.438	2.188	2.250	Turned	D	7C-16835J	C
7C	1.50-10	3.438	2.188	2.252	Polished	T	7C-72NYS24-25A	D
7C	1.50-17	3.500	2.000	3.448	Rough	T	7C-61-7980	D
7C	1.50-37K	4.438	3.188	3.500	Rough	T	7C-61-11600	D
7C	1.62-6	3.313	2.063	2.313	Turned	D	7C-22203J	D
7C	1.63-10	3.375	2.125	2.375	Polished	D	7C-72NYS26-3	C
7C	1.66-34	3.750	2.250	2.502	Ground	T	7C-72NYS28-166A	D
7C	1.75-10	3.500	2.250	2.638	Ground	T	7C-12487J	C
7C	1.75.10	3.375	2.125	2.203	Rough	T	7C-61-5574	B
7C	1.75.10	3.500	2.250	2.188	Turned	D	7C-10508J	C
7C	1.75-10	3.500	2.250	2.188	Turned	T	7C-72NYS28-107	D
7C	1.75-10	3.500	2.250	2.625	Polished	D	7C-61-6220	B
7C	1.75-10	3.500	2.250	2.625	Turned	D	7C-5051J	C
7C	1.75-10	3.500	2.250	2.625	Ground	T	7C-26568J	D
7C	1.75-10	3.500	2.250	2.750	Turned	T	7C-61-2440	D
7C	1.75-10	3.500	2.250	3.750	Rough	D	7C-61-8120	D
7C	1.75-10	3.563	2.313	3.689	Rough	T	7C-61-12760	C
7C	1.75-10	3.563	2.313	3.125	Rough	D	7C-55857J-1	D
7C	1.75-10	3.563	2.375	2.375	Turned	T	7C-61-5630	D
7C	1.75-10	3.594	2.188	2.206	Turned	D	7C-61-12940	C
7C	1.75-10	3.688	2.188	2.625	Turned	T	7C-362180	D
7C	1.75-10	3.750	2.250	2.625	Polished	D	7C-10945J	D



Series	Spline/Key	Overall Length "A"	Length Thru Bore "B"	Hub Diameter "C"	Surface Type "D"	Mount Style	Part Number	Rating
7C	1.75-10	4.313	3.063	2.500	Polished	D	7C-61-13270	D
7C	1.75-10	4.313	3.063	2.500	Polished	D	7C-61-7790	D
7C	1.75-10	4.375	2.250	2.628	Polished	T	7C-27663J	D
7C	1.75-10	4.625	2.688	3.448	Rough	T	7C-61-7600	D
7C	1.75-13	3.500	2.000	3.860	Rough	D	7C-61-7070	D
7C	1.75-16	3.750	2.250	2.688	Turned	D	7C-12927J	D
7C	1.75-27	3.000	1.750	3.850	Rough	T	7C-61-10880	C
7C	1.75-27	3.000	1.750	2.625	Polished	T	7C-61-11880	C
7C	1.75-27	3.219	2.000	2.625	Polished	T	7C-28405J	C
7C	1.75-27	3.500	2.250	2.625	Turned	T	7C-27780J	D
7C	1.75-27	3.875	1.875	2.000	Polished	D	7C-61-8350	D
7C	1.75-34	4.688	2.250	2.500	Ground	D	7C-72NYS28-177	D
7C	1.75-6	3.625	2.250	2.500	Polished	T	7C-61-13550	D
7C	1.77-27	3.875	2.000	2.627	Ground	T	7C-61-9100	D
7C	1.79-34	3.500	2.250	2.625	Ground	T	7C-61-14530	D
7C	1.87-10	4.313	3.063	3.625	Rough	T	7C-55877J-1	D
7C	1.94-.50K2	3.906	2.656	2.875	Polished	D	7C-61-13780	D
7C	1.96-10	3.375	2.125	2.375	Ground	D	7C-61-13980	D
7C	1.96-10	3.500	2.250	2.250	Rough	T	7C-61-15300	C
7C	1.96-10	3.500	2.250	3.680	Rough	D	7C-61-9770	D
7C	1.96-10	3.500	2.250	2.625	Polished	D	7C-7530J	D
7C	1.96-10	3.500	2.250	2.625	Polished	D	7C-21033J	C
7C	1.96-10	3.500	2.250	2.628	Ground	T	7C-32135J	D
7C	1.96-10	3.500	2.875	2.938	Polished	T	7C-27296J	D
7C	1.96-10	4.688	3.000	2.438	Turned	D	7C-61-7830	D
7C	1.97-10	3.500	2.250	4.063	Rough	D	7C-61-12310	D
7C	1.98-30	3.500	2.250	2.625	Ground	T	7C-29746	C
7C	2.00-.50K	4.250	3.000	3.544	Rough	D	7C-22683J	D
7C	2.00-10	3.375	2.125	2.625	Ground	D	7C-12566J	D
7C	2.00-10	3.500	2.250	2.625	Ground	T	7C-28647J	C
7C	2.00-10	3.500	2.125	2.750	Turned	D	7C-61-14240	D
7C	2.00-10	4.250	3.000	2.937	Ground	T	7C-72NYS32-39A	D
7C	2.00-10	2.250	1.313	2.750	Rough	T	7C-72NYS32-215	C
7C	2.00-10	2.250	1.625		Rough	D	7C-54207J-1	C
7C	2.00-10	3.375	2.063	2.625	Ground	D	7C-27761J	D
7C	2.00-10	3.500	2.000	4.125	Rough	T	7C-61-4410	D
7C	2.00-10	3.500	2.250	3.000	Polished	D	7C-61-12040	D
7C	2.00-10	3.500	2.313	2.875	Ground	T	7C-61-5910	D
7C	2.00-10	3.938	2.688	3.000	Polished	T	7C-61-8810	D
7C	2.00-10	4.000	2.125	2.753	Polished	T	7C-72NYS32-110	D



Series	Spline/Key	Overall Length "A"	Length Thru Bore "B"	Hub Diameter "C"	Surface Type "D"	Mount Style	Part Number	Rating
7C	2.00-10	4.125	2.375	3.250	Turned	D	7C-61-4914	D
7C	2.00-10	4.250	3.000	3.000	Polished	T	7C-24461J	A
7C	2.00-10	4.250	3.000	3.250	Turned	D	7C-25308J	D
7C	2.00-15	3.250	2.000	3.250	Turned	T	7C-61-7480	D
7C	2.00-15	3.625	2.375	3.250	Polished	D	8C-16084J	D
7C	2.00-15	3.700	1.313	2.756	Ground	T	7C-61-8880	D
7C	2.00-30	3.500	2.125	2.625	Rough	T	7C-28309J	D
7C	2.00-31	3.375	2.125	2.625	Polished	T	7C-26420J	D
7C	2.00-38	3.500	2.125	2.752	Ground	T	7C-61-9170	D
7C	2.00-6	3.500	2.250	3.000	Polished	D	7C-61-7010	D
7C	2.00-6	3.625	2.250	3.000	Polished	T	7C-61-8870	C
7C	2.02-31	3.250	1.875	2.750	Polished	T	7C-27795J	D
7C	2.02-31	3.375	2.125	2.625	Ground	T	7C-29686J	D
7C	2.02-31	3.500	2.000	3.701	Rough	D	7C-61-7100	B
7C	2.02-31	3.500	2.250	3.705	Rough	T	7C-102-50326-01	D
7C	2.03-31	3.500	2.000	3.000	Rough	T	7C-28784J	B
7C	2.03-39	3.500	2.250	2.625	Ground	T	7C-61-14540	D
7C	2.06-20	3.386	1.969	2.625	Turned	T	7C-R93580	D
7C	2.06-20	3.406	2.094	2.516	Ground	T	7C-R91981	D
7C	2.06-20	5.710	1.969	2.628	Turned	T	7C-R97149	D
7C	2.12-15	3.938	2.688	3.000	Turned	T	7C-61-8170	D
7C	2.15-16	4.250	3.000	3.000	Ground	T	7C-27271J	C
7C	2.15-16	4.250	3.000	2.938	Polished	D	7C-7347J	D
7C	2.15-16	4.250	3.000	2.940	Ground	D	7C-7347JN	D
7C	2.21-6	4.531	3.250	3.000	Ground	T	7C-F1815	D
7C	2.25-10	4.250	3.000	3.500	Turned	D	7C-61-16420	D
7C	2.25-10	4.250	3.000	3.250	Turned	T	7C-61-7490	D
7C	2.25-10	4.250	3.000	3.500	Polished	D	7C-19466J	D
7C	2.25-10	4.250	3.000	3.500	Polished	D	7C-8627J	D
7C	2.25-10	4.250	3.000	3.500	Ground	D	7C-72NYS36-13	D
7C	2.25-10	4.313	3.063	3.625	Rough	D	7C-56847J-1	D
7C	2.25-10	4.688	3.000	3.500	Ground	T	7C-72NYS36-37	D
7C	2.25-10	4.310	3.060	3.000	Ground	D	7C-9274J	C
7C	2.34-36	3.969	2.719	3.347	Ground	T	7C-61-14920	A
7C	2.37-46	3.813	2.313	3.250	Ground	T	7C-37661	D
7C	2.37-46	4.766	2.875	3.250	Ground	T	7C-37660	A
7C	2.37-46	4.813	3.389	3.000	Ground	T	7C-61-9050	D
7C	2.37-46	5.891	2.313	3.250	Ground	T	7C-37662	A
7C	2.500	3.500	2.375	ROUGH	Rough	T	7C-SFT-2.5-3.5*	D
7C	2.50-10	4.438	3.000	2.938	Ground	T	7C-72NYS40-99	D



Series	Spline/Key	Overall Length "A"	Length Thru Bore "B"	Hub Diameter "C"	Surface Type "D"	Mount Style	Part Number	Rating
7C	2.50-10	4.750	3.000	2.936	Polished	T	7C-61-12920	D
7C	2.53-29	4.125	2.594	3.500	Turned	T	7C-61-12960	D
7CM	1.75-10	3.480	2.230	2.560	Turned	D	7CM-61-13340	B
7CM	2.75-21	4.000	2.645	3.750	Polished	T	7CM-61-15400	D
7CV	2.03-31	3.250	1.875	2.750	Ground	D	7CV-61-16320	D
8.5C	1.650	4.750	3.656	3.625	Rough	T	8.5C-SFT*	D
8.5C	2.12-41	4.250	2.692	2.938	Ground	T	8.5C-61-6920	D
8.5C	2.12-41	4.250	2.203	2.938	Ground	T	8.5C-61-6900	D
8.5C	2.15-33	3.188	2.063	3.000	Ground	T	8.5C-306472	D
8.5C	2.25-10	3.938	2.688	3.250	Turned	T	8.5C-61-13160	D
8.5C	2.33-36	4.750	3.250	3.313	Turned	T	8.5C-29786J	D
8.5C	2.33-36	4.750	3.250	3.625	Rough	T	8.5C-61-9120	D
8.5C	2.50-10	4.188	3.000	3.750	Rough	T	8.5C-61-4460	C
8.5C	2.50-19	4.125	3.016	3.500	Turned	D	8.5C-61-5150	D
8.5C	2.75-10	4.000	2.625	3.563	Turned	T	8.5C-61-13650	D
8C	1.75-10	4.047	2.250	2.750	Ground	T	8C-82NYS28-4	D
8C	1.000	6.500	5.810	3.500	Rough	D	8C-SF*	D
8C	1.530	4.875	3.875	3.778	Rough	D	8C-SF-2*	D
8C	1.530	4.875	3.875	3.640	Rough	T	8C-SFT-2*	D
8C	1.75-34	3.875	2.250	2.500	Ground	T	8C-82NYS28-36	C
8C	1.96-10	3.750	2.500	2.750	Rough	T	8C-82NYS31-28	D
8C	1.96-10	4.875	2.250	2.625	Ground	T	8C-61-15960	D
8C	1.96-6	4.875	3.625	3.188	Rough	D	8C-55808J-1	D
8C	2.00-10	2.969	1.719	2.625	Polished	D	8C-61-12350	D
8C	2.00-10	3.500	2.250	3.000	Polished	D	8C-82NYS32-9	D
8C	2.00-10	4.250	3.000	3.250	Ground	D	8C-8146J	D
8C	2.00-10	4.250	3.000	3.250	Rough	D	8C-61-11110	D
8C	2.00-10	4.625	3.000	2.766	Ground	D	8C-82NYS32-50	D
8C	2.00-6	3.500	2.625	4.000	Rough	T	8C-82NYS32-40	D
8C	2.00-6	3.500	2.250	3.000	Polished	T	8C-61-15060	D
8C	2.06-20	3.922	2.500	2.953	Ground	T	8C-R100670	D
8C	2.15-16	4.250	3.000	2.938	Ground	D	8C-82NYS34-6	D
8C	2.18-.50K	4.375	3.438	3.625	Turned	T	8C-82NYR35	D
8C	2.25-.63K	4.750	3.813	3.625	Turned	T	8C-82NYR36-4	D
8C	2.25-10	4.750	3.000	3.000	Ground	D	8C-7783J	D
8C	2.25-10	3.500	2.250	3.000	Polished	T	8C-61-11100	D
8C	2.25-10	4.000	2.750	3.375	Turned	T	8C-26095J	D
8C	2.25-10	4.250	3.000	3.501	Polished	T	8C-82NYS36-24	D
8C	2.25-10	4.500	3.000	3.000	Polished	T	8C-25935J	D
8C	2.25-10	4.500	3.000	3.500	Ground	T	8C-82NYS36-72	D



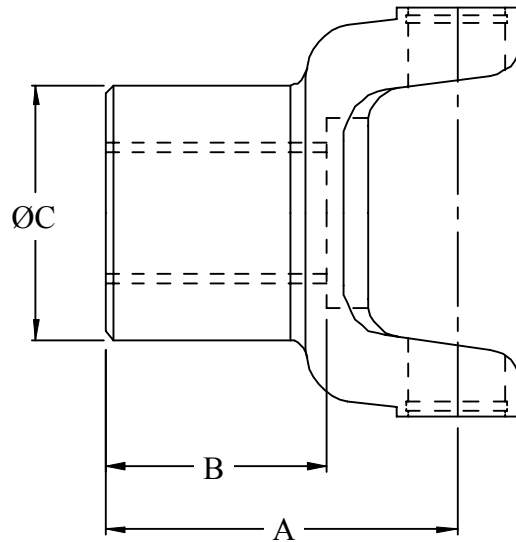
Series	Spline/Key	Overall Length "A"	Length Thru Bore "B"	Hub Diameter "C"	Surface Type "D"	Mount Style	Part Number	Rating
8C	2.25-10	4.625	3.000	3.375	Ground	T	8C-22602J	D
8C	2.25-10	4.625	3.000	3.500	Ground	D	8C-82NYS36-7	D
8C	2.25-10	4.875	3.250	3.563	Rough	T	8C-55888J	D
8C	2.25-6	4.340	3.250	3.375	Polished	D	8C-9427J	D
8C	2.25-6	4.500	3.250	2.990	Ground	D	8C-7142J	D
8C	2.37-18	4.875	3.350	3.500	Ground	T	8C-61-15570	D
8C	2.47-29	3.875	2.375	3.500	Turned	T	8C-61-3044	D
8C	2.50-10	4.250	3.000	3.750	Polished	D	8C-20440J	D
8C	2.53-19	4.593	3.125	3.188	Turned	T	8C-61-13450	D
8C	2.54-19	4.594	3.125	3.125	Polished	T	8C-19467J	D
8C	3.00-10	3.875	2.750	3.500	Turned	T	8C-82NYS48-14	D
9C	1.500	5.150	4.130	4.080	Rough	D	9C-SFF*	D
9C	1.660	5.218	4.188	3.688	Rough	D	9C-SF*	C
9C	1.660	5.218	4.188	3.688	Rough	T	9C-SFT*	B
9C	1.96-10	3.910	2.880	4.428	Rough	T	9C-61-15580	D
9C	2.25-10	4.125	3.000	3.250	Rough	D	9C-28823J	D
9C	2.25-10	4.125	3.000	3.250	Rough	T	9C-61-9350	D
9C	2.25-10	4.125	3.000	3.500	Ground	D	9C-92NYS36-48	D
9C	2.25-10	4.125	3.000	3.500	Ground	D	9C-7407J	D
9C	2.25-10	4.188	2.937	3.125	Ground	T	9C-92NYS36-60	D
9C	2.25-10	4.188	2.250	3.250	Ground	T	9C-92NYS36-38	D
9C	2.25-10	4.250	3.000	3.500	Ground	T	9C-92NYS36-27	D
9C	2.25-10	4.500	3.250	4.261	Rough	D	9C-61-7960	D
9C	2.25-10	5.188	3.625	3.000	Polished	T	9C-61-9830	D
9C	2.25-10	5.188	4.063	4.000	Polished	T	9C-55819J	D
9C	2.25-10	4.125	2.750	2.875	Ground	T	9C-92NYS39-33	C
9C	2.35-46	4.750	3.188	3.375	Ground	T	9C-61-6910	D
9C	2.37-18	4.250	3.000	3.375	Turned	T	9C-61-7970	D
9C	2.37-18	4.625	3.375	3.500	Ground	T	9C-61-7820	D
9C	2.37-46	3.987	2.625	3.250	Ground	T	9C-92NYS38-39	D
9C	2.38-46	5.000	3.250	3.375	Ground	T	9C-92NYS38-75	D
9C	2.47-29	4.125	2.875	3.250	Turned	T	9C-3034	D
9C	2.47-29	4.125	2.875	3.250	Turned	T	9C-61-11350	D
9C	2.50-10	4.188	3.063	3.500	Polished	T	9C-26714J	D
9C	2.50-10	4.188	3.063	3.750	Ground	D	9C-92NYS40-4	C
9C	2.50-10	4.250	2.406	3.500	Ground	T	9C-92NYS40-17	C
9C	2.50-10	4.750	3.031	3.750	Ground	T	9C-61-6930	D
9C	2.50-19	4.125	3.000	3.500	Ground	D	9C-61-7710	C
9C	2.50-19	4.125	3.000	3.500	Turned	D	9C-24870J	D
9C	2.50-19	5.625	4.000	3.500	Ground	T	9C-61-7340	D



Series	Spline/Key	Overall Length "A"	Length Thru Bore "B"	Hub Diameter "C"	Surface Type "D"	Mount Style	Part Number	Rating
9C	2.53-19	4.590	3.125	3.125	Ground	T	9C-21417J	D
9C	2.55-19	4.840	3.685	3.000	Turned	D	9C-61-6840	D
9C	2.68-.62K	5.210	4.188	4.000	Ground	T	9C-61-7910	D
9C	2.75-10	4.250	3.000	3.750	Ground	T	9C-61-11120	D
9C	2.75-10	4.563	3.000	3.500	Polished	D	9C-26116J	D
9C	2.75-10	4.563	3.000	3.500	Ground	T	9C-28626J	D
9C	2.75-10	4.563	3.000	3.750	Polished	T	9C-29609J	C
9C	2.77-23	4.438	3.000	4.005	Polished	D	9C-20017J	D
9C	3.00-10	3.250	2.094	4.500	Turned	T	9C-92NYS48-3	D
9C	3.07-60	4.125	2.500	4.000	Polished	T	9C-61-11510	D
9C	3.93-.75K	5.210	4.188	7.500	Turned	T	9C-61-7900	D
9C	3.93-1.00K	5.210	4.188	7.500	Turned	T	9C-61-7961	D
9C	4.18-1.00K	5.219	4.188	7.500	Turned	T	9C-61-10890	D
9C	4.50-1.00K	5.210	4.188	7.500	Turned	T	9C-61-7890	D
9C	4.68-1.25K	5.810	5.000	7.500	Turned	T	9C-3035	D



End Yokes (Round Bearing)



Style
S = Snap Ring
U = U-Bolt
HR = Half Round
BP = Bearing Plate

Series	Spline/Key	Overall Length "A"	Length Thru Bore "B"	Hub Diameter "C"	Hub Surface "D"	Mount Style	Part Number	Rating
1.5R	0.90	3.250	1.300	1.8750	Rough	S	1.5R-61-9930	D
1.5R	1.00	2.500	1.344	1.5625	Rough	S	1.5R-11884J	C
1.5R	1.00-19	3.313	1.391	1.7500	Rough	S	1.5R-24547J	C
1.5R	1.00-25K	4.000	1.500	1.5625	Rough	S	1.5R-10717J	A
1.5R	1.12	2.500	1.344	1.5625	Rough	S	1.5R-11885J	C
1.5R	1.22-.25K	2.500	1.215	1.5400	Turned	S	1.5R-11883J	D
1.5R	1.25	3.250	1.250	1.8750	Rough	S	1.5R-61-9920	C
1000	0.62-.18K	2.500		1.6250	Ground	S	10-4-373	D
1000	0.75	2.500	1.125	1.6250	Ground	S	10-4-22	D
1000	0.75-.18K	2.500		1.6250	Ground	S	10-4-13	D
1000	0.75-.18K	2.500	1.125	1.6250	Turned	S	10-4-133	C
1000	0.75-.25K	2.500	1.250	1.6250	Ground	S	10-4-23	D
1000	0.87-13	2.500	1.000	1.6250	Turned	S	10-4-481	C
1000	0.87-13	3.813	1.875	1.5000	Turned	S	10-4-641	D
1000	1.00	2.500	1.125	2.0000	Ground	S	10-4-52	D
1000	1.00-.25K	2.500	1.125	2.0000	Ground	S	10-4-93	C
1000	1.00-6	2.500	1.000	1.6250	Turned	S	10-4-101	D
1000	1.12	2.500	1.125	2.0000	Ground	S	10-4-32	D
1000	1.12-.25K	2.500		2.0000	Ground	S	10-4-103	C
1000	1.25-.25K	2.500	1.125	2.0000	Ground	S	10-4-183	D
1000	1.25-.31K	2.500	1.125	2.0000	Ground	S	10-4-123	C
1000	1.25-.31K	2.500	1.125	2.0000	Ground	S	10-4-193	D
1000	1.25-.31K	3.000	1.800	2.0000	Rough	S	100N-61-8270	D
1000	1.37-.37K	2.500	1.125	2.2500	Ground	S	10-4-213	D



Series	Spline/Key	Overall Length "A"	Length Thru Bore "B"	Hub Diameter "C"	Hub Surface "D"	Mount Style	Part Number	Rating
1000	1.43-.18K	2.500		2.2500	Ground	S	10-4-383	D
1100	0.75-.18K	2.250		1.6875	Turned	S	1-4-783	D
1100	0.87-.18K	2.250		2.0000	Ground	S	1-4-803	C
1100	0.87-.25K	2.250		2.0000	Ground	S	1-4-1293	D
1100	1.00-.25K	2.250		2.0000	Ground	S	1-4-823	D
1100	1.25-.31K	2.250		2.0000	Turned	S	1-4-933	D
1310	0.75	2.563	1.625	2.1250	Ground	S	2-4-177	B
1310	1.75-.18K	2.563	1.625	2.1250	Ground	S	2-4-433	D
1310	0.87-.18K	2.563	1.625	2.1250	Ground	S	2-4-453	C
1310	0.87-.25K	2.563	1.625	2.1250	Ground	S	2-4-583	D
1310	0.87-13	2.563	1.563	2.0000	Ground	S	2-4-3331	A
1310	1.00-.25K	2.563	1.625	2.1250	Ground	S	2-4-473	A
1310	1.00-15	2.313	1.062	2.0000	Ground	S	2-4-4921	D
1310	1.09	2.563	1.625	2.0625	Turned	S	131N-61-9980	D
1310	1.12-.25K	2.563	1.625	2.1250	Ground	S	2-4-503	A
1310	1.12-.25K	3.000	1.500	1.7500	Turned	S	131N-61-3	D
1310	1.12-.31K	2.562	1.625	2.1250	Turned	S	2-4-523	D
1310	1.12-.31K	3.000	1.500	1.7500	Ground	U	2-4-154	D
1310	1.14-26	3.000	1.500	1.5625	Ground	HR	2-4-8091-1X	D
1310	1.14-26	3.000	1.500	1.5625	Ground	U	2-4-8091X	D
1310	1.25-.25K	2.563	1.625	2.1250	Turned	S	131N-61-13481	D
1310	1.25-.25K	2.563	1.625	2.1250	Ground	S	2-4-573	D
1310	1.25-.25K	2.938	1.500	2.1250	Turned	S	131N-61-2	D
1310	1.25-.31K	2.563	1.625	2.1250	Ground	S	2-4-533	A
1310	1.25-.31K	2.563	1.625	2.1250	Ground	S	2-4-613	D
1310	1.25-.31K	2.563	1.625	2.1250	Turned	S	131N-61-1	D
1310	1.25-.31K	2.938	1.500	2.1250	Ground	U	2-4-783	B
1310	1.25-.31K	2.938	1.500	2.1250	Turned	U	2-4-64	D
1310	1.25-10	2.938	1.500	1.8750	Ground	U	2-4-1991X	D
1310	1.25-10	2.938	1.500	1.8750	Ground	U	2-4-2611X	D
1310	1.25-10	3.281	1.750	2.0000	Ground	U	2-4-2901	D
1310	1.26-14	2.563	1.500	2.0000	Ground	S	2-4-1741	D
1310	1.26-29	2.938	1.500	1.8750	Ground	U	2-4-3801X	B
1310	1.27-19	2.500	1.563	2.0000	Turned	S	XD-132913	B
1310	1.37-.31K	2.563	1.625	2.0000	Ground	S	2-4-1103	B
1310	1.37-.37K	2.563	1.625	2.0000	Ground	S	2-4-803	B
1310	1.37-.37K	2.594	1.125	2.1250	Ground	U	2-4-1053	B
1310	1.37-.37K	3.438	2.000	2.2500	Ground	U	2-4-834	D
1310	1.37-10	2.938	1.500	1.7188	Ground	U	2-4-411	B
1310	1.37-10	3.219	1.750	2.0625	Ground	U	2-4-2671	B



Series	Spline/Key	Overall Length "A"	Length Thru Bore "B"	Hub Diameter "C"	Hub Surface "D"	Mount Style	Part Number	Rating
1310	1.37-10	3.438	2.000	2.0000	Ground	U	2-4-2371	D
1310	1.37-10	3.438	2.000	2.1250	Ground	U	2-4-2401	D
1310	1.41-32	3.438	2.000	2.1250	Ground	U	2-4-4191	D
1310	1.50-.37K	2.563	1.625	2.1250	Ground	S	2-4-1233	C
1310	1.50-17	3.281	1.750	2.0000	Ground	U	131N-61-13600	D
1310	1.68-.37K	2.563	1.625	1.7500	Rough	S	131N-61-9450	D
1330	1.21-28	4.750	2.844	1.5000	Ground	U	133N-61-12180	A
1330	1.34-31	3.688	2.000	1.8750	Ground	U	133N-61-11380	D
1330	1.37-10	3.438	2.000	2.1250	Ground	U	2-4-2561X	D
1330	1.39-32	3.438	2.000	1.8750	Ground	U	133N-61-11390	D
1330	1.39-32	3.688	2.000	1.8750	Ground	U	133N-61-11630	D
1330	1.39-32	3.875	2.000	1.8750	Ground	U	133N-61-11900	D
1330	1.40-31	1.109	2.391	1.8750	Ground	U	133N-61-12680	D
1330	1.40-31	4.250	2.390	1.8750	Ground	U	133N-61-12770	D
1330	1.40-32	3.438	2.000	2.1250	Ground	U	2-4-5521	D
1350	0.75	3.125	1.625	2.6090	Rough	S	3-4-157	D
1350	1.12-.25K	2.688	1.812	2.0000	Turned	S	3-4-43	D
1350	1.14-26	3.000	1.500	1.5310	Ground	U	3-4-5761X	D
1350	1.25-.31K	2.688	1.813	2.0000	Ground	S	3-4-93	D
1350	1.25-.31K	2.750	1.875	2.0000	Ground	S	3-4-53	D
1350	1.25-.31K	3.000	1.500	2.2500	Ground	U	3-4-283	D
1350	1.25-.31K	3.000	2.125	2.0625	Ground	S	3-4-103	D
1350	1.25-10	3.500	2.000	1.7500	Ground	U	3-4-3761	D
1350	1.28-14	2.688	3.500	2.0000	Ground	S	3-4-7401	C
1350	1.28-14	2.688	1.438	2.0000	Ground	S	3-4-5391X	D
1350	1.28-29	3.000	1.500	1.8750	Ground	U	3-4-5731X	D
1350	1.37-.31K	2.750	1.875	2.0625	Turned	S	135N-61-1	D
1350	1.37-.37K	3.531	2.000	2.2500	Turned	U	3-4-24	D
1350	1.37-10	3.281	1.781	1.7190	Ground	U	3-4-178X	A
1350	1.37-10	3.313	1.813	1.7500	Ground	U	3-4-1111	D
1350	1.37-10	3.500	2.000	1.7190	Ground	U	3-4-1261	D
1350	1.37-10	3.500	2.000	2.0000	Ground	U	3-4-1211	D
1350	1.37-10	3.688	2.000	2.1250	Ground	U	3-4-3291	D
1350	1.50-.37K	3.531	2.063	2.3750	Ground	U	3-4-333	D
1350	1.50-.37K	3.531	2.000	2.2500	Turned	U	3-4-84	D
1350	1.50-10	3.094	2.063	2.5000	Ground	U	3-4-1501	C
1350	1.50-10	3.875	2.188	2.2500	Ground	U	3-4-3671X	D
1350	1.50-10	3.875	2.188	2.2500	Ground	U	3-4-2231	C
1410	1.75-10	4.000	2.188	2.3750	Ground	U	3-4-2351	D
1410	1.25-.25K	3.688	2.000	2.2500	Ground	U	3-4-163	D



Series	Spline/Key	Overall Length "A"	Length Thru Bore "B"	Hub Diameter "C"	Hub Surface "D"	Mount Style	Part Number	Rating
1410	1.25-.31K	3.688	2.000	2.2500	Turned	U	3-4-1763	D
1410	1.25-.31K	3.688	2.000	2.2500	Ground	U	3-4-343	D
1410	1.25-10	3.188	1.500	1.8750	Ground	U	3-4-4451X	D
1410	1.27-14	1.031	2.125	2.2500	Ground	U	3-4-9551	D
1410	1.27-14	4.031	2.250	2.3750	Ground	U	3-4-7721	D
1410	1.28-29	3.188	1.500	1.8750	Ground	U	3-4-5711X	D
1410	1.37-.37K	3.688	2.000	2.2500	Ground	U	3-4-154	D
1410	1.37-10	3.469	1.781	1.7190	Ground	U	3-4-2851X	D
1410	1.37-10	3.500	1.750	2.1250	Ground	U	3-4-3941	D
1410	1.37-10	3.625	2.000	2.1250	Ground	U	3-4-2271	D
1410	1.37-10	3.688	2.000	1.9375	Ground	U	3-4-1481	D
1410	1.50	4.000		2.6875	Turned	U	3-4-223	D
1410	1.50-.37K	4.000	2.250	2.6875	Ground	U	3-4-263	D
1410	1.50-10	3.688	2.000	1.9375	Ground	U	3-4-7321X	C
1410	1.50-10	3.688	2.000	2.3125	Turned	U	3-4-2261	D
1410	1.50-10	3.719	2.000	1.8125	Turned	U	3-4-6631X	A
1410	1.50-10	3.875	2.188	2.5000	Ground	U	3-4-2241	D
1410	1.50-10	5.750	1.938	2.5000	Ground	U	141N-61-12830	D
1410	1.62-10	3.813	1.750	2.3760	Polished	U	141N-61-8890	C
1410	1.62-10	3.938	2.125	2.3750	Ground	U	3-4-3491	D
1410	1.62-10	4.188	2.125	2.3750	Ground	U	3-4-5921X	C
1410	1.62-10	4.188	2.125	2.3750	Ground	U	3-4-2131	D
1410	1.75-.43K	4.250	2.500	2.7500	Ground	U	3-4-273	D
1410	1.75-10	4.000	2.188	2.6250	Ground	U	3-4-5881X	D
1410	1.75-10	4.000	2.188	2.6250	Ground	U	3-4-3041	C
1410	1.75-10	4.063	2.250	2.5000	Ground	U	3-4-5741X	C
1410	1.75-10	4.188	2.188	2.2500	Ground	U	3-4-3351	D
1410	1.75-10	4.188	2.188	2.3750	Ground	U	3-4-1841	D
1410	1.75-10	4.250	2.188	2.6250	Ground	U	3-4-2511	D
1410	1.96-10	4.125	2.063	2.6250	Ground	U	3-4-2391	D
1410	1.50-10	4.500	2.938	2.3100	Ground	S	141N-61-9160	A
1410	1.77-37	4.980	3.250	2.1250	Ground	S	141N-61-9080	D
1480	1.37-10	3.969	1.969	1.8750	Polished	HR	148N-61-11500	C
1480	1.37-10	4.031	2.000	1.8750	Polished	U	148N-61-1	D
1480	1.37-10	4.031	2.000	2.1250	Ground	U	3-4-6701	D
1480	1.40-26	3.375	1.469	1.9688	Ground	HR	61-5480	D
1480	1.50-10	4.031	2.000	2.0625	Ground	U	3-4-3331X	D
1480	1.50-10	4.031	2.000	2.3125	Ground	U	3-4-4421X	C
1480	1.50-10	4.219	2.000	2.1250	Ground	U	3-4-3111	D
1480	1.50-10	4.250	2.188	2.1250	Ground	U	3-4-3711	D



Series	Spline/Key	Overall Length "A"	Length Thru Bore "B"	Hub Diameter "C"	Hub Surface "D"	Mount Style	Part Number	Rating
1480	1.50-10	4.250	2.188	2.2500	Ground	U	3-4-6221X	D
1480	1.52-23	3.859	1.625	1.8750	Polished	HR	61-5470	D
1480	1.52-23	3.859	1.969	1.8750	Polished	HR	61-5460	D
1480	1.56-24	3.969	2.000	2.1250	Polished	HR	148N-61-12510	D
1480	1.62-10	4.188	2.125	2.3750	Ground	U	3-4-5781X	D
1480	1.75-10	3.969	1.938	2.6250	Ground	U	3-4-4051	D
1480	1.75-10	4.219	2.188	2.3750	Ground	U	3-4-3571	D
1480	1.75-10	4.219	2.188	2.3750	Ground	U	3-4-3191	D
1480	1.75-10	4.281	2.188	2.6250	Ground	U	3-4-5811X	C
1480	1.75-10	4.469	2.250	2.6250	Ground	U	3-4-3121	D
1480	1.79-34	5.563	2.750	2.5625	Ground	U	3-4-7261X	D
1480	1.87-10	4.406	2.375	2.7500	Ground	U	3-4-6671X	C
1480	1.88-10	4.063	2.000	2.7500	Turned	U	148N-61-11140	C
1480	1.97-10	4.406	2.250	2.6250	Ground	U	3-4-3861	D
1550	1.50-10	3.781	2.000	1.9375	Turned	U	4-4-2051	D
1550	1.50-10	3.781	2.000	2.0625	Turned	U	4-4-2031	D
1550	1.50-10	3.813	2.000	2.1875	Ground	U	4-4-4211	D
1550	1.63-10	3.938	2.125	2.3750	Ground	U	4-4-1921	D
1550	1.75-10	4.000	2.188	2.3750	Ground	BS	4-4-2041-1	B
1550	1.75-10	4.125	1.938	2.5000	Ground	HR	4-4-4781-1	D
1550	1.75-10	4.156	2.250	2.5000	Ground	U	4-4-2511	D
1550	1.75-10	4.656	2.250	2.6250	Ground	U	4-4-3581X	D
1550	1.75-10	4.656	2.250	2.7500	Ground	U	4-4-1981	D
1550	1.75-10	4.672	2.234	2.6250	Ground	U	4-4-1901	D
1550	1.75-10	5.500	2.188	2.2500	Ground	U	4-4-3641	D
1550	1.75-13	4.031	2.250	2.3750	Ground	U	4-4-2931	D
1550	1.78-34	5.125	2.750	2.5625	Ground	U	4-4-3861X	D
1550	1.87-10	4.406	2.000	2.7500	Ground	HR	GKN41804	D
1550	1.87-10	4.406	2.375	2.7500	Ground	U	4-4-1941	D
1550	1.87-10	4.438	2.000	2.7500	Ground	U	GKN40896	D
1550	1.96-10	4.281	2.250	2.6250	Ground	U	4-4-2431	D
1550	1.96-10	4.656	2.625	2.7500	Ground	U	4-4-2421	D
1550	2.00-10	4.594	2.562	2.9380	Ground	U	4-4-2441	D
1550	2.00-10	4.906	3.000	2.7500	Ground	U	4-4-2941	D
1550	2.00-31	4.188	2.500	2.6250	Ground	U	4-4-4411	D
1550	2.00-38	4.047	2.125	2.7500	Ground	U	4-4-4191	D
1550	2.37-46	4.875	3.250	3.1250	Ground	S	155N-61-12410	D
1550	1.75-10	4.000	1.878	2.3620	Ground	BS	155N-61-16740	B
1550	1.77-34	4.440	2.000	2.5000	Turned	HR	155N-61-16370	D
1610	1.62-10	4.125	2.125	2.3750	Ground	BP	16N-4-2401	D



Series	Spline/Key	Overall Length "A"	Length Thru Bore "B"	Hub Diameter "C"	Hub Surface "D"	Mount Style	Part Number	Rating
1610	1.75	5.625	3.000	2.7660	Ground	BP	16N-4-413	D
1610	1.75-10	4.125	2.250	2.1880	Turned	BP	16N-4-1721	D
1610	1.75-10	4.125	2.250	2.5000	Ground	BP	16N-4-1051	D
1610	1.75-10	4.750	2.250	2.6250	Ground	BP	16N-4-5111X	D
1610	1.75-10	5.000	2.250	2.7500	Ground	BP	16N-4-3621	D
1610	1.78-34	5.313	2.750	2.5625	Ground	BP	16N-4-4841X	D
1610	1.96-10	4.719	2.250	2.6250	Ground	BP	16N-4-5121X	D
1610	1.96-10	5.375	2.250	3.0000	Ground	BP	16N-4-4541	D
1610	1.97-10	5.313	2.250	2.6250	Ground	BP	16N-4-4471	D
1610	1.97-10	5.313	2.250	2.6250	Ground	HR	16N-4-8851-1	A
1610	2.00-10	5.000	3.000	2.9375	Ground	BP	16N-4-1221	D
1610	2.00-10	5.469	3.000	2.7500	Ground	BP	16N-4-1661	D
1610	2.00-10	5.625	3.000	2.9375	Ground	BP	16N-4-1391	D
1610	2.14-41	2.250	2.500	2.9375	Ground	HR	16N-4-7311-1X	D
1610	2.21-6	5.719	3.250	3.0000	Ground	BP	16N-4-4751X	D
1610	2.25	5.625	3.000	3.3437	Ground	BP	16N-4-453	D
1610	2.25-10	5.625	3.000	3.0000	Ground	BP	16N-4-6891X	D
1610	2.39-46	6.125	3.375	3.5000	Ground	BP	16N-4-4861	D
1610	2.50-.63K	5.625	3.000	3.3438	Ground	BP	16N-4-453M	D
1650	2.00-15	5.406	3.250	3.0000	Ground	HR	16N-4-4701	D
1710	1.75-10	4.750	2.250	2.6250	Ground	BP	16N-4-2081	D
1710	1.75-10	4.500	2.250	2.6250	Ground	BP	17N-4-5581X	D
1710	1.75-10	5.250	2.250	2.6250	Ground	BP	17N-4-4301X	D
1710	1.76-34	5.969	2.250	2.5000	Ground	BP	17N-4-6321	C
1710	1.78-34	7.188	2.750	2.5625	Ground	BP	17N-4-5041X	A
1710	1.96-10	5.000	3.000	2.4375	Turned	BP	17N-4-1981	D
1710	1.96-10	5.250	2.250	2.6250	Ground	BP	17N-4-5151X	D
1710	2.00-10	5.188	2.563	2.7500	Ground	BP	17N-4-4391X	D
1710	2.00-10	5.188	2.563	2.9375	Ground	BP	17N-4-3241	D
1710	2.00-10	5.625	3.000	2.9380	Ground	BP	17N-4-2191	D
1710	2.00-10	5.625	3.000	3.2500	Ground	BP	17N-4-2001	D
1710	2.00-15	5.000	2.125	3.2550	Polished	BP	R9184-95	D
1710	2.00-15	5.375	2.500	2.8750	Ground	BP	17N-4-3001	D
1710	2.01-39	6.500	2.438	2.7500	Ground	BP	17N-4-6871X	D
1710	2.02-39	5.156	2.327	3.0000	Ground	BP	17N-4-6401	D
1710	2.02-39	5.250	2.438	2.7500	Ground	BP	17N-4-6951X	D
1710	2.21-6	5.313	3.250	3.0000	Ground	BP	17N-4-3031	D
1710	2.21-6	5.313	3.250	3.0000	Ground	BP	17N-4-3041X	D
1710	2.22-6	5.625	3.250	3.0000	Ground	BP	17N-4-4341	D
1710	2.25-10	5.250	2.250	3.1250	Ground	BP	17N-4-2441	D



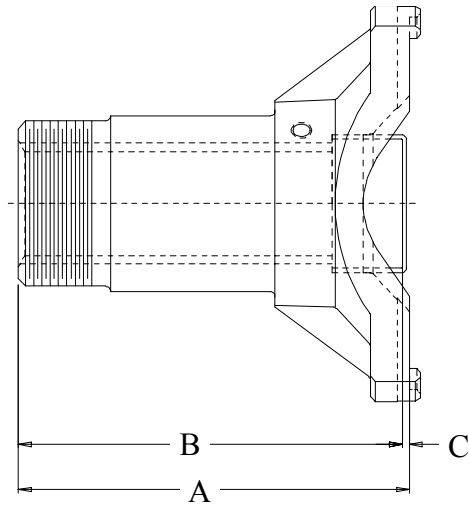
Series	Spline/Key	Overall Length "A"	Length Thru Bore "B"	Hub Diameter "C"	Hub Surface "D"	Mount Style	Part Number	Rating
1710	2.25-10	5.250	2.250	3.2500	Ground	BP	17N-4-1971	D
1710	2.25-10	5.250	3.000	3.5000	Ground	BP	17N-4-2141	D
1710	2.25-10	6.063	3.000	3.0000	Ground	BP	17N-4-4411X	D
1710	2.34-16	4.938	2.750	2.8750	Ground	BP	17N-4-4601	D
1710	2.35-18	5.750	3.375	3.5000	Ground	BP	17N-4-4561	D
1710	2.36-18	5.281	2.750	3.0000	Ground	BP	17N-4-5831	D
1710	2.37-46	5.688	2.625	3.2500	Ground	BP	17N-4-5461X	D
1710	2.37-46	5.938	2.875	3.2500	Ground	HR	17N-4-6961-1X	D
1710	2.39-46	4.938	2.750	2.8750	Ground	HR	17N-4-7481-1	D
1710	2.39-46	5.750	3.375	3.5000	Ground	BP	17N-4-4771	D
1710	2.50-10	5.156	2.406	3.5000	Ground	BP	17N-4-4421	C
1710	2.53-16SP	6.063	3.250	3.2500	Polished	BP	3897-P-2356	D
1710	2.75-10	5.750	3.000	3.5000	Ground	BP	17N-4-4551	D
1710	2.75-10	5.750	3.000	3.7500	Ground	BP	17N-4-6931X	D
1760	2.00-10	5.375	2.563	2.9375	Ground	BP	176N-4-181X	D
1760	2.15-16	5.813	3.000	2.9375	Ground	BP	176N-4-251X	D
1760	2.34-16	5.500	2.750	2.8750	Ground	BP	176N-4-161	D
1760	2.35-18	6.125	3.375	3.5000	Ground	BP	176N-4-271	D
1760	2.39-46	6.000	3.375	3.5000	Ground	BP	176N-4-381	D
1810	2.00-10	5.375	2.563	2.9375	Ground	BP	18N-4-1921	D
1810	2.25-10	5.844	3.000	3.0000	Ground	BP	18N-4-1911	D
1810	2.25-10	5.844	3.000	3.5000	Ground	BP	18N-4-2021	D
1810	2.26-44	5.250	2.500	2.9375	Ground	BP	18N-4-3281X	D
1810	2.34-16	5.500	2.750	2.8750	Turned	BP	18N-4-1891	C
1810	2.34-16	5.500	2.750	2.8750	Turned	BP	18N-4-2531X	D
1810	2.35-18	6.125	3.375	3.5000	Ground	BP	18N-4-2581	D
1810	2.37-46	5.438	2.625	3.2500	Ground	BP	18N-4-2701	D
1810	2.37-46	5.438	2.625	3.2500	Ground	BP	18N-4-2711X	D
1810	2.37-46	5.688	2.875	3.2500	Ground	BP	18N-4-3201	D
1810	2.39-46	6.156	3.375	3.5000	Ground	BP	18N-4-2541	D
1810	2.50-10	5.781	3.000	3.2500	Ground	BP	18N-4-2561	D
1810	2.50-10	5.875	3.000	3.7500	Ground	BP	18N-4-3551X	D
1810	2.75-10	6.062	3.000	3.5000	Ground	BP	18N-4-2931X	D
1810	3.00-23	5.750	3.000	4.0000	Ground	BP	18N-4-2631X	D
1810	2.75-10	6.062	3.000	3.5000	Ground	BP	18N-4-1901	D
1880	2.75-10	6.000	3.000	3.5000	Ground	BP	185N-4-491	D
2R	1.25-.25K	3.688		2.3750	Rough	S	2R-11198J-8	D
2R	1.31-20	3.750	2.000	2.2500	Rough	S	2R-24645J	D
2R	1.33-15	3.750	2.000	2.2500	Rough	S	2R-22278J	B
2R	1.75	3.250	1.500	2.3750	Rough	S	2R-12284J	D



Series	Spline/Key	Overall Length "A"	Length Thru Bore "B"	Hub Diameter "C"	Hub Surface "D"	Mount Style	Part Number	Rating
L16N	1.00B	4.188	2.130	2.3750	Rough	S	L16N-21103	B
L16N	1.18SQ	3.000	1.185	2.5000	Rough	S	L16SYQ19	D
L16N	1.18SQ	4.060	1.750	2.3750	Rough	S	L16SYQ19-63	D
L16N	1.25-14	2.500	1.720	1.8750	Turned	S	L16N-3NY20-13	B
L16N	1.25-14	4.000	2.944	2.0000	Turned	S	L16NYS20-9	D
L16N	1.28-14	3.625	2.579	2.3750	Turned	S	L16NYS20-24	D
L16N	1.33-.19K	4.125	1.500	2.0000	Rough	S	L16N-61-11670	C
L16N	1.37-.37K	4.625	2.000	2.4375	Rough	S	L16SYT22-1	D
L16N	1.38-6	4.565	2.250		Rough	S	L16SYS22-215A	D
L16N	1.50-.57K	4.188		2.5000	Rough	S	L16N-22-1154	D



Slip Yokes (Wing Bearing)



Style
T = Threaded
D = Drilled

Series	Spline	Overall Length "A"	Length Thru Hole "B"	Cup to Face Length "C"	Mount Style	Part Number	Rating
2C	1.25-10	2.25	2.19	0.062	D	2C-66-1240-1	B
2C	1.18-15	4.44	4.06	0.375	D	2C-6-2041	C
2C	1.18-16	1.81	1.69	0.125	D	2C-6-2002	D
3C	1.25-16	2.63	2.56	0.062	D	3C-6-3033	C
3C	1.25-10	4.28	4.06	0.218	D	3C-6-3000	C
4C	1.37-16	4.75	3.81	0.937	D	4C-66-12220	D
4C	1.37-16	4.75	3.81	0.937	T	4C-66-14160	D
4C	1.37-10	4.75	3.81	0.937	T	4C-6-4041	D
4C	1.37-16	3.75	3.06	0.687	D	4C-6-4079	D
4C	1.37-16	5.63	5.00	0.625	D	4C-6-4090	D
4C	1.37-16	5.63	5.00	0.625	T	4C-6-4095	D
4C	1.37-10	3.19	2.91	0.282	D	4C-6-4011	B
4C	1.37-10	3.27	3.00	0.270	D	4C-66-8860	D
4C	1.37-10	4.75	4.48	0.266	D	4C-6-4000	B
5C	1.56-16	3.63	3.00	0.625	D	5C-6-5122	D
5C	1.56-16	4.66	4.28	0.375	D	5C-66-5660	C
5C	1.56-16	5.38	5.00	0.375	D	5C-66-5119SP	B
5C	1.56-16	5.63	5.00	0.625	D	5C-6-5119	D
5C	1.56-16	3.25	2.88	0.375	T	5C-66-9140	D
5C	1.56-16	3.63	3.00	0.625	T	5C-6-5120	D
5C	1.56-16	3.94	3.56	0.375	T	5C-66-12720	D
5C	1.56-16	4.38	4.00	0.375	T	5C-66-13670	C
5C	1.56-16	5.09	4.72	0.376	T	5C-66-13260	C
5C	1.56-16	5.38	5.00	0.375	T	5C-66-5118SP	A



Series	Spline	Overall Length "A"	Length Thru Hole "B"	Cup to Face Length "C"	Mount Style	Part Number	Rating
5C	1.56-16	5.63	5.00	0.625	T	5C-6-5118	B
5C	1.50-10	3.25	2.88	0.375	D	5C-66-7140	C
5C	1.50-10	3.63	3.25	0.375	D	5C-6-5009	B
5C	1.50-10	5.38	5.00	0.375	D	5C-66-5010	D
5C	1.50-10	5.38	5.00	0.375	D	5C-66-7470	D
5C	1.50-10	5.38	5.00	0.375	D	5C-6-5000	A
5C	1.50-10	6.63	6.06	0.562	D	5C-6-5007	D
5C	1.50-10	5.06	3.99	1.070	D	5C-66-14650	C
5C	1.50-10	3.25	2.88	0.375	T	5C-66-2550	D
5C	1.50-10	5.38	5.00	0.375	T	5C-6-5036	D
5C	1.50-10	5.38	5.00	0.375	T	5C-6-5106	D
6C	1.75-16	4.00	3.31	0.687	D	6C-6-6129	D
6C	1.75-16	4.00	3.63	0.375	D	6C-6-6097	D
6C	1.75-16	4.44	4.13	0.313	D	6C-66-5230	D
6C	1.75-16	5.25	4.38	0.875	D	6C-66-8690	B
6C	1.75-16	5.63	4.75	0.875	D	6C-6-6164	D
6C	1.75-16	5.63	5.25	0.375	D	6C-6-6151	D
6C	1.75-16	6.13	5.25	0.875	D	6C-6-6160	B
6C	1.75-16	6.13	5.25	0.875	D	6C-66-8710	B
6C	1.75-16	9.50	8.00	1.500	D	6C-6-6047	B
6C	1.75-16	3.75	2.63	1.125	D	6C-66-14640	C
6C	1.75-16	4.13	3.25	0.875	T	6C-6-6176	D
6C	1.75-16	5.63	5.25	0.375	T	6C-6-6140	D
6C	1.75-16	6.13	5.25	0.875	T	6C-6-6163	B
6C	1.75-16	8.88	8.00	0.875	T	6C-6-6177	D
6C	1.75-16	9.50	8.00	1.500	T	6C-6-6180	B
6C	1.75-16	3.12	1.87	1.255	T	6C-6-6173	D
6C	1.75-16	3.51	2.26	1.250	T	6C-66-14600	D
6C	1.75-16	9.50	7.12	2.380	T	6C-66-16210	C
6C	1.75-16	7.38	5.50	1.880	T	6C-6-6161	C
6C	1.75-10	3.25	2.88	0.375	D	6C-6-6049	D
6C	1.75-10	3.75	3.38	0.375	D	6C-6-6010	B
6C	1.75-10	4.13	3.75	0.375	D	6C-6-6078	B
6C	1.75-10	4.88	4.56	0.312	D	6C-66-13470	D
6C	1.75-10	5.63	4.75	0.875	D	6C-66-2280	D
6C	1.75-10	5.63	5.00	0.625	D	6C-8050725	C
6C	1.75-10	5.63	5.25	0.375	D	6C-6-6000	A
6C	1.75-10	5.63	5.25	0.375	D	6C-6-6000S	C
6C	1.75-10	7.38	6.81	0.562	D	6C-6-6007	D
6C	1.75-10	5.63	4.31	1.315	D	6C-66-16660	C



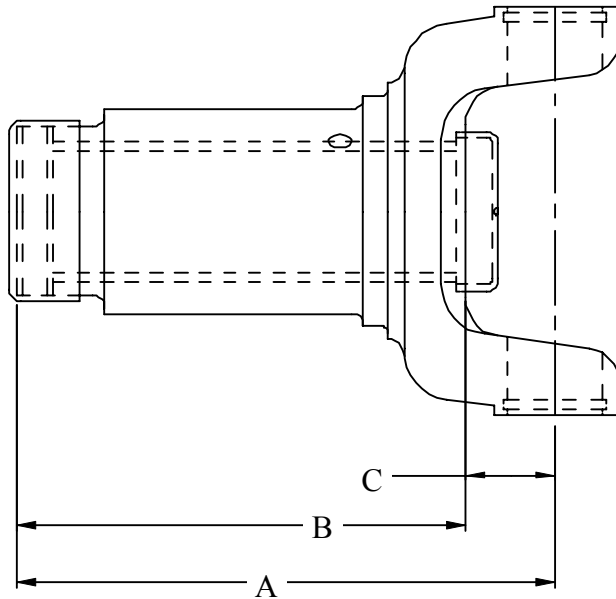
Series	Spline	Overall Length "A"	Length Thru Hole "B"	Cup to Face Length "C"	Mount Style	Part Number	Rating
6C	1.75-10	4.13	3.75	0.375	T	6C-66-12820	D
6C	1.75-10	5.63	5.25	0.375	T	6C-6-6136	A
7C	2.50-16	3.88	3.56	0.312	T	7C-72NLS40-7DC	D
7C	2.00-16	10.25	8.63	1.625	D	7C-66-9850	D
7C	2.00-16	10.88	9.25	1.625	D	7C-66-12550	D
7C	2.00-16	9.00	7.38	1.625	D	7C-66-15440	D
7C	2.00-16	10.88	9.25	1.625	D	7C-72NLS32-20	A
7C	2.00-16	10.94	9.38	1.563	D	7C-72NLS32-129	D
7C	2.00-16	4.50	3.50	1.000	D	7C-66-10870	B
7C	2.00-16	4.72	4.16	0.562	D	7C-66-13560	D
7C	2.00-16	5.00	4.44	0.562	D	7C-6-7141	B
7C	2.00-16	5.13	4.50	0.625	T	7C-6-7180	B
7C	2.00-16	5.31	4.77	0.547	D	7C-72NLS32-4DC	D
7C	2.00-16	7.13	5.75	1.375	D	7C-66-9890	B
7C	2.00-16	7.13	6.50	0.625	D	7C-6-7179	A
7C	2.00-16	7.12	5.75	1.370	D	7C-66-14810	D
7C	2.00-16	7.06	5.75	1.310	D	7C-66-8330	D
7C	2.00-16	7.13	5.75	1.375	T	7C-66-15030	A
7C	2.00-16	5.13	3.75	1.375	T	7C-66-15110	A
7C	2.00-16	10.88	9.50	1.375	T	7C-6-7099	C
7C	2.00-16	4.25	3.67	0.578	T	7C-66-13940	D
7C	2.00-16	4.50	3.50	1.000	T	7C-66-8280	B
7C	2.00-16	5.88	5.25	0.625	T	7C-6-7175	D
7C	2.00-16	7.13	5.75	1.375	T	7C-66-9060	C
7C	2.00-16	7.13	6.50	0.625	T	7C-6-7177	A
7C	2.00-16	9.69	8.31	1.375	T	7C-66-8840	C
7C	2.00-15	4.00	2.75	1.250	T	7C-66-14500	D
7C	2.00-10	4.19	3.19	1.000	D	7C-66-6290	C
7C	2.00-10	4.50	3.97	0.531	D	7C-66-8870	C
7C	2.00-10	4.94	4.31	0.625	D	7C-72NLS32-13DC	D
7C	2.00-10	5.13	4.56	0.562	D	7C-6-7005	B
7C	2.00-10	5.88	5.31	0.562	D	7C-6-7004	D
7C	2.00-10	7.06	6.50	0.563	D	7C-6-7000	A
7C	2.00-10	7.06	6.50	0.563	D	7C-66-6240	D
7C	2.00-10	7.13	5.75	1.375	D	7C-66-13810	D
7C	2.00-10	8.56	8.00	0.563	D	7C-72NLS32-27DC	D
7C	2.00-10	9.13	7.75	1.375	D	7C-6-7075	D
7C	2.00-10	3.56	3.00	0.563	T	7C-37144	C
7C	2.00-10	4.31	3.75	0.563	T	7C-66-12800	D
7C	2.00-10	5.31	4.77	0.547	T	7C-72NLS40-8DC	D



Series	Spline	Overall Length "A"	Length Thru Hole "B"	Cup to Face Length "C"	Mount Style	Part Number	Rating
7C	2.00-10	7.06	6.50	0.563	T	7C-6-7029	B
7C	2.00-10	9.13	7.75	1.375	T	7C-6-7080	D
7C	1.75-13	4.00	2.75	1.250	T	7C-61-9810	D
7C	1.75-10	6.72	6.16	0.563	D	7C-66-11030	D
8.5C	2.50-16	5.94	5.69	0.250	T	8.5C-66-8150	D
8.5C	2.50-16	6.38	5.00	1.375	T	8.5C-66-8830	D
8.5C	2.50-16	8.50	7.13	1.375	T	8.5C-66-7370	C
8.5C	2.50-16	8.50	7.88	0.625	T	8.5C-85WBLS40-3DC	B
8.5C	2.50-16	8.63	7.50	1.125	T	8.5C-6-8525	D
8.5C	2.50-10	8.19	7.94	0.250	T	8.5C-6-8503	D
8.5C	2.50-10	4.69	3.06	1.630	T	8.5C-66-4720	C
8C	3.00-10	3.69	2.56	1.128	T	8C-66-15190	D
8C	2.50-16	8.63	7.50	1.125	D	8C-6-8073	C
8C	2.50-16	9.75	8.63	1.125	D	8C-82NLS40-85DC	D
8C	2.50-16	8.63	7.50	1.125	T	8C-6-8076	C
8C	2.50-16	9.75	8.63	1.125	T	8C-66-11160	D
8C	2.50-10	8.00	7.50	0.500	D	8C-6-8002	D
8C	2.50-10	8.00	7.56	0.437	D	8C-82NLS40-2DC	D
8C	2.50-10	8.00	7.50	0.500	T	8C-6-8021	D
8C	2.50-10	9.75	8.63	1.125	T	8C-82NLS40-26DC	D
9C	3.00-16	8.75	7.63	1.125	T	9C-66-8730	D
9C	3.00-16	9.63	8.38	1.250	T	9C-6-9033	D
9C	3.00-16	9.63	8.50	1.125	T	9C-92NLS48-47DC	B
9C	3.00-10	6.13	5.13	1.000	D	9C-66-15460	D
9C	3.00-10	9.63	8.38	1.250	D	9C-6-9001	C
9C	3.00-10	5.75	4.75	1.000	T	9C-66-9520	D
9C	2.33-36	5.16	3.31	1.848	T	9C-61-16710	D



Slip Yokes (Round Bearing)



Style
S = Snap Ring
U = U-Bolt
BP = Bearing Plate

Series	Spline	Overall Length "A"	Length Thru Hole "B"	Cup to Center Length "C"	Mount Style	Part Number	Rating
1000	0.87 Hex	5.500	4.188	1.31	S	10-3-162X	D
1000	1.00-.25K	5.500	4.188	1.31	S	10-3-83X	D
1000	1.25-.31K	5.500	4.188	1.31	S	10-3-163X	D
1000	1.25-16	5.500	3.750	1.75	S	10-3-18KX	D
1100	1.06-16	2.875	1.165	1.71	S	1-3-88KX	A
1100	1.06-16	4.313	3.594	0.72	S	1-3-18KX	D
1310	1.25-16	4.125	3.125	1.00	S	2-3-258KX	C
1310	1.25-16	5.000	4.000	1.00	S	2-3-1421KX	D
1310	1.25-16	6.563	5.125	1.44	S	2-3-4441KX	D
1310	1.37-16	3.000	2.000	1.00	S	131N-66-8900	D
1310	1.37-16	4.188	3.200	0.99	S	2-3-348KX	C
1310	1.37-16	5.375	3.875	1.50	S	131N-66-14950	D
1310	1.37-16	5.375	4.375	1.00	S	2-3-128KX	A
1310	1.37-16	6.000	4.938	1.06	S	2-3-4951KX	D
1310	1.37-16	6.000	5.000	1.00	S	2-3-7981KX	C
1310	1.37-16	6.813	5.344	1.47	S	2-3-8001KX	A
1310	1.37-16	6.875	5.375	1.50	S	2-3-5221KX	B
1310	1.37-16	7.875	6.375	1.50	S	2-3-8021KX	C
1330	1.37-16	6.000	5.125	0.88	S	2-3-7961KX	D
1330	1.37-16	6.000	5.125	0.88	S	2-3-4681KX	D
1330	1.37-16/15	6.625	5.590	1.04	S	2-3-7681KX	D
1330	1.50-16/15	7.500	6.500	1.00	S	2-3-8111KX	D



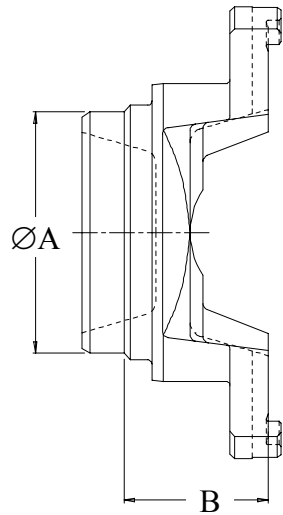
Series	Spline	Overall Length "A"	Length Thru Hole "B"	Cup to Center Length "C"	Mount Style	Part Number	Rating
1350	1.37-16	5.250	4.000	1.25	S	3-3-758KX	D
1350	1.37-16	5.813	5.609	0.20	S	3-3-2701KX	D
1350	1.37-16/15	6.813	5.625	1.19	S	3-3-1501KX	D
1350	1.37-32/31	6.625	5.406	1.22	S	3-3-2471KX	D
1350	1.50-16	3.688	2.520	1.17	S	3-3-398KX	C
1350	1.50-16	3.938	2.750	1.19	S	3-3-388KX	A
1350	1.50-16	5.813	4.500	1.31	S	3-3-598KX	A
1350	1.50-16	6.500	5.344	1.16	S	3-3-2841X	D
1350	1.50-16	6.719	5.531	1.19	S	3-3-1561KX	D
1350	1.50-16	7.313	6.125	1.19	S	3-3-488KX	A
1410	1.37-16	5.250	4.125	1.13	S	3-3-788KX	A
1410	1.37-16	5.813	4.688	1.13	S	3-3-1481KX	D
1410	1.50-16	3.906	2.750	1.16	S	3-3-468KX	A
1410	1.50-16	5.250	4.090	1.16	S	3-3-2041KX	D
1410	1.50-16	6.500	5.344	1.16	S	3-3-118KX	A
1410	1.50-16	6.813	5.500	1.31	S	3-3-1701KX	S
1410	1.50-16	7.813	6.469	1.34	S	3-3-508KX	A
1410	1.50-16	7.813	6.938	0.88	S	66-0227	D
1410	1.56-16	5.938	4.313	1.63	S	141N-66-9710	C
1410	1.57-16	6.610	5.250	1.36	S	141N-66-9160	B
1410	1.75-16	3.250	2.438	0.81	S	3-3-1511KX	D
1480	1.56-16	11.500	9.500	2.00	S	3-3-1661KX	D
1480	1.56-16	5.625	4.313	1.31	S	148N-66-8420	D
1480	1.56-16	6.813	5.500	1.31	S	3-3-1601KX	A
1480	1.56-16	9.500	7.500	2.00	S	3-3-1641KX	C
1480	2.25-10	3.719	2.594	1.13	S	3-3-1621KX	D
1550	1.75-16	10.063	8.000	2.06	S	4-3-1431KX	B
1550	1.75-16	6.875	5.500	1.38	S	4-3-1241KX	A
1550	1.75-16	8.125	6.750	1.38	S	4-3-1411KX	D
1550	2.50-16	3.500	2.563	0.94	S	4-3-1261KX	A
1610	2.00-16	10.813	8.375	2.44	BP	16N-3-2261X	B
1610	2.00-16	11.938	9.000	2.94	BP	16N-3-2141X	D
1610	2.00-16	11.938	9.063	2.88	BP	16N-3-2221X	D
1610	2.00-16	7.688	6.375	1.31	BP	16N-3-108X	C
1610	2.00-16	8.875	7.313	1.56	BP	16N-3-368X	D
1610	2.00-16	9.313	7.375	1.94	BP	16N-3-288X	D
1610	2.67-18	3.500	2.250	1.25	BP	16N-3-168X	D
1610	2.67-18	4.500	3.000	1.50	BP	16N-3-198X	D
1650	2.00-16	8.156		8.16	S	16N-3-1571X	D
1710	2.50-10	8.844	7.125	1.72	BP	17N-3-1461X	D



Series	Spline	Overall Length "A"	Length Thru Hole "B"	Cup to Center Length "C"	Mount Style	Part Number	Rating
1710	2.50-16	6.719	5.000	1.72	BP	17N-3-2761X	D
1710	2.50-16	7.469	5.750	1.72	BP	17N-3-2741KX	B
1710	2.50-16	8.310	6.590	1.72	BP	171N-66-16510	D
1710	2.50-16	9.594	7.875	1.72	BP	17N-3-2671X	A
1710	2.50-16	11.688	9.250	2.44	BP	17N-3-2651X	A
1710	2.50-16	12.719	9.500	3.22	BP	17N-3-2551X	D
1710	3.25-18	4.125	2.750	1.38	BP	17N-3-1661X	D
1710	3.25-18	4.875	3.500	1.38	BP	17N-3-1481X	D
1760	2.50-16	11.156	8.688	2.47	BP	176N-3-21X	D
1760	2.50-16	9.250	6.781	2.47	BP	176N-3-41X	D
1810	3.00-16	8.938	7.375	1.56	BP	18N-3-1431X	C
1810	3.00-16	10.250	7.875	2.38	BP	18N-3-1351X	B
1810	3.00-16	11.875	9.500	2.38	BP	18N-3-1371X	B
1810	3.25-18	5.375	3.875	1.50	BP	18N-3-1451X	D
1880	3.00-16	10.063	8.000	2.06	BP	185N-3-391KX	D
1880	3.00-16	11.656	9.625	2.03	BP	185N-3-411KX	D
1910	3.16-36	8.938	6.300	2.64	BP	19N-3-481X	D
2R	1.18-16	5.281	4.250	1.03	S	2R-6-2131	C
R7	2.00-10	7.875	6.750	1.13	BP	SY-700A	D



Weld Yokes (Wing Bearing)



Style
T = Threaded
D = Drilled

Series	Tube Size "A"	Overall Length "B"	Mount Style	Part Number	Rating
2C	2.00-065	1.000	D	2C-4710J	A
2C	2.00-083	1.000	D	2C-4710J-083	B
2C	2.00-120	1.000	D	2C-4710J-120	D
3C	2.00-065	1.125	D	3C-3814J	D
3C	2.00-083	1.125	D	3C-3922J	A
3C	2.00-083	1.125	T	3C-65-7780	C
3C	2.50-065	1.250	D	3C-3989J	C
3C	2.50-083	1.250	D	3C-19044J	C
4C	2.50-083	1.250	D	4C-3630J	B
4C	2.50-109	1.250	D	4C-6262J	A
4C	2.50-083	1.250	T	4C-11294J	C
5.8C	3.50-095	1.813	D	5.8C-58WBY53-1	D
5.8C	3.50-095	2.063	T	5.8C-58WBY53-9	D
5.8C	3.50-120	2.063	T	5.8C-65-9570	D
5C	2.50-095	1.125	D	5C-3536J	B
5C	2.50-109	1.125	D	5C-5166J	A
5C	2.50-095	1.125	T	5C-22704J	D
5C	2.50-109	1.125	T	5C-10186J	A
5C	3.00-095	1.250	D	5C-65-6650	C
5C	3.50-156	1.750	D	5C-26225J	B
6C	3.00-156	1.188	D	6C-65-9820	D
6C	3.00-095	1.875	D	6C-3669J	A
6C	3.00-120	1.875	D	6C-5140J	D
6C	3.00-120	1.875	D	6C-65-2270	D
6C	3.50-095	1.875	D	6C-9138J	A



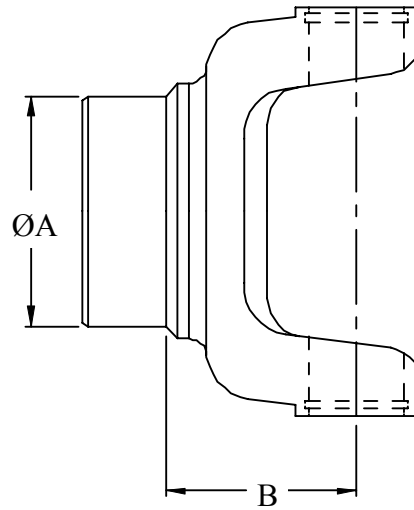
Series	Tube Size "A"	Overall Length "B"	Mount Style	Part Number	Rating
6C	3.50-120	1.875	D	6C-13780J	C
6C	3.50-134	1.875	D	6C-65-16160	B
6C	3.50-156	1.875	D	6C-25478JN	D
6C	3.50-250	1.875	D	6C-65-13760	D
6C	4.00-083	1.875	D	6C-9135J	D
6C	3.00-095	1.875	T	6C-9668J	A
6C	3.00-120	1.875	T	6C-14534J	D
6C	3.00-187	1.875	T	6C-16542J	A
6C	3.50-120	1.875	T	6C-62NY52-3	D
6C	3.00-187	1.906	D	6C-65-8440	D
6C	3.50-095	2.250	D	6C-16008J	D
7C	3.50-156	2.125	T	7C-65-14200	A
7C	3.50-156	1.531	T	7C-65-10990	D
7C	3.00-120	1.750	D	7C-65-8240	D
7C	3.00-120	1.750	T	7C-65-7430	D
7C	3.50-095	2.125	D	7C-8655J	B
7C	3.50-120	2.125	D	7C-10012J	A
7C	3.50-134	2.125	D	7C-72NY52-20	D
7C	3.50-134	2.125	D	7C-65-4928	B
7C	3.50-156	2.125	D	7C-16905J	C
7C	4.00-083	2.125	D	7C-72NY61-1	D
7C	4.00-109	2.125	D	7C-13434J	B
7C	4.00-134	2.125	D	7C-65-2110	D
7C	2.50-250	2.125	T	7C-65-13850	D
7C	3.00-095	2.125	T	7C-65-9040	C
7C	3.50-095	2.125	T	7C-10818J	B
7C	3.50-120	2.125	T	7C-24918J	A
7C	3.50-134	2.125	T	7C-65-8770	A
7C	3.00-120	2.688	D	7C-72NY44-2	D
7C	3.00-120	2.688	T	7C-72NY44	D
7C	3.50-095	3.000	D	7C-16787J	D
7C	3.50-120	3.000	D	7C-14089J	D
7C	3.50-134	3.000	D	7C-72NY52-9	D
7C	3.50-156	3.000	D	7C-72NY51-4	D
8.5C	4.50-.259	2.630	T	8.5C-65-4670-1	D
8.5C	4.00-134	2.000	T	8.5C-65-2590	D
8.5C	4.00-187	2.000	T	8.5C-65-2800	C
8.5C	4.50-187	2.000	T	8.5C-85WBY66-1	B
8.5C	4.50-259	2.000	T	8.5C-65-11000	C
8.5C	4.00-187	2.250	T	8.5C-22384J	D



Series	Tube Size "A"	Overall Length "B"	Mount Style	Part Number	Rating
8.5C	3.50-120	2.625	T	8.5C-65-12530	B
8.5C	4.00-134	2.625	T	8.5C-85WBY60-3	B
8C	4.00-109	2.438	D	8C-82NY60-1	D
8C	4.00-134	2.438	D	8C-65-7420	D
8C	4.00-187	2.438	D	8C-12710J	D
8C	4.00-134	2.438	T	8C-23327J	D
8C	4.25-250	2.438	T	8C-65-10930	D
8C	4.50-187	2.609	T	8C-82NY66-1	D
8C	4.00-187	2.688	D	8C-16752J	D
8C	4.00-187	2.688	T	8C-18114J	C
8C	4.00-134	2.875	D	8C-82NY60-19	D
9C	4.50-187	2.250	D	9C-92NY66	C
9C	4.00-134	2.250	D	9C-65-9000	D
9C	4.00-187	2.250	D	9C-65-13510	D
9C	4.00-134	2.250	T	9C-65-7400	D
9C	4.50-134	2.250	T	9C-92NY68-3	C
9C	4.50-187	2.250	T	9C-65-12320	D
9C	4.50-250	2.250	T	9C-65-8720	D
9C	4.50-259	2.250	T	9C-65-6710	B
11C	6.50-250	3.250	T	11C-65-13900	D



Weld Yokes (Round Bearing)



Style
S = Snap Ring
BP = Bearing Plate

Series	Tube Size "A"	Overall Length "B"	Mount Style	Part Number	Rating
1.5R	1.00 SQR	3.375	S	1.5R-17987J	B
1.5R	1.00 SQR	3.375	S	1.5R-10719J	C
1.5R	1.25 SQR	3.375	S	1.5R-10718J	D
1000	1.75-065	2.000	S	10-28-17	D
1000	1.75-065	2.688	S	10-28-47	D
1100	1.25-095	1.688	S	1-26-297	B
1100	2.00-065	1.500	S	1-28-107	D
1100	2.00-083	1.500	S	110N-65-11860	D
1310	1.25-120	2.125	S	2-26-347	D
1310	1.25-187	2.125	S	2-26-147	D
1310	2.00-065	1.688	S	2-28-417	D
1310	2.00-083	1.688	S	2-28-357	A
1310	2.00-120	1.688	S	2-28-1757	C
1310	2.50-065	1.844	S	2-28-277	D
1310	2.50-083	1.844	S	2-28-367	A
1310	2.75-065	1.688	S	2-28-307	D
1310	2.75-083	1.688	S	2-28-1617	D
1310	3.00-065	1.688	S	2-28-327	D
1310	3.00-083	1.688	S	2-28-437	B
1310	3.50-083	1.688	S	2-28-427	C
1330	3.00-083	1.719	S	2-28-1697	C
1330	3.50-083	1.813	S	2-28-1717	C
1350	2.50-083	1.938	S	3-28-47	A
1350	2.50-134	1.935	S	135N-65-14170	D
1350	2.50-134	2.519	S	135N-65-15170	D



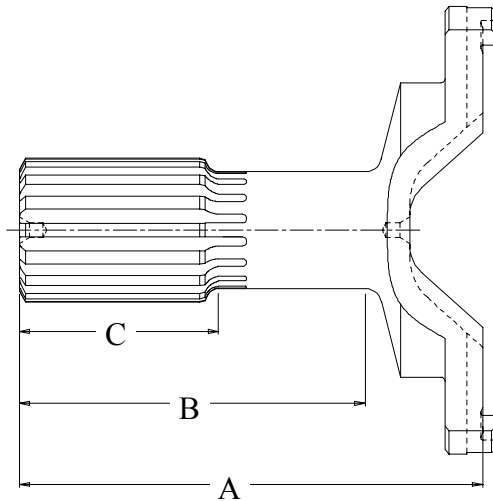
Series	Tube Size "A"	Overall Length "B"	Mount Style	Part Number	Rating
1350	3.00-083	2.000	S	3-28-57M	D
1350	3.00-083	2.000	S	3-28-57	A
1350	3.50-083	1.813	S	3-28-427	C
1410	2.50-095	2.000	S	3-28-327	?
1410	2.50-134	2.000	S	3-28-1147	C
1410	2.50-156	2.000	S	3-26-437	D
1410	2.75-083	1.625	S	3-28-987	D
1410	3.00-083	2.125	S	3-28-97	A
1410	3.00-095	2.125	S	3-28-267	D
1410	3.50-065	2.125	S	3-28-367	D
1410	3.50-083	2.125	S	3-28-557	A
1410	3.50-095	2.130	S	3-28-557-095	D
1480	3.00-095	1.688	S	3-28-497	C
1480	3.50-083	2.031	S	3-28-537	A
1480	3.50-083	2.313	S	3-28-547	C
1480	3.50-095	2.031	S	3-28-567	C
1480	4.00-083	2.031	S	3-28-507	B
1480	4.00-120	2.030	S	3-28-507-120	D
1500	3.50-095	2.813	S	4-28-177JN	D
1550	3.50-134	2.688	S	4-28-417-134	D
1550	3.00-095	2.438	S	4-28-377X	D
1550	3.50-095	1.813	S	4-28-257	D
1550	3.50-095	2.188	S	4-28-307	C
1550	3.50-095	2.688	S	4-28-417	A
1550	3.50-134	2.188	S	4-28-487	D
1550	3.50-134	2.688	S	155N-65-13220	D
1550	3.50-134	2.813	S	155N-65-12540	D
1550	4.00-083	2.188	S	4-28-277	D
1610	3.00-134	3.344	BP	16N-28-67	D
1610	3.50-095	3.000	BP	16N-28-167	C
1610	3.50-134	2.906	S	16N-28-357	D
1610	3.50-134	3.000	BP	16N-28-627	B
1610	3.50-156	3.000	BP	16N-28-207	C
1610	4.00-134	3.000	BP	16N-28-327	B
1710	3.50-156	2.563	BP	17N-28-147	D
1710	3.50-156	3.031	BP	17N-28-137	C
1710	4.00-134	3.031	BP	17N-28-347	A
1710	4.50-134	3.031	BP	17N-28-407	C
1760	4.00-134	3.031	BP	176N-28-17	D
1800	4.50-259	4.063	BP	18N-28-57	D



Series	Tube Size "A"	Overall Length "B"	Mount Style	Part Number	Rating
1810	3.55-207	3.375	BP	18N-28-137	D
1810	4.50-134	3.375	BP	18N-28-117	B
1810	4.50-259	3.375	BP	18N-28-127	B
1810	4.50-259	3.375	BP	18N-28-117-259	D
1880	4.50-259	4.000	BP	185N-28-147	D
2R	2.00-065	1.688	S	2R-7276J	C
L16N	1.18 SQR	3.625	S	22-1344	D
L16N	2.50-134	3.250	S	L16N-65-11670	C
L16N	2.50-134	3.875	S	L16SY36-4	D



Yoke Shafts (Wing Bearing)



Style
T = Threaded
D = Drilled

Series	Overall "A"	Radius "B"	Spline Length "C"	Spline	Style	Part Number	Rating
2C	3.070	2.078	0.984	0.78-24	D	2C-68-7310	D
2C	3.750	3.125	1.875	1.12-10	T	2C-9568J	D
2C	2.969	2.156	1.218	1.18-16	D	2C-4733J	D
2C	3.625	3.094	1.750	1.18-16	D	2C-68-4558	D
2C	5.420	4.531	2.125	1.18-16	D	2C-68-8660	C
2C	3.000	2.469	1.125	1.25-10	D	2C-68-1240-2	B
2C	3.625	3.125	2.063	1.25-19	D	2C-28K-124	C
2C	3.625	3.281	2.063	1.25-19	T	2C-13630J	D
3C	4.063	2.875	1.750	1.25-16	D	3C-6247J	C
4C	3.719	3.313	2.125	1.25-19	T	4C-68-3080	C
4C	4.375	3.281	2.063	1.25-19	T	4C-48K-140	C
4C	4.875	3.281	2.063	1.25-19	T	4C-48K-130	C
4C	4.719	3.344	2.125	1.37-10	D	4C-5326J	C
4C	5.063	3.813	2.375	1.37-10	D	4C-9013J	D
4C	6.313	4.910	1.750	1.37-10	D	4C-68-9620	D
4C	6.594	5.190	2.500	1.37-10	D	4C-13373J	D
4C	6.875	5.438	2.000	1.37-10	D	4C-68-9870	C
4C	7.375	5.938	2.500	1.37-10	D	4C-043-1010B	C
4C	6.625	4.625	4.625	1.50-10	D	4C-68-12870	D
5C	3.375	2.188	2.188	1.50-10	T	5C-68-6170	D
5C	4.375	3.063	1.625	1.50-10	D	5C-68-7140	C
5C	4.625	3.313	1.875	1.50-10	T	5C-68-2560	D
5C	5.313	4.031	2.250	1.50-10	D	5C-5560J	B
5C	7.750	5.844	3.000	1.50-10	T	5C-68-7810	C
5C	4.625	3.313	1.875	1.56-16	T	5C-68-9140	D



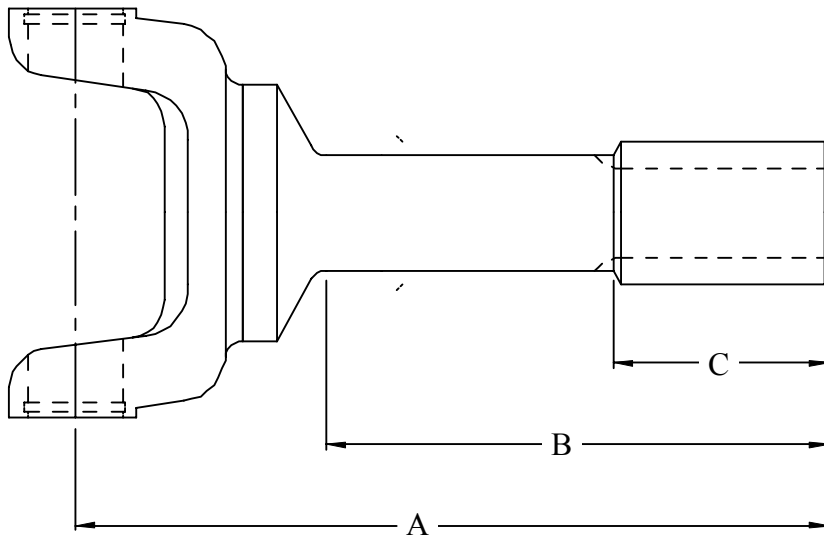
Series	Overall "A"	Radius "B"	Spline Length "C"	Spline	Style	Part Number	Rating
5C	5.313	4.031	2.250	1.56-16	D	5C-68-5660	B
5C	7.125	5.750	3.000	1.56-16	D	5C-68-12160	D
5C	7.375	5.375	3.000	1.56-16	D	5C-68-13280	D
5C	9.688	6.000	3.000	1.75-10	D	5C-68-12950	D
6C	9.440	7.500	2.250	1.56-16	T	6C-68-14020	D
6C	7.940	6.125	3.000	1.56-16	T	6C-68-13040	D
6C	10.250	8.500	3.000	1.75-10	D	6C-68-8050	D
6C	10.250	8.500	3.000	1.75-10	T	6C-68-0224	A
6C	5.563	3.938	2.500	1.75-10	D	6C-5571J	A
6C	5.563	3.938	2.500	1.75-10	T	6C-68-11850	D
6C	5.875	3.563	3.563	1.75-10	D	6C-68-16180	D
6C	7.375	5.063	5.063	1.75-10	D	6C-68-8970	D
6C	8.250	6.500	3.000	1.75-10	D	6C-68-0820	C
6C	9.188	7.438	3.000	1.75-10	D	6C-68-7950	D
6C	9.531	7.781	3.000	1.75-10	D	6C-68-4760	D
6C	9.875	5.844	3.000	1.75-10	T	6C-68-10900	D
6C	5.313	3.690	2.250	1.75-16	D	6C-68-14640	C
6C	6.380	4.630	3.000	1.75-16	D	6C-68-8690	B
6C	4.625	3.000	1.250	1.75-16	T	6C-28277J	D
6C	5.188	3.563	2.250	1.75-16	T	6C-68-4951	D
6C	5.250	3.625	2.125	1.75-16	T	6C-25999J	D
6C	5.625	4.000	2.250	1.75-16	T	6C-28357J	D
6C	5.938	4.313	1.860	1.75-16	T	6C-22938J	D
6C	6.250	4.625	2.500	1.75-16	D	6C-23523J	B
6C	7.938	6.188	3.000	1.75-16	T	6C-68-4952	D
6C	8.188	6.000	3.000	1.75-16	T	6C-68-2830	D
6C	8.375	6.625	3.000	1.75-16	T	6C-68-4950	D
6C	9.531	7.781	3.000	1.75-16	T	6C-68-2488	D
6C	9.313	7.906	2.500	2.00-12	D	6C-22048J	D
7C	5.440	3.500	2.000	2.00-10	T	7C-68-0600	C
7C	10.660	8.375	4.000	2.00-10	T	7C-37141	A
7C	11.125	7.125	3.500	2.00-10	T	7C-68-16120	D
7C	11.562	9.813	9.813	2.00-10	T	7C-68-5270	D
7C	11.563	9.813	4.000	2.00-10	T	7C-26243J	D
7C	18.000	14.500	14.500	2.00-10	T	7C-68-7120	D
7C	4.875	3.000	3.000	2.00-10	T	7C-68-15120	C
7C	5.438	3.188	2.813	2.00-10	T	7C-68-12890	D
7C	5.438	3.500	3.500	2.00-10	T	7C-37145	C
7C	5.625	3.375	3.000	2.00-10	T	7C-68-7320	D
7C	5.625	3.688	3.688	2.00-10	T	7C-68-6290	D



Series	Overall "A"	Radius "B"	Spline Length "C"	Spline	Style	Part Number	Rating
7C	6.313	4.563	2.750	2.00-10	T	7C-68-12800	D
7C	6.688	4.938	2.906	2.00-10	D	7C-12412J	D
7C	7.000	5.250	2.844	2.00-10	D	7C-5505J	B
7C	7.688	5.938	3.031	2.00-10	D	7C-26040J	D
7C	8.250	6.500	2.313	2.00-10	D	7C-68-13820	D
7C	8.688	6.938	2.750	2.00-10	D	7C-29052J	C
7C	8.688	6.938	2.750	2.00-10	T	7C-29053J	D
7C	11.125	7.560	3.500	2.00-16	D	7C-68-14460	C
7C	10.625	8.875	4.000	2.00-16	T	7C-27865J	C
7C	11.438	7.656	3.500	2.00-16	D	7C-68-12860	D
7C	5.625	3.875	2.250	2.00-16	D	7C-68-10870	B
7C	5.625	3.875	2.250	2.00-16	T	7C-29491J	B
7C	6.094	4.500	2.156	2.00-16	D	7C-68-13560	D
7C	6.906	5.156	2.969	2.00-16	D	7C-25518J	B
7C	6.906	5.313	2.969	2.00-16	T	7C-26731J	A
7C	7.375	5.625	3.250	2.00-16	T	7C-27570J	D
7C	7.875	6.125	3.750	2.00-16	T	7C-27123J	D
7C	9.438	7.688	4.000	2.00-16	T	7C-27572J	B
7C	6.730	4.063	1.980	2.47-19	T	7C-R93529	D
8.5C	11.000	7.375	4.000	2.00-16	T	8.5C-68-12670	D
8.5C	11.750	7.375	4.000	2.00-16	T	8.5C-68-12520	D
8.5C	7.063	4.563	4.563	2.50-10	T	8.5C-68-4720	C
8.5C	8.500	6.313	6.313	2.50-10	T	8.5C-68-8150	D
8.5C	11.188	8.375	4.000	2.50-16	T	8.5C-68-11320	D
8.5C	11.438	8.375	4.000	2.50-16	T	8.5C-68-7390	D
8.5C	12.125	8.375	4.000	2.50-16	T	8.5C-68-7370	C
8.5C	8.313	5.250	4.000	2.50-16	T	8.5C-68-8830	D
8C	9.688	9.813	3.563	2.50-10	T	8C-82NYSM40-49	D
8C	13.625	9.563	3.500	2.50-16	T	8C-68-11160	D
8C	5.205	5.205	3.134	3.00-10	T	8C-68-15190	D
9C	7.375	5.875	5.875	3.00-10	T	9C-68-9520	D
9C	9.500	6.125	6.125	3.00-10	T	9C-68-15460	D
9C	10.875	7.906	4.000	3.00-16	T	9C-68-8730	D
9C	12.344	8.406	4.500	3.00-16	T	9C-68-6160	D
9C	14.125	10.031	4.500	3.00-16	T	9C-68-5420	D



Yoke Shafts (Round Bearing)



Style
S = Snap Ring
BP = Bearing Plate

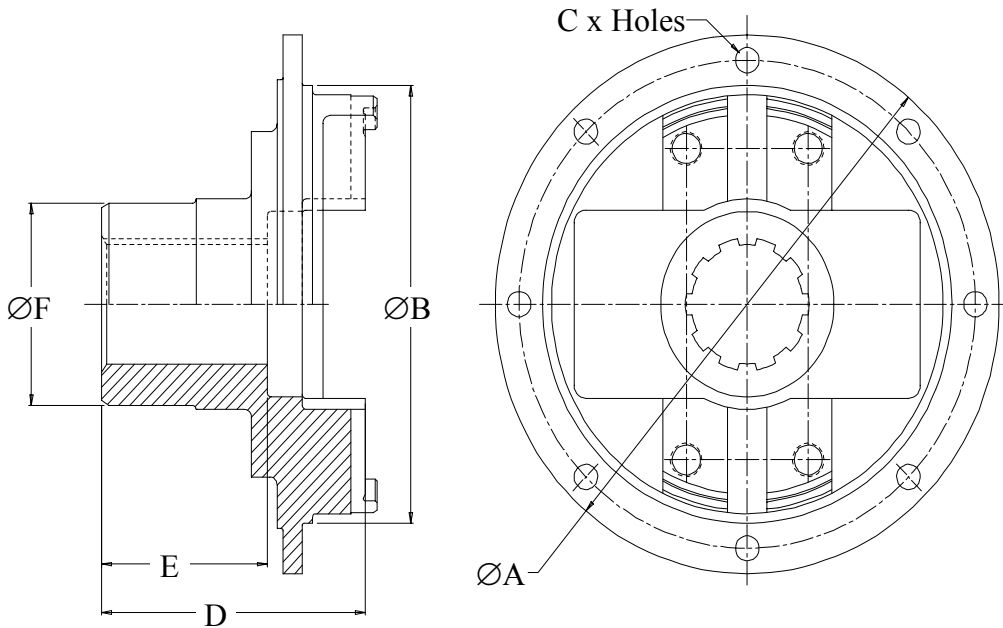
Series	Length to Radius "B"	Spline Length "C"	Spline	Overall Length "A"	Mount Style	Part Number	Rating
1100	2.344	1.438	1.06-16	3.844	S	1-82-21	A
1310	3.344	1.875	1.25-16	5.125	S	2-82-51	C
1310	4.031	2.000	1.25-16	5.813	S	2-82-41	D
1310	13.250	13.250	1.37-10	15.437	S	131N-68-8570	D
1310	2.000	2.000	1.37-16	4.563	S	131N-68-8900	D
1310	3.219	2.000	1.37-16	4.563	S	2-82-11	D
1310	3.438	2.063	1.37-16	4.625	S	2-82-641	D
1310	3.719	2.250	1.37-16	5.313	S	2-82-21	A
1310	4.688	2.500	1.37-16	7.063	S	2-82-58X	D
1350	2.844	1.750	1.50-16	4.813	S	3-82-71	C
1350	3.125	2.000	1.50-16	5.188	S	3-82-61	B
1350	4.750	2.500	1.50-16	6.813	S	3-82-181	A
1410	3.125	2.000	1.50-16	4.969	S	3-82-1191	A
1410	4.969	2.500	1.50-16	7.844	S	141N-68-12200	B
1410	6.094	3.000	1.50-16	8.969	S	3-82-268X	D
1410	2.672	1.438	1.75-16	4.547	S	3-82-261	D
1480	4.500	2.750	1.56-16	6.750	S	3-82-1121	C
1480	2.813	1.594	2.25-10	4.375	S	3-82-271	D
1550	2.500	1.438	1.75-16	4.750	S	4-82-341	D
1550	5.813	3.000	1.75-16	9.750	S	155N-68-11800	D
1550	2.375	1.563	2.50-16	4.563	S	4-82-191	B
1550	3.250	1.563	2.50-16	4.813	S	4-82-201	B
1610	7.563	3.500	2.00-16	10.812	BP	16N-82-781	D



Series	Length to Radius "B"	Spline Length "C"	Spline	Overall Length "A"	Mount Style	Part Number	Rating
1610	9.875	3.500	2.00-16	15.000	BP	16N-82-751-2	D
1610	5.313	3.000	2.00-16	7.875	BP	16N-82-211	C
1610	5.969	3.000	2.00-16	9.531	BP	16N-82-791-2	D
1610	2.438	1.500	2.67-18	4.125	BP	16N-82-161	D
1650	6.688	3.500	2.00-16	11.125	S	165N-82-481	D
1710	10.125	4.000	2.50-10	15.063	BP	17N-82-1061-3	D
1710	11.125	4.000	2.50-10	16.031	BP	17N-82-1061-11	D
1710	6.813	3.500	2.50-16	10.156	BP	17N-82-1171-11	D
1710	7.813	3.500	2.50-16	11.156	BP	17N-82-1171-2	D
1710	7.563	3.500	2.50-16	11.250	BP	17NYSM40-45	D
1710	8.094	4.000	2.50-16	11.781	BP	17N-82-1091-12	D
1710	8.469	4.000	2.50-16	12.156	BP	17N-82-1091-1	D
1710	9.094	3.500	2.50-16	12.438	BP	17N-82-1171-6	D
1710	10.375	4.000	2.50-16	14.063	BP	17N-82-1091-10	D
1710	10.469	4.000	2.50-16	14.156	BP	17N-82-1091-3	D
1710	5.219	3.000	2.50-16	8.156	BP	17NYSM-40-89	D
1710	6.313	3.500	2.50-16	9.656	BP	17N-82-1171-10	B
1710	3.125	2.000	3.25-18	5.250	BP	17N-82-341	D
1760	8.688	4.000	2.50-16	11.500	BP	176N-82-21-2	D
1760	10.781	4.000	2.50-16	12.875	BP	176N-82-21-6	D
1810	8.313	4.000	3.00-16	11.938	BP	18N-82-451-3	D
1810	8.313	4.500	3.00-16	12.188	BP	18N-82-461-1	D
1810	8.813	4.000	3.00-16	12.438	BP	18N-82-451-5	D
1810	8.813	4.500	3.00-16	12.688	BP	18N-82-461-2	D
1810	9.938	4.500	3.00-16	13.812	BP	18N-82-461-8	D
1810	11.188	4.500	3.00-16	15.688	BP	18N-82-461-10	D
1810	4.188	2.750	3.25-18	6.719	BP	18N-82-511-1	D



Brake Yokes (Wing Bearing)



Type
M = Male
F = Female

Style
T = Threaded
D = Drilled

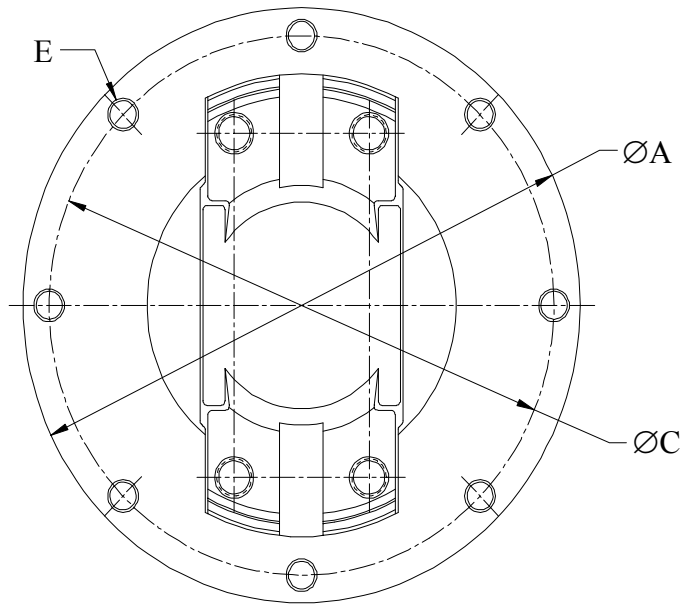
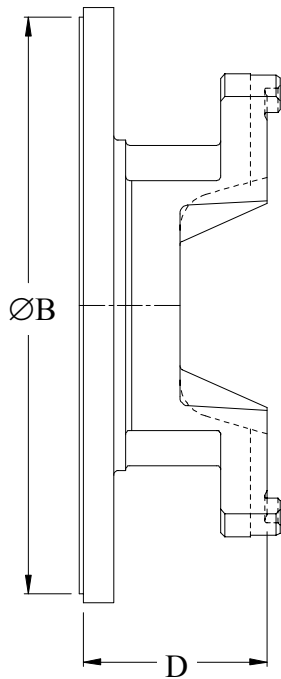
Series	O.D. "A"	Pilot "B"	Type	B.C. "G"	# of Holes	Spline	Overal "D"	Thru "E"	Hub "F"	Style	Part Number	Rating
2C	4.875	3.500	M	4.250	4	1.25-10	1.844	1.156	2.000	T	2C-64-12660*	D
2C	4.880	3.500	M	5.250	4	1.25-10	1.840	1.160	2.000	T	2C-3009068*	D
4C	6.250	4.750	M	5.688	4	1.25-10	1.844	0.813	2.000	T	4C-64-11230*	D
6C	12.50	6.500	F	--	0	1.75-10	3.310	2.250	2.750	T	6C-90205599	D
6C	6.375	4.250	F	5.500	4	1.75-10	3.938	1.859	2.625	T	6C-L127600	C
6C	8.000	6.000	M	7.125	8	1.75-10	3.500	2.250	2.625	T	6C-8753-970*	B
6C	8.000	6.000	F	7.125	8	1.75-10	3.500	2.250	2.750	T	6C-P25489*	D
6C	6.375	4.250	F	5.500	4	1.96-10	3.938	1.859	2.599	T	6C-077UE101	D
6C	7.625	6.875	M	6.152	6	1.96-10	3.375	2.250	3.000	T	6C-22601J*	C
6C	6.375	5.531	M	5.500	4	2.04-39	4.094	2.250	2.625	T	6C-64-5750	B
7C	8.000	6.500	M	7.250	8	1.75-10	3.500	2.188	2.625	T	7C-19495-1*	D
7C	8.000	6.250	M	7.250	8	1.75-10	3.500	2.250	2.628	T	7C-64-6230*	B
7C	8.000	6.438	M	7.250	8	1.75-10	4.375	2.250	2.625	T	7C-28126J*	D
7C	8.000	5.308	F	7.250	8	1.77-34	4.375	2.250	3.000	T	7C-64-7040*	D
7C	8.000	6.250	F	7.141	8	1.96-10	5.110	2.250	2.625	T	7C-40053	D
7C	8.000	6.500	M	7.250	8	1.96-10	4.188	2.625	3.000	T	7C-75043*	D
7C	8.000	6.436	M	7.250	8	2.00-10	4.000	2.250	2.755	T	7C-17096J	D
7C	8.000	6.500	M	7.250	8	2.00-10	4.375	3.000	3.000	T	7C-24488J*	B
7C	8.000	6.000	F	7.125	6	2.00-30	3.500	2.250	2.625	T	7C-37655*	D
7C	8.000	6.250	F	7.141	8	2.25-10	5.110	2.500	3.500	T	7C-36293	B
7C	8.000	6.000	F	7.125	6	2.25-34	3.474	2.171	3.000	T	7C-54404P	D



Series	O.D. "A"	Pilot "B"	Type	B.C. "G"	# of Holes	Spline	Overall "D"	Thru "E"	Hub "F"	Style	Part Number	Rating
8.5 C	7.125	5.449	M	6.125	8	2.38-18	5.600	2.320	3.250	T	8.5C-64-15140*	D
8.5 C	10.50	8.688	M	9.500	8	2.67-20	4.750	2.438	3.500	T	8.5C-29149J*	C
8C	10.51	8.688	M	9.500	8	2.06-20	3.922	2.500	2.938	T	8C-87829*	D
8C	10.25	NONE	M	9.250	8	2.38-18	4.313	3.375	3.500	T	8C-64-13240*	D
8C	10.25	8.688	M	9.500	8	2.42-18	5.210	3.355	3.500	T	8C-64-7980*	D



Flange Yoke (Wing Style)



Type
F = Female
M = Male

Earwork
D = Drilled
T = Threaded

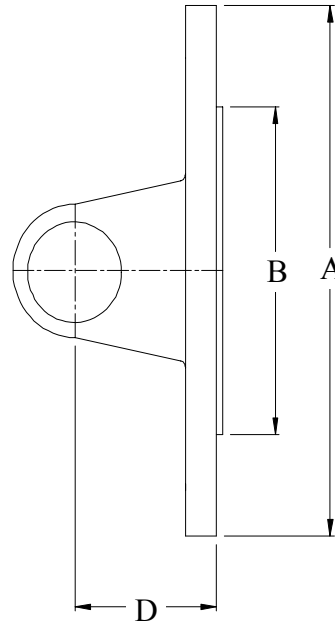
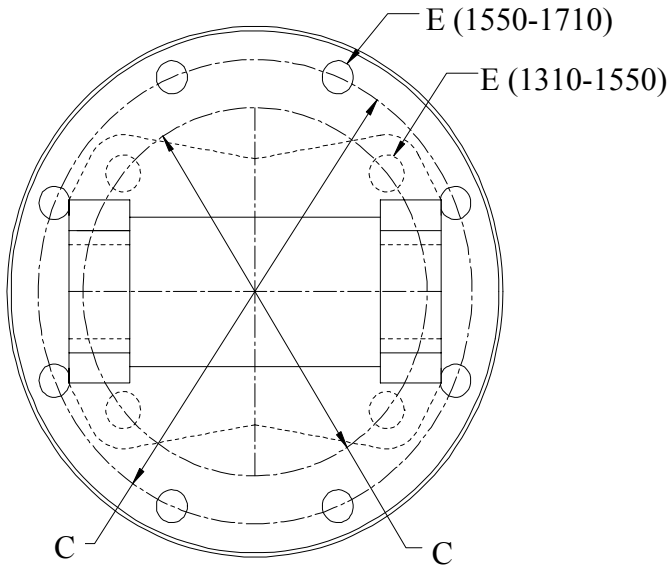
Series	O.D. "A"	Pilot "B"	Type	B.C. "C"	# of Holes	Hole "E"	Overall "D"	Mount Style	Part Number	Rating
2C	4.750	1.626	F	4.000	6	.406	0.594	D	2C-32801	D
2C	3.938	3.938	M	4.418	4	.344	1.625	D	2C-60-8580	D
2C	5.000	5.000	M	4.000	6	.406	1.875	D	2C-60-8480	D
3C	4.750	4.750	M	2.000	4	.406	0.594	T	3C-59432	C
3C	4.000	4.000	M	3.250	4	.375	1.750	D	3C-22688J	D
3C	5.000	5.000	M	4.000	6	.406	1.938	D	3C-48825	D
3C	6.250	4.065	F	5.125	5	.406	2.125	T	3C-116-26649	D
4C	4.500	3.250	M	3.953	6	.313	1.500	D	4C-60-8450	D
4C	4.563	2.750	M	3.750	4	.453	1.688	T	4C-116-27196	D
4C	5.000	3.750	M	4.438	6	.320	1.813	D	4C-116-26414	D
4C	4.000	4.000	M	3.250	4	.375	1.813	D	4C-3975J	D
4C	5.375	5.375	M	4.750	4	.531	1.813	D	4C-60-11440	D
4C	4.688	2.750	M	3.750	4	.438	1.875	D	4C-60-13100	D
5C	5.875	3.750	M	4.750	4	.506	2.000	T	5C-60-14940	D
5C	4.750	4.750	M	2.000	4	.406	0.875	T	5C-80481	B
5C	4.563	2.750	M	3.750	4	.438	1.875	D	5C-4499J	D
5C	4.882	4.882	M	4.250	6	.406	1.875	D	5C-60-1411	D
5C	5.750	3.750	M	5.063	8	.375	1.938	D	5C-4204J	D
5C	6.125	6.125	M	--	0	--	1.938	D	5C-4905J	C
5C	6.875	6.625	M	6.125	8	.375	1.938	D	5C-60-11210	D



Series	O.D. "A"	Pilot "B"	Type	B.C. "C"	# of Holes	Hole "E"	Overall "D"	Mount Style	Part Number	Rating
6C	5.840	3.750	M	4.750	4	.515	1.380	D	6C-8050705	D
6C	5.750	3.750	M	5.062	8	.375	2.250	T	6C-60-14790	D
6C	5.750	3.750	M	4.750	4	.515	1.375	T	6C-15678J	D
6C	7.000	1.251	F	5.500	6	.406	2.250	D	6C-60-9630	D
6C	7.000	4.330	F	6.125	8	.375	2.250	T	6C-60-11640	D
6C	6.875	6.625	M	6.125	8	.375	2.250	D	6C-8753998	D
6C	6.875	6.625	M	6.125	8	.375	2.250	D	6C-4221J	B
6C	6.875	6.625	M	6.125	8	.375	2.250	D	6C-116-26411	D
6C	6.875	6.625	M	6.125	8	.375	2.250	D	6C-62NF13	D
6C	7.000	7.000	M	--	0	--	2.313	D	6C-116-30106-1	D
6C	13.875	13.875	M	13.125	8	.406	2.625	T	6C-60-4710	D
7C	6.875	5.375	F	6.125	8	.375	2.563	D	7C-4686J	D
7C	8.000	7.749	M	7.250	8	.375	1.500	D	7C-8522J	D
7C	6.875	6.625	M	6.125	8	.375	1.625	D	7C-6397J	D
7C	6.875	6.625	M	6.125	8	.375	1.625	T	7C-60-8410	D
7C	8.000	7.750	M	7.250	8	.375	2.000	T	7C-R8522	D
7C	7.000	4.324	F	6.125	8	3/8-24	2.250	T	7C-60-13720	D
7C	6.875	6.625	M	6.125	8	.375	2.500	D	7C-60-13120	D
7C	8.000	7.750	M	7.250	8	.375	2.563	D	7C-4222J	D
7C	6.875	6.625	M	6.125	8	.375	2.590	T	7C-60-8190	B
7C	8.000	7.750	M	7.250	8	.375	2.625	T	7C-60-7130	D
7C	5.096	3.543	F	5.118	8	.476	2.750	T	7C-60-13030	D
7C	5.750	5.375	F	4.750	6	.344	3.000	T	7C-60-7440	D
8.5C	5.906	3.544	F	5.125	8	12MM	2.875	T	8.5C-60-8160	D
8.5C	7.094	4.328	F	6.125	8	.563	2.906	T	8.5C-60-7170	D
8C	8.000	7.750	M	7.250	8	.375	2.938	T	8C-82NF16	D
8C	8.000	7.750	M	7.250	8	.391	3.063	D	8C-60-12210	D
8C	8.000	7.750	M	7.250	8	.391	3.063	T	8C-60-2610	C
9C	8.000	7.750	M	7.250	8	.438	3.000	D	9C-8752J	D



Flange Yokes (Round Bearing)



Type
F = Female
M = Male

Earwork
S = Snap Ring
BP = Bearing Plate

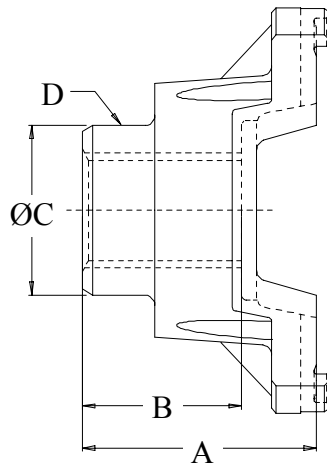
Series	O.D. "A"	Pilot "B"	Type	B.C. "C"	# of Holes	Hole "E"	Overall "D"	Mount Style	Part Number	Rating
1000	3.500	2.250	M	2.750	4	.313	1.563	S	10-2-29	B
1100	3.500	2.250	M	2.750	4	.313	1.188	S	1-2-39	A
1310	3.875	2.375	M	3.125	4	.375	1.375	S	2-2-329	A
1310	3.875	2.375	M	3.125	4	.375	1.625	S	2-2-459	C
1310	4.625	2.750	M	3.750	4	.438	1.375	S	2-2-479	A
1310	3.625	3.625	M	2.875	4	.375	1.375	S	2-2-349	D
1310	5.750	3.750	M	4.750	4	.500	1.375	S	2-2-579	D
1350	5.000	2.750	M	3.750	4	.438	2.375	S	135N-60-14030	B
1350	4.625	2.750	M	3.750	4	.438	1.281	S	3-2-809	C
1350	4.625	2.750	M	3.750	4	.438	1.563	S	3-2-119	A
1350	6.750	3.563	F	5.500	4	.438	1.844	S	3-2-699	D
1410	4.625	2.750	M	3.750	4	.438	1.688	S	3-2-159	A
1410	4.625	2.750	M	3.750	4	.438	1.938	S	3-2-439	C
1410	5.875	3.750	M	4.750	4	.500	2.000	S	3-2-429	A
1410	6.875	6.875	M	6.125	8	.375	2.000	S	3-2-309	D
1480	5.906	3.542	F	5.118	8	.438	2.594	S	148N-60-14490	D
1480	5.875	3.750	M	4.750	4	.500	1.500	S	3-2-489	C
1480	5.875	3.750	M	4.750	4	.500	2.000	S	3-2-609	D
1480	5.875	3.750	M	4.750	4	.500	2.000	S	3-2-479	A
1480	6.875	5.375	F	6.125	8	.375	2.000	S	3-2-499	C



Series	O.D. "A"	Pilot "B"	Type	B.C. "C"	# of Holes	Hole "E"	Overall "D"	Mount Style	Part Number	Rating
1550	5.875	3.750	M	4.750	4	.500	1.500	S	4-2-679	C
1550	5.875	3.750	M	4.750	4	.500	2.000	S	4-2-669	A
1550	6.875	6.625	M	6.125	8	.375	2.000	S	4-2-689	C
1610	6.875	3.000	F	6.125	8	(4).38- TH(4).5	3.125	BP	161N-60-6770	D
1610	8.000	6.438	M	7.250	8	.375	2.750	BP	16N-2-709	D
1610	6.875	6.625	M	6.125	8	.375	1.875	BP	16N-2-379	C
1610	6.875	6.625	M	6.125	8	.375	2.750	BP	16N-2-279	A
1610	8.000	7.750	M	7.250	8	.375	1.875	BP	16N-2-619	D
1610	8.000	7.750	M	7.250	8	.375	2.750	BP	16N-2-629	D
1650	8.000	7.750	M	7.250	8	.375	2.500	S	16N-2-809	D
1710	8.000	6.438	M	7.250	16	.438	3.000	BP	17N-2-1219	B
1710	8.000	6.438	M	7.250	8	.375	3.000	BP	17N-2-789	D
1710	8.000	7.750	M	7.250	8	.375	2.000	BP	17N-2-769	D
1710	8.125	7.750	M	7.250	8	.438	2.500	BP	17N-2-1349	D
1710	8.000	7.750	M	7.250	12	.438	3.000	BP	17N-2-779	D
1710	8.000	7.750	M	7.250	8	.375	3.000	BP	17N-2-749	A
1710	8.000	7.750	M	7.250	8	.438	3.000	BP	171N-60-6340	D
1710	8.000	7.750	M	7.250	8	.438	3.000	BP	17N-2-739	B
1760	8.000	7.750	M	7.250	12	.438	3.375	BP	176N-2-19	D
1810	8.000	7.750	M	7.250	12	.438	2.594	BP	18N-2-359	C
1810	8.000	7.750	M	7.250	12	.438	3.375	BP	18N-2-329	B
1880	9.750	7.000	M	8.250	8	.625	2.500	BP	185N-2-119	C
1880	9.750	7.000	M	8.250	8	.625	3.594	BP	185N-2-109	D
1900	10.87 5	8.749	M	9.750	8	.625	3.875	BP	19N-2-19	D
L16N	5.000	2.500	M	3.906	4	.531	1.563	S	L16N-60-12750	C
L16N	6.000	4.000	F	5.250	8	.375	1.375	S	L16N-60-11830	B
L16N	5.750	4.325	M	5.125	6	.375	1.500	S	L16N-60-11360	C
L16N	6.000	6.000	M	5.250	8	.375	1.625	S	L16N-60-11820	B
L16N	6.750	6.750	M	5.875	6	.500	1.625	S	L16N-60-12700	D
R7	6.875	3.000	F	6.125	8	(4).38- TH(4).5	2.375	BP	R7-FY-116	D



Transmission Yokes (Wing Bearing)

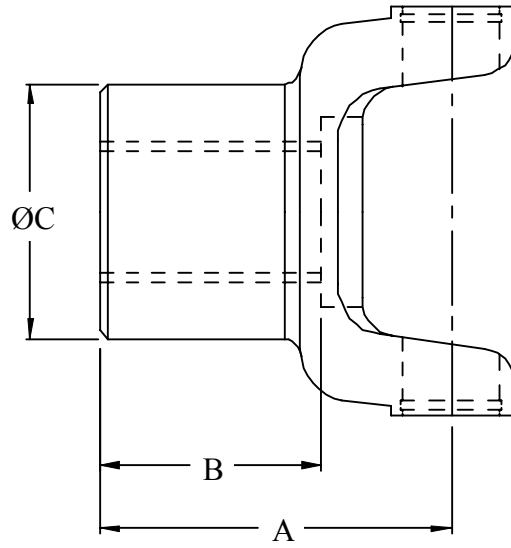


Style
T = Threaded
D = Drilled

Series	Spline	Overall Length "A"	Length Thru Bore "B"	Hub Diameter "C"	Hub Surface Type "D"	Mount Style	Part Number	Rating
2C	1.12-10	2.500	2.406	1.625	Polished	T	2C-121-2050	D
2C	1.12-10	2.813	2.688	1.625	Polished	T	2C-121-2066	C
4C	1.25-14	1.938	1.938	2.250	Polished	D	4C-121-4083	D
4C	1.25-14	2.438	1.938	2.625	Ground	D	4C-121-4041	C
4C	1.25-14	3.313	2.594	2.250	Ground	T	4C-121-4089	D
4C	1.37-10	2.719	2.531	1.750	Ground	D	4C-121-4077	D
4C	1.37-10	2.938	2.813	1.875	Polished	T	4C-121-4085J	C
4C	1.77-27	4.375	3.250	2.128	Ground	T	4C-61-9080	D
5C	1.25-14	1.940	1.810	2.250	Ground	T	5C-121-5073	C
6C	1.75-10	2.750	2.563	2.375	Polished	T	6C-121-6101	D
6C	1.75-10	3.344	2.094	2.375	Polished	D	6C-121-6040	D
6C	1.78-34	3.125	2.250	2.562	Ground	T	6C-121-6066	D



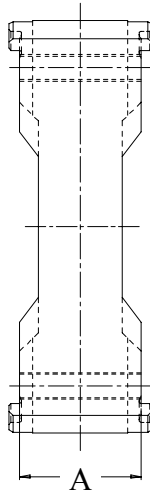
Transmission Yokes (Round Bearing)



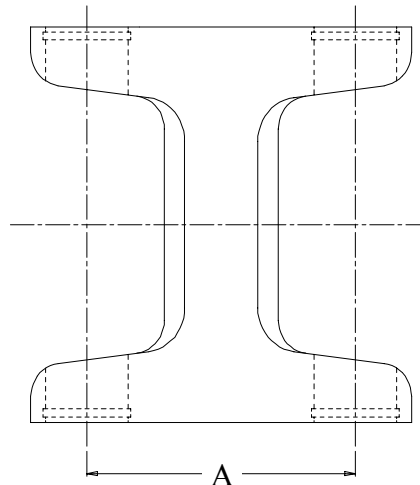
Series	Spline	Overall Length "A"	Length Thru Bore "B"	Hub Diameter "C"	Hub Surface Type "D"	Part Number	Rating
1000	1.12-10	5.500	4.188	1.6875	Ground	10-3-81X	D
1310	1.11-25/24	6.500	5.280	1.3750	Ground	2-3-8431X	C
1310	1.15-26/25	6.000	5.125	1.5580	Ground	2-3-9781X	D
1310	1.17-27/26	5.469	4.590	1.5000	Ground	2-3-6361X	D
1310	1.56-24	4.125	3.250	2.0000	Ground	2-3-9761X	D
1330	1.21-28/27	5.906	5.030	1.5000	Ground	2-3-5981X	D
1330	1.39-31/30	6.000	5.000	1.6875	Ground	2-3-6041X	D
1350	1.37-32/31	5.594	3.695	1.8750	Ground	3-3-2501	D



Center Yokes (Wing and Round Bearing)



Style
D, T



Style
S

Style
T = Threaded
D = Drilled
S = Snap Ring

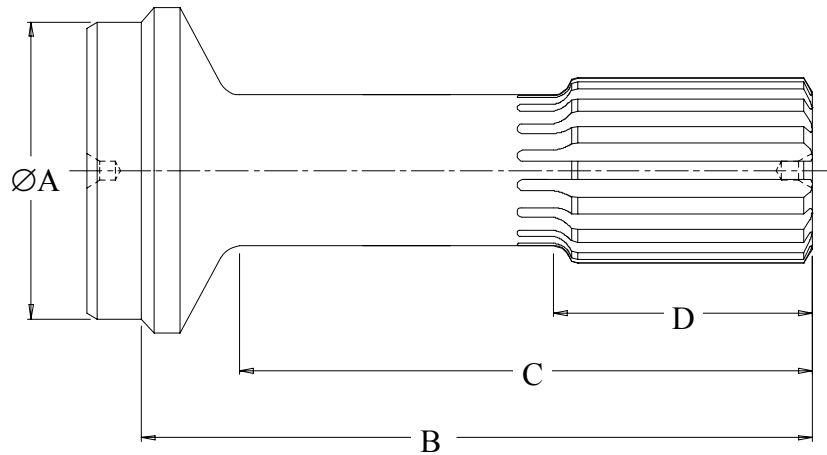
Series	Overall Length "A"	Series Style	Part Number	Rating
1310	2.69	S	2-26-497	B
1310	3.88	S	2-26-507	C
1350	2.75	S	3-26-317	D
1410	3.03	S	141N-10-9080	A
2C	0.50	D	2C-10-5900	B
2C	0.81	D	2C-6601J	A
2C	1.25	T	2C-50041J	D
2C	1.81	D	2C-60-7690	D
2C	1.81	T	2C-11148J	D
2C	2.25	D	2C-10-11020	D
3C	0.94	D	3C-5498J	B
3C	1.13	T	3C-59434	D
3C	2.56	D	3C-10-9940	D
4C	0.69	D	4C-10-4450	D
4C	0.94	D	4C-5565J	B
4C	1.31	T	4C-10-6800	D
4C	2.91	D	4C-119-23747-1	D
6C	1.00	D	6C-5426J	D
5C	1.38	D	5C-5491J	A
5C	1.38	T	5C-10-12650	D
5C	3.36	D	5C-119-14187-1	D
6C	1.38	D	6C-5567J	C



Series	Overall Length "A"	Series Style	Part Number	Rating
6C	1.38	T	6C-9196J	C
6C	2.13	T	6C-10-9790	D
6C	2.25	T	6C-19145J	D
6C	3.94	D	6C-119-16985-1	D
6C	4.19	D	6C-119-23513-1	D
7C	1.75	D	7C-5586J	C
7C	1.75	T	7C-10-12620	B
8.5C	2.00	T	8.5C-18639J	C
8C	1.66	D	8C-5461J	D
8C	1.75	T	8C-82N170	D
9C	1.25	D	9C-10500J	D
9C	2.00	T	9C-7985J	D
9C	2.44	T	9C-10543J	C
L16N	2.25	S	L16N-10-11840	A
L16N	2.38	S	L16N-11-11360	D



Slip Stubs



* = Must mate with Dana Spicer spline

Overall Length "B"	Length to Radius "C"	Length of Spline "D"	Spline Size	Tube Size "A"	Part Number	Rating
4.281	4.000	1.750	1.06-16	1.25-095	1-42-31*	D
4.688	4.313	2.000	1.06-16	1.25-095	1-42-341*	D
5.063	4.313	2.000	1.06-16	1.50-120	1-42-351*	D
5.281	4.531	2.125	1.18-16	2.00-065	2C-4572J	C
5.250	4.563	2.250	1.25-10	2.00-065	3C-3668J	D
4.469	3.938	2.000	1.25-16	1.75-065	2-40-971*	D
6.000	5.406	2.000	1.25-16	2.00-083	2-40-1741*	D
5.063	4.344	2.000	1.25-16	2.50-065	2-40-801	D
5.500	4.594	2.125	1.25-16	2.50-109	3C-6245J	D
6.313	5.375	2.000	1.25-16	3.00-065	2-40-1791*	D
6.125	5.188	2.500	1.37-10	2.50-083	4C-3666J	B
6.875	6.063	4.813	1.37-10	2.50-083	4C-4147J	D
6.125	5.188	2.500	1.37-10	2.50-109	4C-7780J	A
5.188	4.625	2.250	1.37-16	2.00-083	2-40-1031*	C
6.563	6.000	2.125	1.37-16	2.00-083	2-40-1841*	D
6.188	5.625	2.250	1.37-16	2.00-120	2-40-1701*	C
5.344	4.625	2.250	1.37-16	2.50-065	2-40-1041*	D
6.344	5.625	2.250	1.37-16	2.50-065	2-40-1811*	D
6.844	6.125	2.250	1.37-16	2.50-065	2-40-1291*	D
5.344	4.625	2.250	1.37-16	2.50-083	2-40-1131*	D
6.344	5.625	2.250	1.37-16	2.50-083	2-40-1711*	A
6.500	5.625	3.000	1.37-16	2.50-083	4C-26915J	D
7.531	6.813	2.250	1.37-16	2.50-083	2-40-1851*	B
6.344	5.625	2.250	1.37-16	2.50-109	2-40-1711-109*	D
6.438	5.625	2.250	1.37-16	2.75-065	2-40-1221-1*	D



Overall Length "B"	Length to Radius "C"	Length of Spline "D"	Spline Size	Tube Size "A"	Part Number	Rating
8.641	7.828	6.781	1.37-16	3.00-083	2-40-1871*	D
6.625	5.625	2.250	1.37-16	3.50-065	2-40-1671*	D
6.625	5.625	2.250	1.37-16	3.50-083	2-40-1531*	C
7.906	6.906	2.250	1.37-16	3.50-083	2-40-2041*	C
8.641	7.828	6.781	1.37-16	3.50-083	3-40-1871*	C
6.344	5.625	2.250	1.37-16	2.50-134	2-40-1711-134*	C
6.750	5.813	3.250	1.50-10	2.50-095	5C-3545J	B
10.500	9.750	8.500	1.50-10	2.50-109	5C-8873J	D
6.750	5.844	3.000	1.50-10	2.50-109	5C-5165J	A
8.500	7.750	6.500	1.50-10	2.50-109	5C-50-11200	D
7.125	5.875	3.000	1.50-10	3.00-095	5C-50-9970	D
7.625	6.750	5.500	1.50-10	3.00-095	5C-4150J	D
7.125	5.875	3.000	1.50-10	3.50-095	5C-11228J	D
7.125	5.875	3.000	1.50-10	3.50-156	7C-26226J	C
5.625	4.969	2.500	1.50-16	2.50-083	3-40-1471*	A
7.813	6.906	2.500	1.50-16	2.50-120	4C-4460	C
5.938	5.125	2.500	1.50-16	3.00-083	3-40-1101*	B
6.281	5.531	3.000	1.50-16	3.00-083	3-40-1511*	C
7.250	6.438	2.500	1.50-16	3.00-083	3-40-1611*	A
7.250	6.438	2.500	1.50-16	3.00-083	3-40-1611M*	D
7.406	6.594	3.000	1.50-16	3.00-083	3-40-1421*	B
7.406	6.594	3.000	1.50-16	3.00-095	141N-50-9960*	D
6.563	5.625	3.000	1.50-16	3.50-083	3-40-1531*	A
7.344	6.406	2.500	1.50-16	3.50-083	3-40-1561*	D
7.531	6.594	3.000	1.50-16	3.50-083	3-40-1491*	A
6.813	5.625	3.000	1.50-16	4.00-083	3-40-1541*	D
7.813	6.906	2.500	1.50-16	2.00-083	4C-50-6810*	D
6.375	5.375	3.000	1.56-16	2.50-109	5C-26561J	A
13.406	12.594	4.750	1.56-16	3.00-083	3-40-1711*	D
6.375	5.375	3.000	1.56-16	3.00-095	5C-50-7670*	B
6.375	5.375	3.000	1.56-16	3.00-120	5C-50-13530	D
6.750	5.813	3.000	1.56-16	3.50-083	3-40-1571*	A
6.938	5.813	3.000	1.56-16	3.50-083	3-40-1381*	D
6.750	5.813	3.000	1.56-16	3.50-095	3-40-1571-095*	B
6.688	5.375	3.000	1.56-16	4.00-083	5C-50-13060	D
7.000	6.000	3.000	1.75-10	3.00-095	6C-3670J	A
7.000	6.000	3.000	1.75-10	3.00-120	6C-50-2270	D
7.130	6.130	3.000	1.75-10	3.50-083	6C-50-14730	A
7.125	5.969	3.000	1.75-10	3.50-095	6C-9146J	A
7.938	7.000	3.000	1.75-10	3.50-095	6C-17233J	D



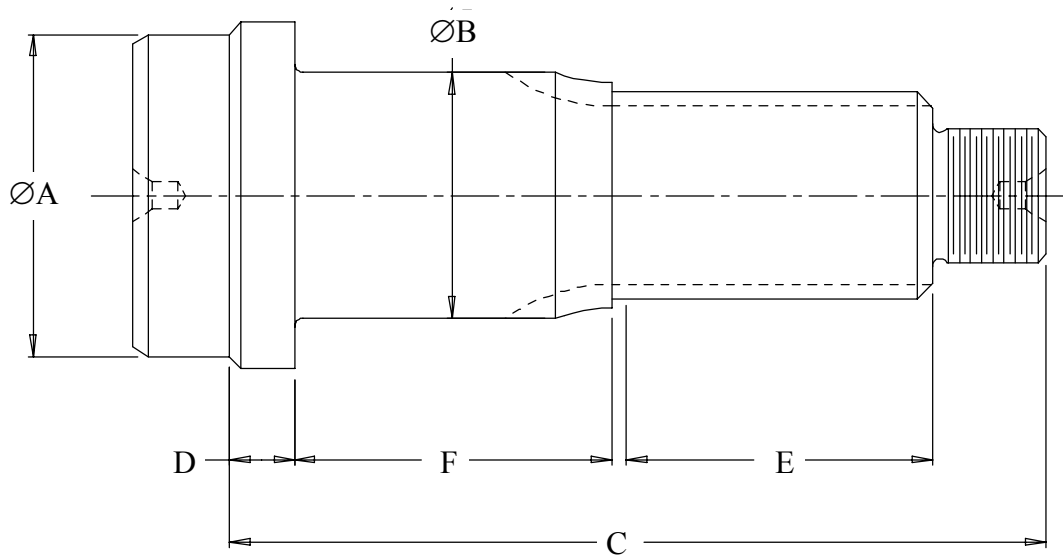
Overall Length "B"	Length to Radius "C"	Length of Spline "D"	Spline Size	Tube Size "A"	Part Number	Rating
9.625	8.594	7.375	1.75-10	3.50-095	6C-21371J	D
7.125	5.969	3.000	1.75-10	3.50-120	6C-13781J	D
9.625	8.625	7.375	1.75-10	3.50-120	6C-20873J	D
7.125	5.969	3.000	1.75-10	3.50-156	6C-25476J	D
7.125	6.000	3.000	1.75-10	3.50-250	6C-50-13760	D
7.250	5.938	3.000	1.75-10	4.00-083	6C-9147J	D
6.750	5.906	3.000	1.75-16	3.00-095	4-40-821	D
7.000	6.000	3.000	1.75-16	3.00-095	6C-26431J	B
9.750	8.750	3.000	1.75-16	3.00-095	6C-28330J	B
9.750	8.750	3.000	1.75-16	3.00-187	6C-28330J-187	C
7.000	6.000	3.000	1.75-16	3.00-187	6C-50-9950	C
7.130	5.970	3.000	1.75-16	3.50-095	50-15980	B
6.750	5.813	3.000	1.75-16	3.50-095	50NPS28-44	D
6.781	5.813	3.000	1.75-16	3.50-095	4-40-761	A
7.500	6.500	3.000	1.75-16	3.50-095	50NPS28-38	D
9.219	8.250	3.000	1.75-16	3.50-095	4-40-721	B
9.625	8.750	3.000	1.75-16	3.50-095	6C-17072J	B
6.781	5.812	3.000	1.75-16	3.50-134	4-40-761-134	B
7.250	6.000	3.000	1.75-16	4.00-083	7C-28609J	D
8.375	7.375	4.000	2.00-10	3.00-120	7C-2176J	D
9.250	8.375	7.125	2.00-10	3.00-187	7C-8319J	D
9.375	8.406	7.125	2.00-10	3.50-156	7C-50-14900	D
5.813	5.063	3.000	2.00-10	3.50-095	7C-50-15680	D
8.500	7.375	4.000	2.00-10	3.50-095	7C-9281J	B
9.375	8.406	7.125	2.00-10	3.50-095	7C-9276J	B
9.438	8.375	4.000	2.00-10	3.50-095	7C-17015J	D
8.000	7.125	3.500	2.00-10	3.50-120	7C-72NPS32-14	D
8.500	7.406	4.000	2.00-10	3.50-120	7C-10011J	B
9.438	8.500	4.000	2.00-10	3.50-120	7C-22898J	D
8.500	7.406	4.000	2.00-10	3.50-156	7C-50-4340	D
9.563	8.375	7.125	2.00-10	4.00-083	7C-11451J	D
8.625	7.375	4.000	2.00-10	4.00-109	7C-13451J	D
9.438	8.250	4.000	2.00-10	4.00-109	7C-17016J	D
9.563	8.313	7.125	2.00-10	4.00-109	7C-72NPS32-19	D
8.625	7.375	4.000	2.00-10	4.00-134	7C-50-13870	D
10.875	9.750	4.000	2.00-16	3.50-095	7C-18613J	D
8.000	7.250	3.500	2.00-16	3.50-095	6C-60NPS32-27	D
8.563	7.625	3.500	2.00-16	3.50-095	16N-40-471	D
9.563	8.656	3.500	2.00-16	3.50-095	16N-40-501	D
11.625	10.625	2.750	2.00-16	3.50-120	7C-50-8340	D



Overall Length "B"	Length to Radius "C"	Length of Spline "D"	Spline Size	Tube Size "A"	Part Number	Rating
8.500	7.375	4.000	2.00-16	3.50-120	7C-26434J	A
10.187	9.281	3.500	2.00-16	3.50-134	16N-40-1041	D
10.688	9.781	3.906	2.00-16	3.50-134	7C-72NPS32-96	B
7.563	6.656	3.500	2.00-16	3.50-134	16N-40-1191	D
8.500	7.375	4.000	2.00-16	3.50-134	7C-50-9990	A
8.563	7.656	3.500	2.00-16	3.50-134	16N-40-1151	A
9.688	8.781	3.500	2.00-16	3.50-134	16N-40-1011	B
8.500	7.375	4.000	2.00-16	3.50-156	7C-50-9660	B
8.563	7.781	3.500	2.00-16	3.50-156	16N-40-1121	D
9.844	8.781	3.500	2.00-16	4.00-134	16N-40-1051	C
3.156	2.750	1.594	2.25-10	3.00-095	3-40-731	D
10.344	9.500	4.000	2.50-10	3.50-156	17N-40-61	D
8.344	7.625	4.000	2.50-10	3.50-156	17N-40-51	D
10.000	8.750	4.000	2.50-10	4.00-109	8C-8021J	C
10.000	8.750	4.500	2.50-10	4.00-134	8C-82NPS40-17	C
12.750	11.625	9.375	2.50-10	4.00-134	8C-23330J	D
10.000	8.750	4.500	2.50-10	4.00-187	8C-16821J	D
10.500	8.750	4.500	2.50-10	4.25-259	8C-50-10930	D
9.250	8.375	4.000	2.50-16	3.50-156	17N-40-741	D
6.188	5.250	4.000	2.50-16	3.50-218	8.5C-50-8830	D
10.562	9.563	4.000	2.50-16	4.00-134	17N-40-521	A
9.250	8.250	4.000	2.50-16	4.00-134	17N-40-541	A
9.250	8.250	4.000	2.50-16	4.00-180	171N-50-2800	C
10.000	8.813	4.500	2.50-16	4.00-187	8C-26845J	D
10.656	9.469	4.000	2.50-16	4.50-134	17N-40-621	C
3.594	3.219	1.500	2.67-18	3.50-134	16N-40-1181	D
10.750	10.000	8.750	3.00-10	3.55-207	9C-92NPS48-21	D
9.188	8.422	4.500	3.00-10	3.55-207	18N-42-121	D
11.188	9.625	5.375	3.00-10	4.50-187	9C-11854J	C
11.250	10.031	4.500	3.00-16	4.50-134	18N-40-191	B
9.469	8.406	4.500	3.00-16	4.50-134	18N-40-201	B
11.188	9.688	5.375	3.00-16	4.50-250	9C-25806J	D
11.250	10.031	4.500	3.00-16	4.50-250	18N-40-191-250	D
11.250	10.031	4.500	3.00-16	4.50-259	18N-40-191-259	B
11.531	10.219	4.500	3.00-16	4.50-259	185N-40-101	D
9.469	8.406	4.500	3.00-16	4.50-259	18N-40-201-259	B
9.906	8.594	4.500	3.00-16	4.50-259	185N-40-91	D
4.250	3.828	2.500	3.25-18	3.50-156	17N-40-181	D



Bearing Stubs



Bearing Diameter "B"	Length to Weld "C"	Length to Shoulder "D"	Spline Length "E"	Bearing Length "F"	Spline Size	Tube Size "A"	Thread	Part Number	Rating
1.5000	4.000	3.188	1.812	1.812	1.37-10	3.00-.095	1.00-20EXT	52-15860	D
1.3750	3.750	1.063	1.688	1.000	1.37-10	2.50-.065	.625-18EXT	2-53-331	D
1.3750	3.750	1.063	1.688	1.000	1.37-10	2.50-.083	.500-20EXT	2-53-1191	D
1.3750	4.000	1.344	1.688	0.968	1.37-10	3.00-.083	1.00-20EXT	3-54-611	C
1.5000	3.500	0.313	1.375	1.812	1.37-10	2.50-.095	1.00-20EXT	5C-26309J	D
1.5000	6.969	2.250	2.000	2.000	1.50-10	3.00-.083	1.00-20EXT	3-54-481	D
1.5000	6.969	2.250	2.000	2.000	1.50-10	3.50-.083	1.00-20EXT	3-54-H661	D
1.5625	4.031	1.063	1.875	1.000	1.50-10	3.00-.095	1.00-20EXT	4-53-361	B
1.5625	4.406	1.406	1.844	1.156	1.50-10	3.50-.083	1.00-20EXT	3-53-421	D
1.5625	3.875	1.125	1.813	0.937	1.50-10	3.50-.083	1.00-20EXT	3-53-1081	A
1.5750	4.031	1.093	2.000	1.000	1.50-10	2.50-.150	1.00-20EXT	7C-53-13850	C
1.7500	7.906	2.593	2.250	1.750	1.75-10	3.00-.095	1.25-12EXT	6C-5814J	D



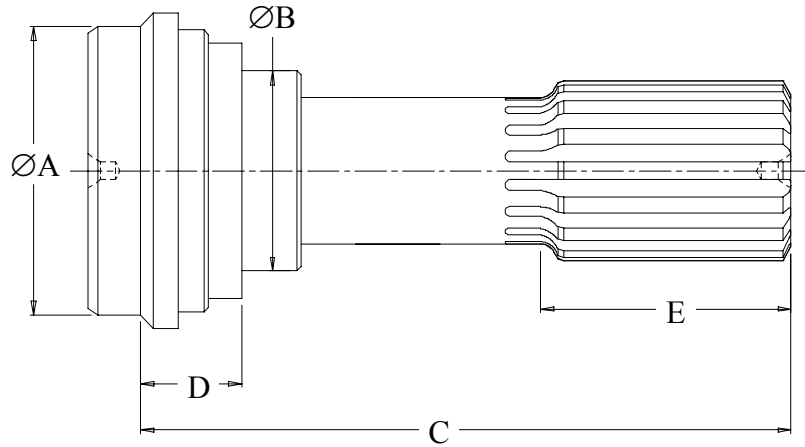
Bearing Diameter "B"	Length to Weld "C"	Length to Shoulder "D"	Spline Length "E"	Bearing Length "F"	Spline Size	Tube Size "A"	Thread	Part Number	Rating
1.7500	8.063	2.781	2.250	1.750	1.75-10	3.50-095	1.25-18EXT	7C-9283J	C
1.7656	7.781	0.500	2.469	3.940	1.50-10	2.50-095	1.00-20EXT	5C-52-4798	D
1.7656	4.531	1.281	2.000	0.460	1.75-10	3.50-095	.875-14INT	7C-10504J	D
1.7656	4.344	1.219	2.063	1.188	1.75-10	3.50-134	1.25-18EXT	16N-53-141	B
1.7656	4.531	1.281	2.000	0.812	1.75-10	4.00-109	.875-14INT	7C-16728J	D
1.7656	4.344	1.094	2.281	0.969	1.75-10	4.00-134	1.25-18EXT	16N-53-171	D
1.9687	4.438	1.563	1.938	0.940	1.96-10	3.50-156	1.25-18EXT	17N-54-251	D
1.9687	5.313	1.094	2.875	1.060	1.96-10	3.50-156	1.25-18EXT	17N-53-151	A
1.9687	5.313	1.094	2.875	1.060	1.96-10	4.00-134	1.25-18EXT	17N-53-201	C
2.0000	8.063	3.750	2.188	2.130	1.75-10	3.50-156	1.00-20EXT	7C-51-13750	D
2.0000	6.250	1.000	1.750	3.500	1.75-10	3.00-095	1.25-18EXT	6C-52-5250	C
2.0000	8.375	0.875	2.188	5.310	1.75-10	3.50-120	1.25-18EXT	7C-52-5840	C
2.0000	8.375	1.750	2.125	4.700	1.96-10	3.50-120	1.25-18EXT	8C-25940J	D
2.0000	8.375	0.875	2.188	5.310	1.96-10	3.50-120	1.25-18EXT	7C-52-9770	D
2.0000	5.000	1.300	3.250	0.800	2.00-.38K	3.50-120	0.50-20INT	7C-51-7440	D
2.1562	5.438	0.500	2.000	2.940	2.00-10	3.00-095	1.25-18EXT	6C-52-4808	D
2.1718	7.719	3.156	2.625	1.937	2.00-10	3.50-156	1.25-18EXT	17N-54-281	D
2.1719	6.844	2.594	2.875	1.375	2.00-10	4.00-134	1.25-18EXT	17N-53-331	C
2.1875	7.375	1.000	2.375	4.000	2.00-10	3.00-095	1.25-18EXT	6C-52-4010	D
2.3594	5.313	1.313	2.625	1.250	2.34-46	4.06-165	1.25-18EXT	176N-53-21	D



Bearing Diameter "B"	Length to Weld "C"	Length to Shoulder "D"	Spline Length "E"	Bearing Length "F"	Spline Size	Tube Size "A"	Thread	Part Number	Rating
2.3750	5.281	1.531	2.563	1.188	2.25-10	3.50-156	1.25-18EXT	17N-54-261	D
2.3750	5.313	1.313	2.625	1.250	2.34-16	4.00-134	1.25-18EXT	17N-53-311	C
2.3750	5.313	1.313	2.625	1.250	2.34-16	4.50-134	1.25-18EXT	18N-53-91	C
2.3750	5.313	1.313	2.625	1.250	2.34-16	4.50-259	1.25-18EXT	18N-53-91-259	C
2.4375	7.438	0.500	2.250	4.690	2.00-10	3.50-120	1.25-18EXT	7C-52-4918	D
2.4375	7.500	0.500	1.875	4.120	2.00-10	3.50-120	1.25-18EXT	7C-52-4400	D
2.4375	7.250	1.250	1.875	4.130	2.00-31	3.50-120	1.25-18EXT	7C-28785J	B
2.6875	7.625	0.500	2.875	4.250	2.50-10	4.00-134	1.25-18EXT	8.5C-52-4470	C
2.9375	8.875	0.359	2.750	4.505	2.35-46	3.50-120	1.25-18EXT	7C-51-9050	A
3.0000	7.938	0.750	2.313	4.880	2.50-10	4.50-259	1.28-18EXT	9C-52-4878	D



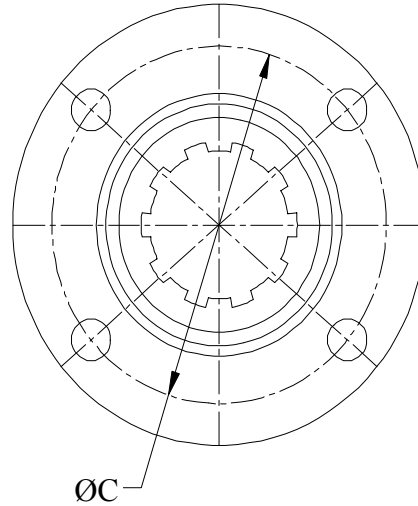
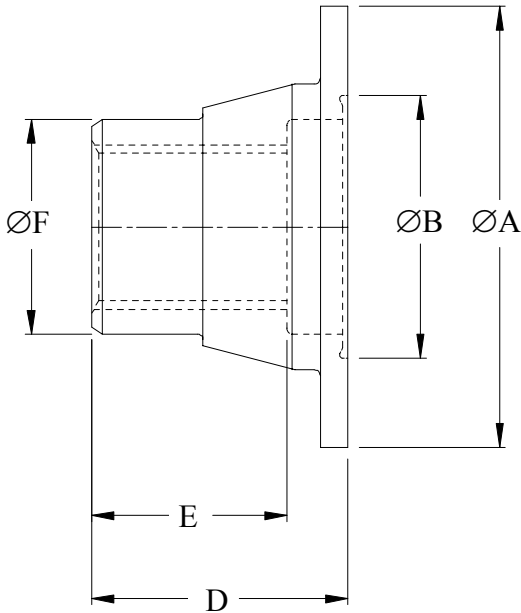
Slip Bearing Stubs



Bearing Diameter "B"	Length to Weld "C"	Length to Shoulder "D"	Spline Length "E"	Spline Size	Tube Size "A"	Part Number	Rating
1.3750	7.031	1.063	4.438	1.37-16	2.50-083	3-53-211	D
1.3750	8.000	1.063	5.406	1.37-16	3.00-083	2-53-501	D
1.3750	8.844	1.063	2.500	1.37-16/15	3.00-083	2-53-711	D
1.3750	8.813	1.344	3.500	1.37-32/31	3.00-083	3-53-1181	D
1.3750	8.813	1.344	3.516	1.37-32/31	3.50-083	3-53-1301	D
1.5625	10.156	1.125	7.531	1.50-16	3.00-083	3-53-1481	D
1.5625	7.063	1.125	4.438	1.50-16	3.00-083	3-53-1031	D
1.5625	7.063	1.125	4.438	1.50-16	3.50-083	3-53-1121	D
1.5625	8.531	1.063	5.938	1.56-16	3.50-083	3-53-451	D
1.7656	8.563	1.094	5.938	1.75-16	3.50-095	4-53-61	D



Companion Flanges



* = Tapered Bore

Style

F = Female

M = Male

Surface

Turned = Max. 125 micro finish

Polished = 10-20 micro finish

Ground = 10-20 micro finish

with no lead on surface

Series	O.D. "A"	Pilot "B"	Type	B.C. "C"	# of Holes	Hole Size	Spline/Bore & Keyway	Overall "D"	Thru "E"	Hub "F"	Style	Part Number	Rating
1100	3.500	2.250	F	2.750	4	.313	1.00-.25K	2.125	1.500	1.8750	T	1-1-143	D
1310	3.875	2.375	F	3.125	4	3/8	0.750	2.000		2.4380	T	31SF-SRB	A
1310	3.875	2.375	F	3.125	4	3/8	1.00-1/4	2.000		2.4380	T	31SF-1.00-25	B
1310	3.875	2.375	F	3.125	4	3/8	1 1/8-1/4	2.000		2.4380	T	31SF-1.12-25	A
1310	3.875	2.375	F	3.125	4	3/8	1 1/4-1/4	2.000		2.4380	T	31SF-1.25-25	B
1310	3.875	2.375	F	3.125	4	3/8	1 1/4-5/16	2.000		2.4380	T	31SF-1.25-31	A
1310	3.875	2.375	F	3.125	4	3/8	1 3/8-5/16	2.000		2.4380	T	31SF-1.37-31	B
1310	3.875	2.375	F	3.125	4	3/8	1 3/8-3/8	2.000		2.4380	T	31SF-1.37-37	C
1310	3.875	2.375	F	3.125	4	3/8	1 7/16-3/8	2.000		2.4380	T	31SF-1.43-37	C
1310	3.875	2.375	F	3.125	4	3/8	1 1/2-3/8	2.000		2.4380	T	31SF-1.50-37	A



Series	O.D. "A"	Pilot "B"	Type	B.C. "C"	# of Holes	Hole Size	Spline/ Bore & Keyway	Overall "D"	Thru "E"	Hub "F"	Style	Part Number	Rating
1310	3.875	2.375	F	3.125	4	3/8	1 5/8- 3/8	2.000		2.4380	T	31SF- 1.62-37	A
1310	3.875	2.375	F	3.125	4	3/8	1 11/16- 3/8	2.000		2.4380	T	31SF- 1.68-37	D
1310	3.875	2.375	F	3.125	4	3/8	1 3/4- 3/8	2.500		2.4380	T	31SLF- 1.75-37	C
1310	3.875	2.375	F	3.125	4	3/8	1 3/4- 1/2	2.500		2.4380	T	31SLF- 1.75-50	D
1310	3.875	2.375	F	3.125	4	3/8	1 7/8- 3/8	2.500		2.4380	T	31SLF- 1.87-37	C
1310	3.875	2.375	F	3.125	4	3/8	1 7/8- 1/2	2.500		2.4380	T	31SLF- 1.87-50	B
1310	3.875	2.375	F	3.125	4	3/8	2-1/2	2.500		2.4380	T	31SLF- 2.00-50	C
1310	3.875	2.375	F	3.125	4	3/8	2 1/8- 5/8	2.500		2.4380	T	31SLF- 2.12-62	C
1310	3.875	2.375	F	3.125	4	3/8	2 1/4- 1/2	2.500		2.4380	T	31SLF- 2.25-50	D
1310	3.875	2.375	F	3.125	4	3/8	2 1/4- 5/8	2.500		2.4380	T	31SLF- 2.25-62	C
1310	3.875	2.375	F	3.125	4	3/8	2 3/8- 5/8	2.500		2.4380	T	31SLF- 2.37-62	C
1310	3.875	2.375	F	3.125	4	3/8	1.250	2.500		2.4380	T	31SLF- LRB	A
1310	3.938	2.375	F	3.125	4	.375	0.63- .18K	2.000	2.000	2.4375	T	131N-20- 12460	D
1310	3.938	2.375	F	3.125	4	.375	0.75- .18K	2.063	1.500	1.8750	T	131N-1- 263	D
1310	3.875	2.375	F	3.125	4	.375	0.87- 13	2.000	1.543	2.4375	T	131N-20- 13420	D
1310	3.875	2.375	F	3.125	4	.375	1.00- .25K	2.000	2.000	2.4375	T	2-1-1313- 1	D
1310	3.875	2.375	F	3.125	4	.375	1.00- .25K	2.000	2.000	2.4375	T	131N-20- 9430	D
1310	3.875	2.375	F	3.125	4	.375	1.00- .25K	2.063	1.500	1.8750	T	2-1-283	D
1310	3.875	2.375	F	3.125	4	3/8- 24	1.12- .25K	2.500	2.438	3.8750	T	131N-20- 12740	D
1310	3.875	2.375	F	3.125	4	.375	1.25- .25K	2.000	2.000	2.4375	T	2-1-1313- 3	D



Series	O.D. "A"	Pilot "B"	Type	B.C. "C"	# of Holes	Hole Size	Spline/ Bore & Keyway	Overall "D"	Thru "E"	Hub "F"	Style	Part Number	Rating
1310	4.000	2.375	F	3.125	4	3/8- 24	1.25- .25K	2.500	2.438	4.0000	T	131N-20- 12690	D
1310	3.875	2.375	F	3.125	4	.375	1.25- .31K	2.063	1.500	1.8750	T	2-1-333	D
1310	3.875	2.375	F	3.125	4	.375	1.43- .37K	2.000	2.000	2.4375	T	2-1-1313- 7	D
1310	3.875	2.375	F	2.438	4	.375	1.43- .37K	2.000	2.000	2.4375	T	131N-20- 9440	D
1310	3.880	2.375	F	3.125	4	.377	1.50- .31K	2.000	1.922	2.4400	T	131N-20- 16560	D
1310	3.875	2.375	F	3.125	4	.375	1.50- .37K	2.000	2.000	2.4375	T	2-1-1313- 8	D
1310	3.875	2.375	F	2.438	4	.375	1.50- .37K	2.000	2.000	2.4380	T	131N-20- 9460	D
1310	3.875	2.375	F	3.125	4	.391	1.50- 10	2.313	1.780	2.2090	G	131N-20- 5680	D
1310	4.062	2.750	F	3.750	4	.438	1.63- .31K	3.438	2.625	2.8750	T	131N-20- 8570	D
1310	3.875	2.375	F	3.125	4	.406	1.75- 13	2.375	2.281	--	T	131N-20- 12900	D
1310	4.000	2.375	F	3.125	4	3/8- 24	1.87- .50K	2.625	2.375	2.4380	T	131N-20- 8571	D
1310	3.938	2.375	F	3.125	4	3/8- 24	1.94- .50K	2.000	2.000	3.8750	T	131N-20- 12450	D
1310	3.875	2.375	F	3.125	4	.375	2.12- .50K	2.500	2.500	3.8750	T	2-1-1323- 5	D
1350	4.625	2.750	F	3.750	4	.438	1.00	3.438	2.625	2.8750	T	3-1-303	D
1350	4.562	2.750	F	3.750	4	7/16	1.000	2.000		2.8750	T	35SF- SRB	A
1350	4.562	2.750	F	3.750	4	7/16	1-1/4	2.000		2.8750	T	35SF- 1.00-25	C
1350	4.562	2.750	F	3.750	4	7/16	1 1/8- 1/4	2.000		2.8750	T	35SF- 1.12-25	A
1350	4.562	2.750	F	3.750	4	7/16	1 1/4- 1/4	2.000		2.8750	T	35SF- 1.25-25	C
1350	4.562	2.750	F	3.750	4	7/16	1 1/4- 5/16	2.000		2.8750	T	35SF- 1.25-31	A
1350	4.562	2.750	F	3.750	4	7/16	1 3/8- 5/16	2.000		2.8750	T	35SF- 1.37-31	B



Series	O.D. "A"	Pilot "B"	Type	B.C. "C"	# of Holes	Hole Size	Spline/ Bore & Keyway	Overall "D"	Thru "E"	Hub "F"	Style	Part Number	Rating
1350	4.562	2.750	F	3.750	4	7/16	1 3/8- 3/8	2.000		2.8750	T	35SF- 1.37-37	B
1350	4.562	2.750	F	3.750	4	7/16	1 7/16- 3/8	2.000		2.8750	T	35SF- 1.43-37	B
1350	4.562	2.750	F	3.750	4	7/16	1 1/2- 3/8	2.000		2.8750	T	35SF- 1.50-37	A
1350	4.562	2.750	F	3.750	4	7/16	1 5/8- 3/8	2.000		2.8750	T	35SF- 1.62-37	A
1350	4.562	2.750	F	3.750	4	7/16	1 11/16- 3/8	2.000		2.8750	T	35SF- 1.68-37	D
1350	4.562	2.750	F	3.750	4	7/16	1 3/4- 3/8	2.000		2.8750	T	35SF- 1.75-37	A
1350	4.562	2.750	F	3.750	4	7/16	1 3/4- 1/2	2.000		2.8750	T	35SF- 1.75-50	B
1350	4.562	2.750	F	3.750	4	7/16	1 7/8- 3/8	2.000		2.8750	T	35SF- 1.87-37	A
1350	4.562	2.750	F	3.750	4	7/16	1 7/8- 1/2	2.000		2.8750	T	35SF- 1.87-50	A
1350	4.562	2.750	F	3.750	4	7/16	2-1/2	2.500		2.8750	T	35SLF- 2.00-50	A
1350	4.562	2.750	F	3.750	4	7/16	2 1/8- 5/8	2.500		2.8750	T	35SLF- 2.12-62	A
1350	4.562	2.750	F	3.750	4	7/16	2 1/4- 1/2	2.500		2.8750	T	35SLF- 2.25-50	B
1350	4.562	2.750	F	3.750	4	7/16	2 1/4- 5/8	2.500		2.8750	T	35SLF- 2.25-62	A
1350	4.562	2.750	F	3.750	4	7/16	2 3/8- 5/8	2.500		2.8750	T	35SLF- 2.37-62	C
1350	4.562	2.750	F	3.750	4	7/16	2 7/16- 5/8	2.500		2.8750	T	35SLF- 2.43-62	C
1350	4.562	2.750	F	3.750	4	7/16	2 1/2- 5/8	2.500		2.8750	T	35SLF- 2.50-62	B
1350	4.562	2.750	F	3.750	4	7/16	2 3/4- 5/8	2.500		2.8750	T	35SLF- 2.75-62	D
1350	4.562	2.750	F	3.750	4	7/16	1.500	2.500		2.8750	T	35SLF- LRB	A
1350	4.625	2.750	F	3.750	4	.438	1.18-6	2.000	1.469	1.6920	P	135N-20- 8300	D



Series	O.D. "A"	Pilot "B"	Type	B.C. "C"	# of Holes	Hole Size	Spline/ Bore & Keyway	Overall "D"	Thru "E"	Hub "F"	Style	Part Number	Rating
1350	4.625	2.750	F	3.750	4	.438	1.25- .31K	2.563	2.000	2.2500	T	3-1-163	D
1350	4.625	2.750	F	3.750	4	.438	1.25- .31K	2.438	1.500	2.1250	G	3-1-604*	D
1350	4.625	2.750	F	3.750	4	.438	1.37- 10	2.438	2.000	2.1250	G	3-1-751	D
1350	4.625	2.750	F	3.750	4	.438	1.37- 10	2.688	2.000	2.0000	T	141N-20- 12370	D
1350	4.625	2.750	F	3.750	4	.438	1.37- 10	2.688	2.000	2.1250	T	141N-20- 12380	D
1350	4.625	2.750	F	3.750	4	.438	1.40- 32	2.500	2.000	2.1250	P	135N-20- 12560	D
1350	4.625	2.750	F	3.750	4	.453	1.50- .37	3.060	2.190	2.2500	G	135N-20- 7030*	D
1350	4.563	2.750	F	3.750	4	.438	1.50- .37K	2.000	2.000	2.8750	T	3-1-1013- 8	D
1350	4.625	2.750	F	3.750	4	.438	1.50- 10	2.250	1.750	2.1875	G	135N-20- 15320	C
1350	4.625	2.750	F	3.750	4	.438	1.50- 10	2.438	2.000	2.1250	G	3-1-2431	D
1350	4.625	2.750	F	3.750	4	.438	1.50- 10	2.563	2.000	2.1250	G	3-1-2181	D
1350	4.625	2.750	F	3.750	4	.438	1.50- 10	2.563	2.000	2.1250	G	3-1-1151	A
1350	4.625	2.750	F	3.750	4	.453	1.50- 10	2.625	1.750	2.2550	G	135N-20- 4520	D
1350	4.625	2.750	F	3.750	4	.438	1.50- 10	2.688	2.000	2.1875	T	135N-20- 13110	B
1350	4.625	2.750	F	3.750	4	.453	1.50- 10	3.060	2.188	2.2550	G	135N-20- 0350	D
1350	4.563	2.750	F	3.750	4	.438	1.50- 17	2.000	1.934	2.8750	T	135N-20- 15270	D
1350	4.625	2.750	F	3.750	4	.438	1.75- .37K	3.438	2.625	2.8750	T	135N-20- 9900	D
1350	4.625	2.750	F	3.750	4	.438	1.75- 10	2.438	2.000	2.6250	G	3-1-3571	D
1350	4.625	2.750	F	3.750	4	.438	1.75- 10	2.813	2.188	2.2500	G	3-1-3211	D



Series	O.D. "A"	Pilot "B"	Type	B.C. "C"	# of Holes	Hole Size	Spline/ Bore & Keyway	Overall "D"	Thru "E"	Hub "F"	Style	Part Number	Rating
1350	4.625	2.750	F	3.750	4	.438	1.75-10	2.875	2.250	2.5000	T	3-1-3111	C
1350	4.625	2.750	F	3.750	4	.438	1.75-10	2.875	2.250	2.5000	G	3-1-3121X	C
1350	4.625	2.750	F	3.750	4	.438	1.75-10	3.125	2.250	2.6250	G	3-1-1521	D
1350	4.563	2.750	F	3.750	4	7/16-20	2.25-.50K	3.000	3.000	4.5625	T	3-1-1023-10	D
1350	4.563	2.750	F	4.750	4	.438	1.37-.37K	2.563	2.000	2.2500	G	3-1-584*	D
1350	4.562	2.750	F	3.750	4	.438	1.75-.37K	3.438	2.625	2.8750	T	3-1-463M	D
1410	5.875	3.750	F	4.750	4	.500	1.37-10	2.625	2.000	2.1090	G	4-1-3151	D
1410	5.875	3.750	F	4.750	4	.500	1.50-10	2.500	2.000	2.250	G	148N-1-3441	D
1410	5.875	3.750	F	4.750	4	.500	1.50-10	2.625	2.000	2.1250	G	4-1-2701	D
1480	5.875	3.750	F	4.750	4	1/2	1.250	2.500		3.7500		48SF-SRB	A
1480	5.875	3.750	F	4.750	4	1/2	1 1/2-3/8	2.500		3.7500		48SF-1.50-37	B
1480	5.875	3.750	F	4.750	4	1/2	1 5/8-3/8	2.500		3.7500		48SF-16.2-37	C
1480	5.875	3.750	F	4.750	4	1/2	1 11/16-3/8	2.500		3.7500		48SF-1.68-37	C
1480	5.875	3.750	F	4.750	4	1/2	1 3/4-3/8	2.500		3.7500		48SF-1.75-37	B
1480	5.875	3.750	F	4.750	4	1/2	1 3/4-1/2	2.500		3.7500		48SF-1.75-50	D
1480	5.875	3.750	F	4.750	4	1/2	1 7/8-3/8	2.500		3.7500		48SF-1.87-37	A
1480	5.875	3.750	F	4.750	4	1/2	1 7/8-1/2	2.500		3.7500		48SF-1.87-50	B
1480	5.875	3.750	F	4.750	4	1/2	2-1/2	2.500		3.7500		48SF-2.00-50	A
1480	5.875	3.750	F	4.750	4	1/2	2 1/8-5/8	2.500		3.7500		48SF-2.12-62	C



Series	O.D. "A"	Pilot "B"	Type	B.C. "C"	# of Holes	Hole Size	Spline/ Bore & Keyway	Overall "D"	Thru "E"	Hub "F"	Style	Part Number	Rating
1480	5.875	3.750	F	4.750	4	1/2	2 1/4- 1/2	2.500		3.7500		48SF- 2.25-50	B
1480	5.875	3.750	F	4.750	4	1/2	2 1/4- 5/8	2.500		3.7500		48SF- 2.25-62	A
1480	5.875	3.750	F	4.750	4	1/2	2 3/8- 5/8	2.500		3.7500		48SF- 2.37-62	C
1480	5.875	3.750	F	4.750	4	1/2	2 7/16- 5/8	2.500		3.7500		48SF- 2.43-62	A
1480	5.875	3.750	F	4.750	4	1/2	2 1/2- 5/8	3.000		3.7500		48SLF- 2.50-62	A
1480	5.875	3.750	F	4.750	4	1/2	2 3/4- 5/8	3.000		3.7500		48SLF- 2.75-62	C
1480	5.875	3.750	F	4.750	4	1/2	2 15/16- 3/4	3.000		3.7500		48SLF- 2.93-75	D
1480	5.875	3.750	F	4.750	4	1/2	3-3/4	3.000		3.7500		48SLF- 3.00-75	C
1480	5.875	3.750	F	4.750	4	1/2	3 1/2- 7/8	3.000		3.7500		48SLF- 3.50-87	D
1480	5.875	3.750	F	4.750	4	1/2	1.500	3.000		3.7500		48SLF- LRB	A
1550	5.750	3.750	M	4.750	4	.500	1.517- 35	2.500	2.000	2.1250	G	155N-20- 14320	D
1550	5.750	3.750	M	4.750	4	.500	1.52- 35	2.500	2.000	2.5000	P	155N-20- 13640	D
1410	5.875	3.750	F	4.750	4	.500	1.62- 10	2.750	2.125	2.3750	G	4-1-2751	D
1550	5.875	3.750	F	4.750	4	.500	1.75- 10	2.688	2.063	2.5000	T	155N-20- 13430	D
1550	5.750	3.750	M	4.750	4	.500	1.78- 34	2.500	2.000	2.5000	G	155N-20- 14260	D
1550	5.750	3.750	M	4.750	4	.500	1.79- 34	3.313	2.250	2.5000	G	155N-20- 15470	C
1550	5.750	3.750	F	4.750	4	.500	1.79- 34	2.500	2.000	2.5000	G	155N-20- 16720	B
1410	5.750	3.750	F	4.750	4	.500	2.00- 10	3.625	3.000	2.9375	G	4-1-2361	D
1480	5.875	3.750	F	4.750	4	.500	2.00-6	3.625	2.250	3.0030	P	148N-1- 720W	D



Series	O.D. "A"	Pilot "B"	Type	B.C. "C"	# of Holes	Hole Size	Spline/ Bore & Keyway	Overall "D"	Thru "E"	Hub "F"	Style	Part Number	Rating
1550	5.875	3.750	F	4.750	4	.500	2.16- .63K	3.500	3.500	3.7500	T	155N-20- 12280	D
1410	5.875	3.750	F	4.750	4	.500	2.25- 10	2.625	2.000	2.7968	G	4-1-2591	D
1550	5.875	3.750	F	4.750	4	.500	2.25- 10	3.688	3.000	3.5000	G	155N-20- 12270	D
1610	6.875	6.625	F	6.125	8	.375	1.25	3.500	3.500	5.2500	T	16N-1- 873	D
1610	6.875	6.625	F	6.125	8	.388	1.271- 19	2.560	1.440	1.9000	T	161N-20- 15640	D
1610	6.875	6.625	M	6.125	8	.375	1.50- 10	2.750	2.063	2.2500	T	16N-20- 13500	D
1610	6.875	6.625	F	6.125	8	.375	1.50- 10	2.750	2.063	2.2500	G	16N-1- 1291	D
1610	6.875	6.625	F	6.125	8	.375	1.50- 10	2.938	2.188	2.1250	G	16N-20- 6960	D
1610	6.875	6.625	F	6.125	8	.375	1.75- 10	2.813	2.250	3.0000	G	16N-1- 611	D
1610	6.875	6.625	F	6.125	8	.375	1.75- 10	2.938	2.188	2.2500	G	16N-20- 6950	D
1610	6.875	6.625	F	6.125	8	.375	1.75- 10	2.938	2.250	2.7500	G	16N-1- 2321	D
1610	6.875	6.625	F	6.125	8	.375	1.78- 34	4.250	2.781	2.5625	G	16N-1- 5121X	D
1610	6.880	6.625	F	6.125	8	.388	1.96- 10	3.000	2.250	2.5000	G	161N-20- 16200	D
1610	6.875	6.625	F	6.125	8	.375	1.96- 10	3.000	2.250	2.5000	G	16N-1- 4291	D
1610	6.875	6.625	F	6.125	8	.375	2.00- 10	3.625	3.000	2.7500	G	16N-1- 3141	D
1610	6.875	6.625	F	6.125	8	.375	2.12- .50K	3.500	3.500	5.2500	T	16N-1- 873-2	D
1610	6.875	6.625	F	6.125	8	.375	2.14- 41	3.750	2.500	2.9400	P	16N-20-1	C
1610	6.875	6.625	F	6.125	8	.375	2.21-6	4.469	3.250	3.0000	G	16N-1- 2211	D
1610	6.875	6.625	M	6.125	8	.375	2.22-6	3.875	3.250	3.0000	G	16N-1- 2541	D
1610	6.875	6.625	F	6.125	8	.375	2.25- 10	3.625	3.000	3.5050	P	16N-1- 1581	D



Series	O.D. "A"	Pilot "B"	Type	B.C. "C"	# of Holes	Hole Size	Spline/ Bore & Keyway	Overall "D"	Thru "E"	Hub "F"	Style	Part Number	Rating
1610	6.875	6.625	F	6.125	8	.375	2.44- .63K	3.500	3.500	5.2500	T	16N-1- 873-5	D
1610	6.875	6.625	F	6.125	8	.388	2.75- 10	3.680	3.000	3.5000	T	161N-20- 16100	D
1610	6.875	6.625	F	6.125	8	.375	2.75- 10	3.688	3.000	3.5000	T	16N-20- 12240	D
1610	6.875	6.625	F	6.125	8	.375	2.94- .63K	3.500	3.406	5.2500	T	16N-20- 12190	C
1610	6.875	6.625	F	6.125	8	3/8	1.250	3.500		5.2500		61SF- SRB	A
1610	6.875	6.625	F	6.125	8	3/8	2-1/2	3.500		5.2500		61SF- 2.00-50	C
1610	6.875	6.625	F	6.125	8	3/8	2 1/8- 5/8	3.500		5.2500		61SF- 2.12-62	D
1610	6.875	6.625	F	6.125	8	3/8	2 1/4- 1/2	3.500		5.2500		61SF- 2.25-50	D
1610	6.875	6.625	F	6.125	8	3/8	2 1/4- 5/8	3.500		5.2500		61SF- 2.25-62	B
1610	6.875	6.625	F	6.125	8	3/8	2 3/8- 5/8	3.500		5.2500		61SF- 2.37-62	D
1610	6.875	6.625	F	6.125	8	3/8	2 7/16- 5/8	3.500		5.2500		61SF- 2.43-62	B
1610	6.875	6.625	F	6.125	8	3/8	2 1/2- 5/8	3.500		5.2500		61SF- 2.50-62	C
1610	6.875	6.625	F	6.125	8	3/8	2 3/4- 5/8	3.500		5.2500		61SF- 2.75-62	D
1610	6.875	6.625	F	6.125	8	3/8	2 15/16- 3/4	3.500		5.2500		61SF- 2.93-75	C
1610	6.875	6.625	F	6.125	8	3/8	3-3/4	3.500		5.2500		61SF- 3.00-75	B
1610	6.875	6.625	F	6.125	8	3/8	3 1/2- 7/8	4.000		5.2500		61SLF- 3.50-87	C
1610	6.875	6.625	F	6.125	8	3/8	3 15/16- 1	4.000		5.2500		61SLF- 3.93-10	D
1610	6.875	6.625	F	6.125	8	3/8	4-1	4.000		5.2500		61SLF- 4.00-10	D
1610	6.875	6.625	F	6.125	8	3/8	1.250	4.000		5.2500		61SLF- LRB	C



Series	O.D. "A"	Pilot "B"	Type	B.C. "C"	# of Holes	Hole Size	Spline/ Bore & Keyway	Overall "D"	Thru "E"	Hub "F"	Style	Part Number	Rating
1710	8.000	7.750	F	7.250	8	.375	1.25	4.000	4.000	6.3750	T	17N-20-11760	D
1710	8.000	7.750	F	7.250	8	.375	1.53-14	4.250	2.000	3.0000	T	17N-20-3070	D
1710	8.000	7.750	F	7.250	8	.375	1.78-10	3.906	2.750	2.5625	G	17N-1-4701X	D
1710	8.000	7.750	F	7.250	8	.375	2.00-.50K	3.688	3.000	3.2500	G	17N-1-1144*	C
1710	8.000	7.750	F	7.250	8	.375	2.00-10	3.250	2.563	2.7500	G	17N-1-2791	D
1710	8.000	7.750	F	7.250	8	.375	2.00-10	3.438	2.250	2.7500	G	17N-20-7150	C
1710	8.000	7.750	F	7.250	8	.375	2.00-10	3.688	3.000	2.7500	G	17N-1-2221	C
1710	8.000	7.750	F	7.250	8	.375	2.00-10	3.688	3.000	2.9450	G	17N-20-7610	D
1710	8.000	7.750	F	7.250	8	.375	2.25-.56K	3.688	3.000	3.5546	G	17N-1-1074*	D
1710	8.000	6.438	M	7.250	8	3/8-24	2.25-10	4.969	3.000	3.5000	G	17N-1-4131	D
1710	8.000	7.750	F	7.250	8	.375	2.25-10	3.688	3.000	3.5000	G	17N-1-951	D
1710	8.000	7.750	F	7.250	8	.375	2.25-10	4.438	3.625	3.0000	G	17N-1-4301	D
1710	8.000	7.750	F	7.250	8	.375	2.39-46	4.594	3.375	3.5000	G	17N-1-4671	D
1710	8.000	7.750	F	7.250	8	.377	2.50-10	3.620	2.410	3.5000	G	17N-20-14120	D
1710	8.000	7.750	F	7.250	8	.375	2.68-.62K	4.000	4.000	6.3750	T	17N-20-8530	D
1710	8.000	7.750	F	7.250	8	.453	2.68-.75K	3.906	3.906	6.3750	T	17N-20-4100	D
1710	8.000	7.750	F	7.250	8	.375	2.75-10	3.688	3.000	3.5000	G	17N-20-2320	D
1710	8.000	8.000	M	7.250	8	.375	2.75-10	3.688	3.000	3.5000	G	17N-1-2381	D
1710	8.000	7.750	F	7.250	8	.375	3.93-.75K	4.000	4.000	6.3750	T	17N-20-8540	D
1710	8.000	7.750	F	7.250	8	.375	3.93-1.00K	4.000	4.000	6.3750	T	17N-20-8550	D



Series	O.D. "A"	Pilot "B"	Type	B.C. "C"	# of Holes	Hole Size	Spline/ Bore & Keyway	Overall "D"	Thru "E"	Hub "F"	Style	Part Number	Rating
1710	8.000	7.750	F	7.250	8	.375	3.93	4.000	4.000	6.3750	T	17N-20-11770	D
1710	8.000	5.250	F	7.250	8	.438	3.94-1.00K	4.000	3.500	6.3750	T	17N-20-12300	D
1710	8.000	7.750	F	7.250	8	3/8	1.250	4.000		6.3750		71SF-SRB	A
1710	8.000	7.750	F	7.250	8	3/8	2-1/2	4.000		6.3750		71SF-2.00-50	C
1710	8.000	7.750	F	7.250	8	3/8	2 1/8-5/8	4.000		6.3750		71SF-2.12-62	D
1710	8.000	7.750	F	7.250	8	3/8	2 1/4-1/2	4.000		6.3750		71SF-2.25-50	D
1710	8.000	7.750	F	7.250	8	3/8	2 1/4-5/8	4.000		6.3750		71SF-2.25-62	C
1710	8.000	7.750	F	7.250	8	3/8	2 3/8-5/8	4.000		6.3750		71SF-2.37-62	D
1710	8.000	7.750	F	7.250	8	3/8	2 7/16-5/8	4.000		6.3750		71SF-2.43-62	C
1710	8.000	7.750	F	7.250	8	3/8	2 1/2-5/8	4.000		6.3750		71SF-2.50-62	C
1710	8.000	7.750	F	7.250	8	3/8	2 3/4-5/8	4.000		6.3750		71SF-2.75-62	A
1710	8.000	7.750	F	7.250	8	3/8	2 15/16-3/4	4.000		6.3750		71SF-2.93-75	B
1710	8.000	7.750	F	7.250	8	3/8	3-3/4	4.000		6.3750		71SF-3.00-75	C
1710	8.000	7.750	F	7.250	8	3/8	3 1/2-7/8	4.000		6.3750		71SF-3.50-87	A
1710	8.000	7.750	F	7.250	8	3/8	3 15/16-1	4.000		6.3750		71SF-3.93-10	C
1710	8.000	7.750	F	7.250	8	3/8	4-1	4.000		6.3750		71SF-4.00-10	D
1710	8.000	7.750	F	7.250	8	3/8	2.000	4.000		6.3750		71SLF-LRB	B
1810	8.000	7.750	F	7.250	12	.438	2.00-10	3.625	3.000	3.5000	G	18N-1-1601X	D
1810	8.000	7.750	F	7.250	12	.438	2.00-10	3.688	3.000	2.9375	G	18N-1-221	C



Series	O.D. "A"	Pilot "B"	Type	B.C. "C"	# of Holes	Hole Size	Spline/ Bore & Keyway	Overall "D"	Thru "E"	Hub "F"	Style	Part Number	Rating
1810	8.000	7.750	F	7.250	12	.438	2.25-10	3.688	3.000	3.5000	G	18N-1-151	D
1810	8.000	7.750	F	7.250	12	.438	2.36-18	4.031	3.375	3.5000	G	18N-1-1801	C
1810	8.000	7.750	F	7.250	12	.438	2.37-20		2.344	3.5000	G	18N-1-2161	D
1810	8.000	7.750	F	7.250	12	.438	2.50-.62K	4.000	4.000	6.3750	T	18N-1-533-2	D
1810	8.000	7.750	F	7.250	12	.438	2.75-10	3.688	3.125	3.7500	P	18N-1-1651	D
1810	8.000	7.750	F	7.250	12	.438	2.75-10	4.060	3.000	3.5000	P	18N-1-741	C
1810	8.000	7.750	F	7.250	12	.438	3.00-.75K	4.000	4.000	6.3750	T	18N-1-533-5	D
1810	8.000	7.750	F	7.250	12	.438	3.44-.88K	4.000	4.000	6.3750	T	18N-20-9400	D
1810	8.000	7.750	F	7.250	12	7/16-20	3.50	6.000	6.000	8.0000		18N-1-543	D
1810	8.000	7.750	F	7.250	12	.438	3.50-.87K	4.060	3.000	5.7500	T	18N-20-2740	D
1810	8.000	7.750	F	7.250	12	.438	3.94-1.00K	8.000	8.000	6.3750	T	18N-20-15330	D
1810	8.000	7.250	F	7.250	12	.438	3.94-1.00K	4.000	4.000	6.3750	T	18N-1-533-7	C
1810	8.000	7.750	F	7.250	12	7/16	1.250	4.000		6.3750		81SF-SRB	B
1810	8.000	7.750	F	7.250	12	7/16	2 7/16-5/8	4.000		6.3750		81SF-2.43-62	D
1810	8.000	7.750	F	7.250	12	7/16	2 1/2-5/8	4.000		6.3750		81SF-2.50-62	D
1810	8.000	7.750	F	7.250	12	7/16	2 3/4-5/8	4.000		6.3750		81SF-2.75-62	A
1810	8.000	7.750	F	7.250	12	7/16	2 15/16-3/4	4.000		6.3750		81SF-2.93-75	C
1810	8.000	7.750	F	7.250	12	7/16	3-3/4	4.000		6.3750		81SF-3.00-75	B
1810	8.000	7.750	F	7.250	12	7/16	3 1/2-7/8	4.000		6.3750		81SF-3.50-87	A



Series	O.D. "A"	Pilot "B"	Type	B.C. "C"	# of Holes	Hole Size	Spline/ Bore & Keyway	Overall "D"	Thru "E"	Hub "F"	Style	Part Number	Rating
1810	8.000	7.750	F	7.250	12	7/16	3 15/16- 1	4.000		6.3750		81SF- 3.93-10	D
1810	8.000	7.750	F	7.250	12	7/16	4-1	4.000		6.3750		81SF- 4.00-10	D
1810	8.000	7.750	F	7.250	12	7/16	2.000	4.000		6.3750		81SLF- LRB	C
1880	9.625	7.000	F	8.250	8	.625	2.75- 10	4.188	3.250	3.7500	G	185N-1- 211X	D
1880	9.310	7.000	F	8.250	8	.625	3.00- 10	4.750	3.000	4.0000	P	185N-20- 16110	D
1880	8.000	7.750	F	8.250	8	.625	3.50- .87K	5.000	4.875	6.8750	T	185N-20- 15910	D
1880	9.625	7.000	F	8.250	8	.625	3.94- 1.00K	5.000	5.000	6.8750	T	185N-1- 333-5	D
1880	9.563	7.000	F	8.250	8	.625	4.00- 1.00K	5.000	4.875	6.8750	T	185N-20- 15900	D
	4.720	3.126	M	3.969	4	7/16 -20	1.60- 15	3.156	1.750	2.1270	G	20-4080	D
	5.970	2.250	M	5.000	6	.500	1.75- 10	2.250	2.250	1.9750	T	20-8100	D
	8.000	6.438	M	7.250	8	3/8- 24	1.75- 10	3.688	2.000	3.1250	T	20-12930	C
	5.905	3.543	M	5.188	8	.483	1.75- 13	3.469	2.677	3.3400	T	20-8180	D
	6.000	5.625	F	4.700	6	0.50 -20	1.75-6	3.875	2.250	2.5000		20-11310	D
	6.225	5.087	M	5.586	12	.344	2.00- 10	3.000	3.00	2.7510	G	20-2730	D
	7.750	7.750	M	6.250	4	.875	2.00- 10	3.875	3.000	3.2530	G	5WCS32- 60	D
	8.500	5.875	M	7.250	12	.656	2.02- 39	3.125	2.437	2.7500	G	20-0050	D
	5.906	3.543	M	5.188	8	.476	2.04- 15	3.540	2.750	3.3438	T	20-13050	D
	7.093	4.329	F	6.122	8	.563	2.50- 10	3.500	3.375	5.2500		20-11580	D
	9.843	5.512	M	8.584	8	.708	2.75- 10	4.000	3.000	3.7550	G	20-5690	D