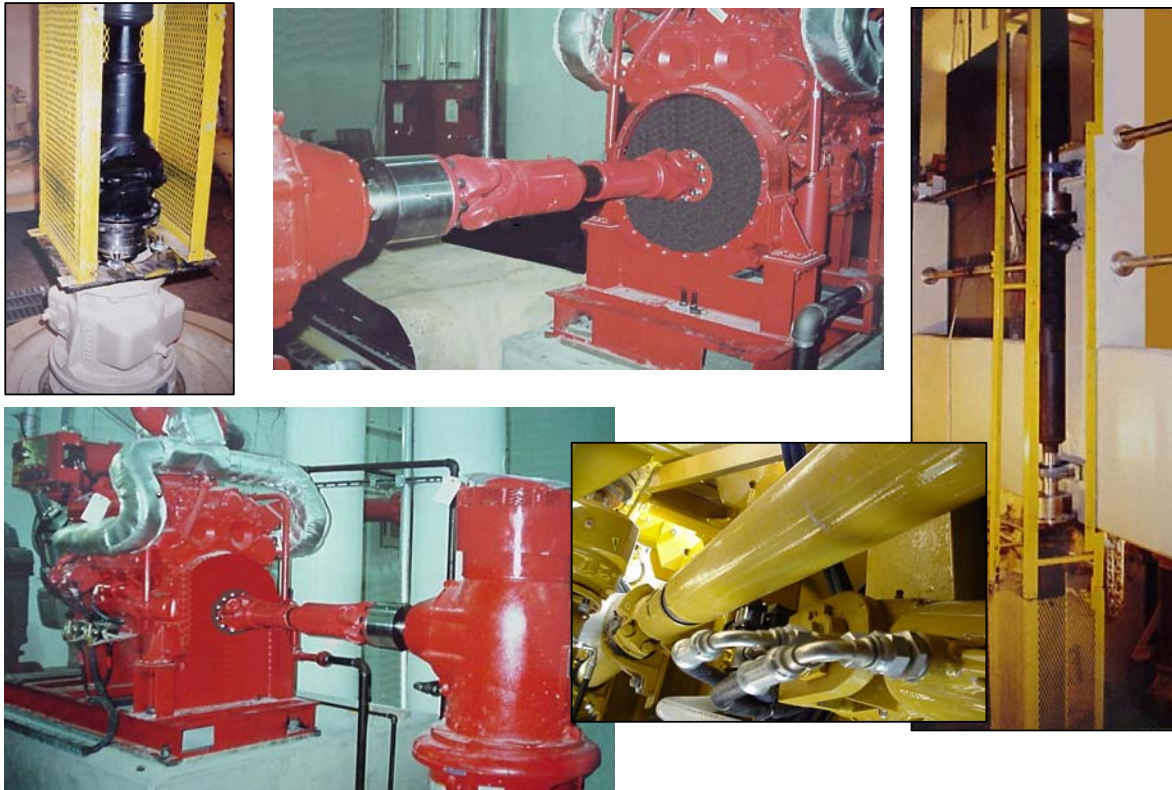




Certified Power Inc.

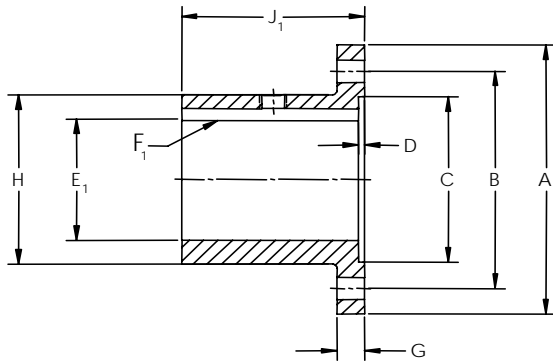
DRIVELINE DIVISION

DRIVELINE CATALOG

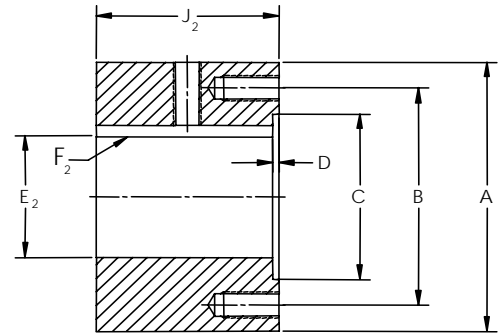


Certified Power Inc. - Driveline Division
390 Koopman Lane, Elkhorn, WI 53121-2020
Tel: 262.741.5600 Fax: 262.723.2785
E-Mail: [driveline @certifiedpower.com](mailto:driveline@certifiedpower.com)

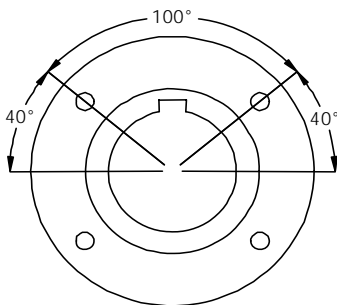
SAE Companion Flanges



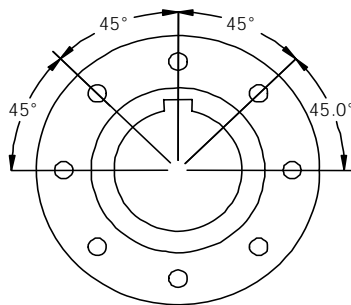
SF - Standard Flange



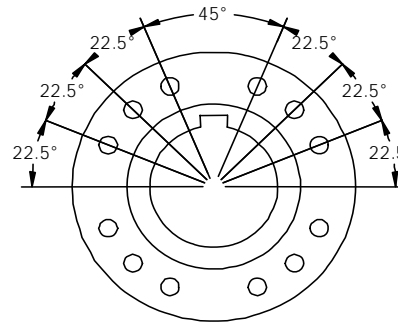
SLF - Standard Large



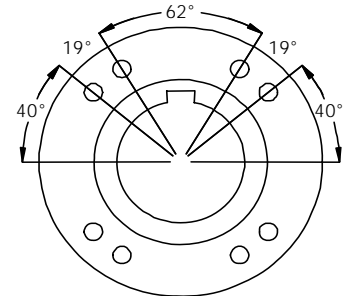
Style # 1



Style # 2



Style # 3

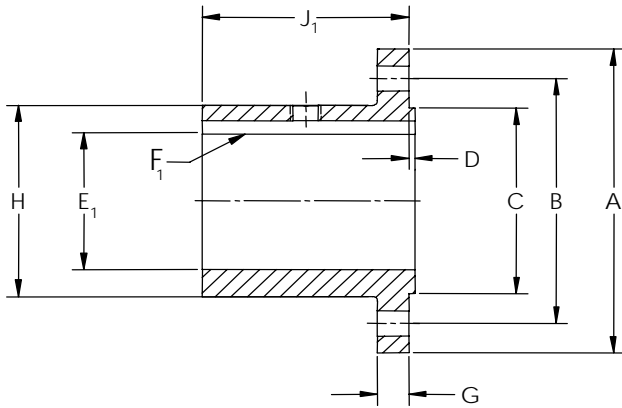


Style # 4

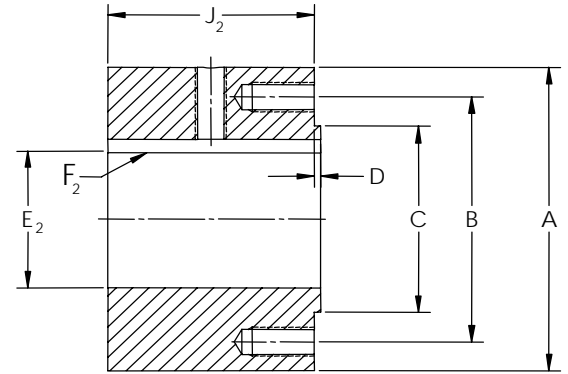
Item	Description	Series						
		1310	1350-1410	1480-1550	1610	1710	1810	1880
--	Style #	1	1	1	2	2	3	4
--	Number of Bolts	4	4	4	8	8	12	8
--	Thread Size	3/8-24	7/16-20	1/2-20	3/8-24	3/8-24	7/16-20	5/8-18
A	Outside Diameter	3.875	4.562	5.875	6.875	8.000	8.000	9.625
B	Bolt Circle	3.125	3.750	4.750	6.125	7.250	7.250	8.250
C	Pilot Diameter	2.375	2.750	3.750	6.625	7.750	7.750	7.000
D	Pilot Depth	0.078	0.078	0.094	0.063	0.063	0.063	0.141
E ₁	Maximum Bore (SF)	1.69	1.88	2.44	3.12	4.00	4.00	4.63
E ₂	Maximum Bore (SLF)	2.37	2.75	3.75	4.50	5.50	5.50	6.38
F ₁	Maximum Keyway (SF)	3/8 x 3/16	1/2 x 1/4	5/8 x 5/16	3/4 x 3/8	1 x 1/2	1 x 1/2	1-1/8 x 9/16
F ₂	Maximum Keyway (SLF)	5/8 x 5/16	3/4 x 3/8	1 x 1/2	1-1/8 x 9/16	1-1/4 x 5/8	1-1/4 x 5/8	1-1/4 x 5/8
G	Flange Width	0.38	0.38	0.38	0.44	0.44	0.44	0.63
H	Hub Diameter	2.44	2.88	3.75	5.25	6.38	6.38	6.88
J ₁	Length (SF)	2.00	2.00	2.50	3.50	4.00	4.00	5.00
J ₂	Length (SLF)	2.50	3.00	3.00	4.00	5.00	6.00	6.00
--	Rough Bore Dia (SF)	0.75	1.00	1.25	1.25	1.25	1.25	1.25
--	Rough Bore Dia (SLF)	1.25	1.50	1.50	2.00	2.00	2.00	4.25
--	Average Weight in Lbs (SF)	2.5	3.5	7.0	17.5	31.0	29.0	46.5
--	Average Weight in Lbs (SLF)	6.0	10.0	19.5	34.0	62.0	61.5	72.0

* Custom Flanges Quoted Upon Request

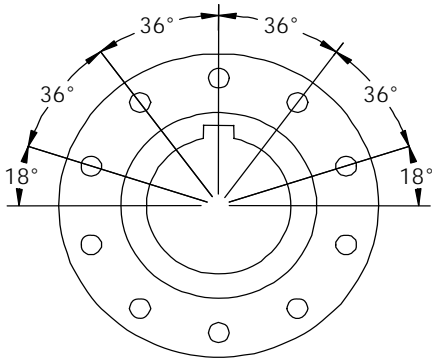
DIN Companion Flanges



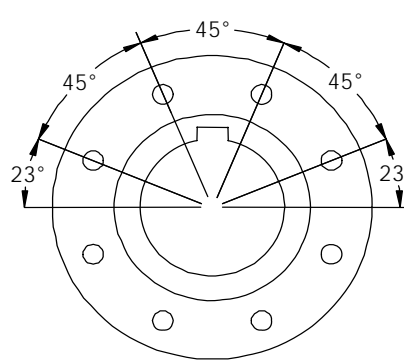
SF - Standard Flange



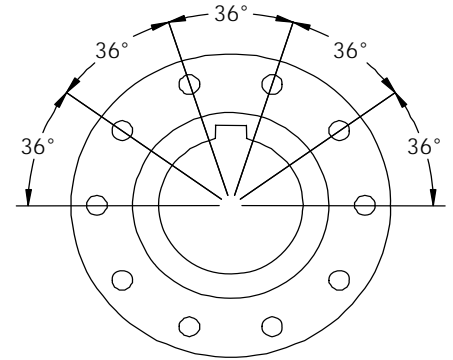
SLF - Special Large Flange



Style # 1



Style # 2



Style # 3

Item	Description	Series						
		180	225	250	285	315	350	390
--	Style #	1 or 2	2	2	2	2	3	3
--	Number of Bolts	8 or 10	8	8	8	8	10	10
--	Thread Size	5/8-18	5/8-18	18mm-2.5	20mm-2.5	22mm-2.5	22mm-2.5	24mm-3.0
A	Outside Diameter	7.090	8.858	9.843	11.220	12.402	13.780	15.354
B	Bolt Circle	6.122	7.717	8.583	9.646	11.024	12.205	13.583
C	Pilot Diameter	4.331	5.512	5.512	6.890	6.890	8.661	9.843
D	Pilot Depth	0.094	0.157	0.197	0.236	0.236	0.276	0.276
E ₁	Maximum Bore (SF)	3.44	4.44	4.94	5.56	6.44	7.25	8.06
E ₂	Maximum Bore (SLF)	4.13	5.88	6.56	7.50	8.25	9.00	10.00
F ₁	Maximum Keyway (SF)	7/8 x 7/16	1 x 1/2	1-1/4 x 5/8	1-1/2 x 3/4	1-3/4 x 5/8	2 x 11/16	2-1/4 x 3/4
F ₂	Maximum Keyway (SLF)	1 x 1/2	1-1/2 x 3/4	1-1/2 x 3/4	2 x 11/16	2-1/4 x 3/4	2-1/4 x 3/4	2-1/2 x 13/16
G	Flange Width	0.63	0.63	0.75	0.81	0.88	1.00	1.12
H	Hub Diameter	5.19	6.69	7.40	8.00	9.69	10.88	12.00
J ₁	Length (SF)	4.00	5.50	6.00	7.00	8.00	9.00	10.00
J ₂	Length (SLF)	4.50	7.25	8.25	9.38	10.25	11.25	12.25
--	Rough Bore Dia (SF)	1.00	1.50	1.75	2.00	2.25	2.50	2.75
--	Rough Bore Dia (SLF)	1.75	2.00	2.25	2.50	2.75	3.00	3.25
--	Average Weight in Lbs (SF)	21	51	67	96	155	205	284
--	Average Weight in Lbs (SLF)	41	94	144	209	283	374	514

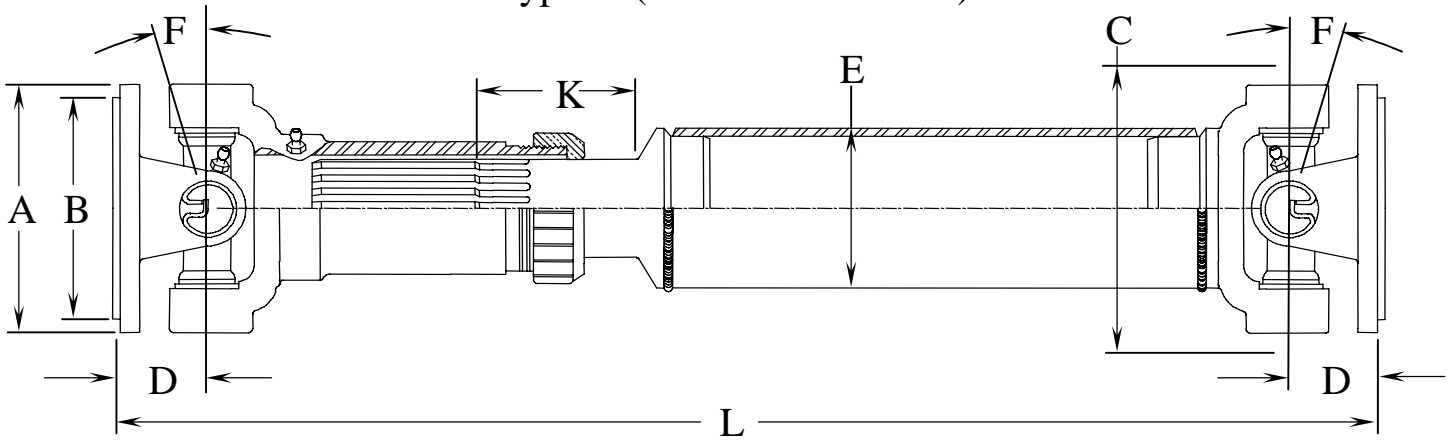
Driveshaft Dimensional Data - SAE

ID	Description	Units	Driveshaft Type(s)	SAE Series									
				1310	1350	1410	1480	1550	1610	1710	1810	1880	
A	Outside Diameter	in	All	3.88	4.56	4.56	5.88	5.88	6.88	8.00	8.00	9.63	
B	Pilot Diameter	in	All	2.38	2.75	2.75	3.75	3.75	6.63	7.75	7.75	7.00	
C	Swing Diameter	in	All	3.88	4.62	4.69	4.81	5.63	7.00	7.75	9.13	9.75	
D	Joint Center-Flange Face	in	S, SB	1.38	1.56	1.69	2.00	2.00	2.75	3.00	3.38	3.50	
E	Tube Dia. (Standard)	in	S, SB	2.50	3.00	3.50	3.50	3.50	3.50	4.00	4.50	4.50	
--	Wall Thickness (Standard)	in	S, SB	0.083	0.083	0.083	0.083	0.095	0.134	0.134	0.134	0.259	
E	Tube Dia. (Special)	in	S, SB	3.50	4.50	4.50	4.50	4.50	4.50	6.00	6.00	6.00	
--	Wall Thickness (Special)	in	S, SB	0.083	0.095	0.095	0.095	0.095	0.095	0.125	0.125	0.125	
F	Max. Joint Angle	deg's	S	20	20	22	22	22	22	22	22	30	22
			SC	15	8	8	8	10	8	8	12	8	
G	Steady Bearing Length	in	SB	6.00	6.00	6.00	8.00	8.00	8.00	8.00	8.00	8.00	
H	Steady Bearing Diameter	in	SB	1.187	1.187	1.437	1.687	1.937	1.937	2.187	2.437	2.937	
J	Flange Length	in	SB	2.06	2.06	2.56	2.12	2.94	3.00	3.69	3.75	4.62	
K	Total Slip Length	in	S	3.12	3.62	3.47	2.50	2.50	4.88	3.88	3.38	3.50	
			SC	1.25	0.75	0.75	1.00	1.00	0.74	0.74	1.12	1.00	
L	Standard Mid-Slip Length**	in	S	24, 36, or 48					28, 36, or 48			48	
L _{MIN}	Standard Minimum Collapsed Length	in	S	13.66	14.96	15.81	15.50	15.75	25.56	26.06	26.31	46.25	
			SB	13.00	13.00	14.00	16.00	17.00	18.00	19.00	20.00	22.00	
			SC	8.88	9.50	9.50	8.50	9.75	9.12	10.62	13.40	13.62	

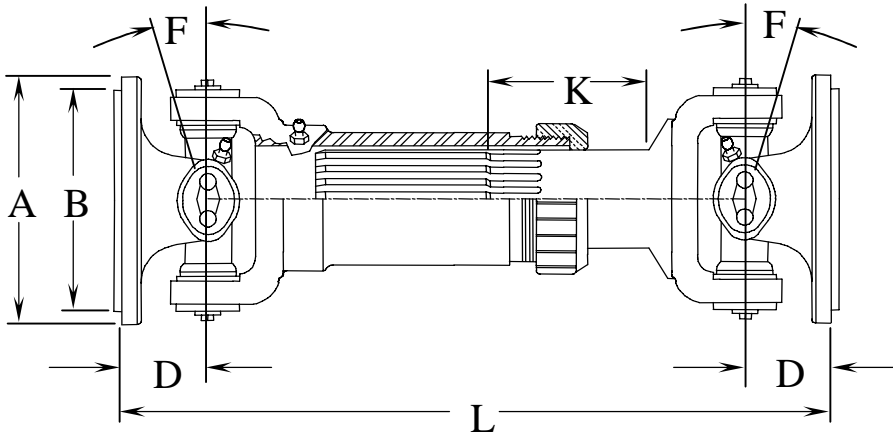


Driveshaft Dimensional Data - SAE

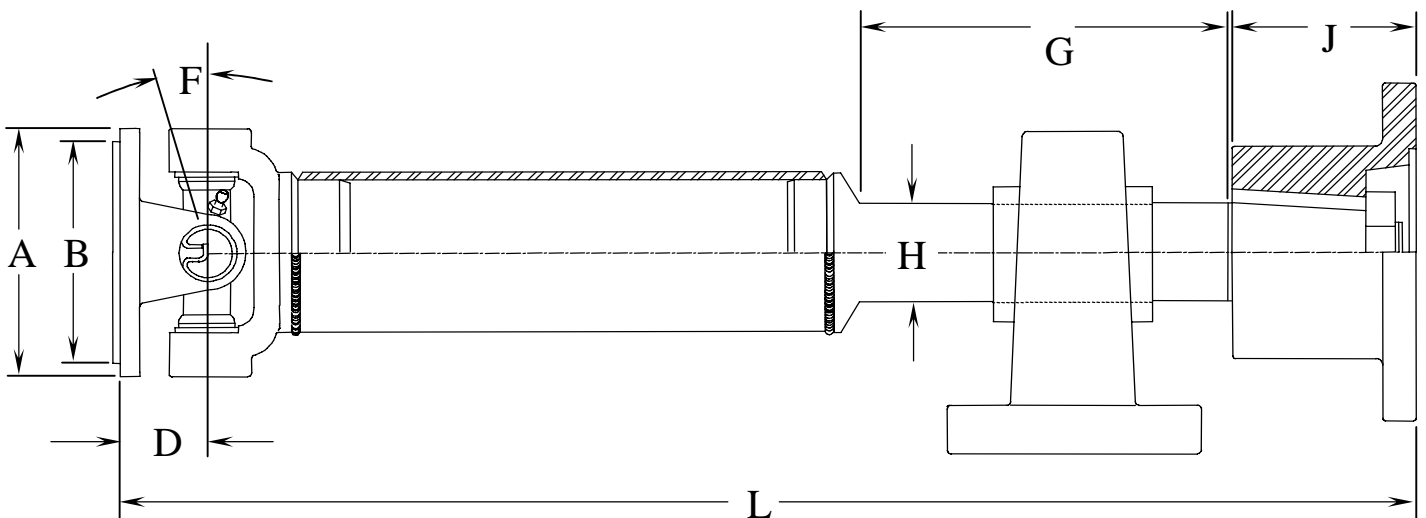
Type: S (Standard Driveline)



Type: SC (Short Coupled Driveline)



Type: SB (Steady Bearing Driveline)

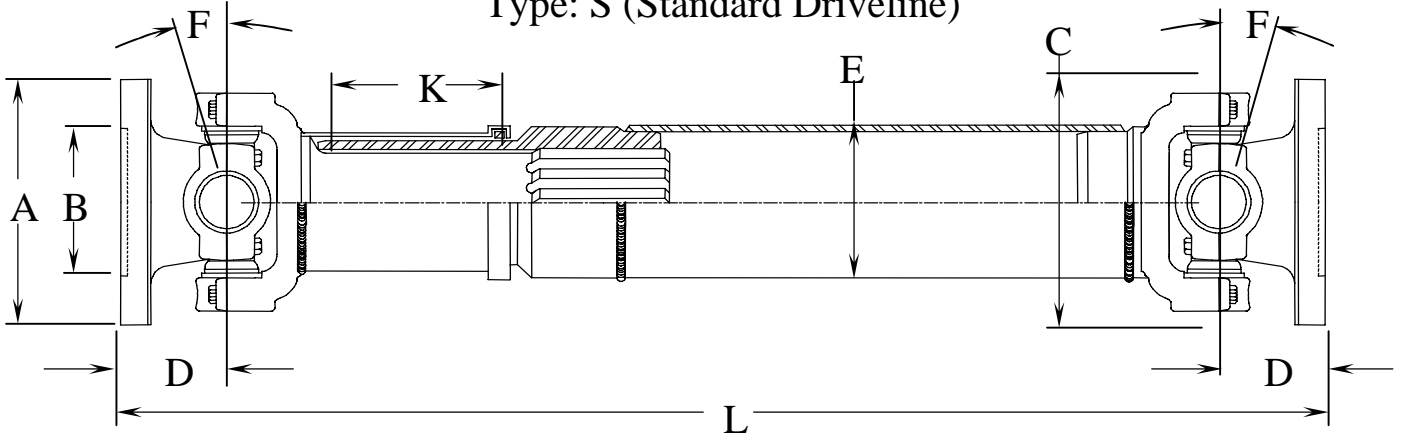


Driveshaft Dimensional Data - DIN

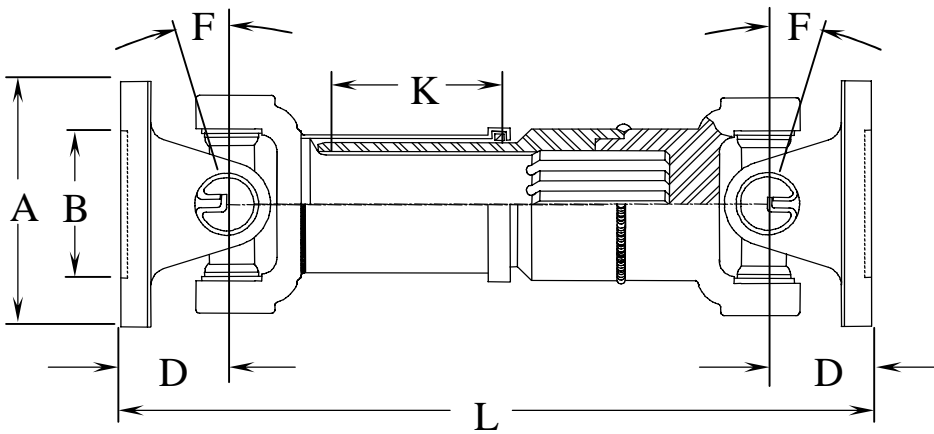
ID	Description	Units	Driveshaft Type(s)	DIN Series			
				180	225	250	285
A	Outside Diameter	in	All	7.087	8.860	9.843	11.220
B	Pilot Diameter	in	All	4.331	5.512	5.512	6.890
C	Swing Diameter	in	All	7.00	8.03	8.86	9.84
D	Joint Center-Flange Face	in	All	3.78	4.33	4.92	5.12
E	Tube Diameter	in	All	4.500	5.000	5.750	6.500
--	Wall Thickness	in	All	0.375	0.375	0.375	0.500
F	Max. Joint Angle	Deg's	All	30	30	18	15
--	Pilot Depth	in	All	0.142	0.197	0.236	0.276
--	Flange Width	in	All	0.551	0.590	0.709	0.788
--	Bolt Circle Diameter	in	All	6.122	7.717	8.583	9.646
--	Bolt Diameter	in	All	0.634	0.634	0.712	0.791
--	Standard Number of Holes	in	All	10	8	8	8
--	Bearing Diameter	in	All	2.244	2.560	2.913	3.268
K	Total Slip Length	in	S	4.33	5.51	5.51	5.51
			SC	2.17	1.57	3.15	1.77
L	Minimum Collapsed Length	in	S	29.13	32.68	36.42	36.81
			SC	18.50	21.65	28.35	31.50

Driveshaft Dimensional Data - DIN

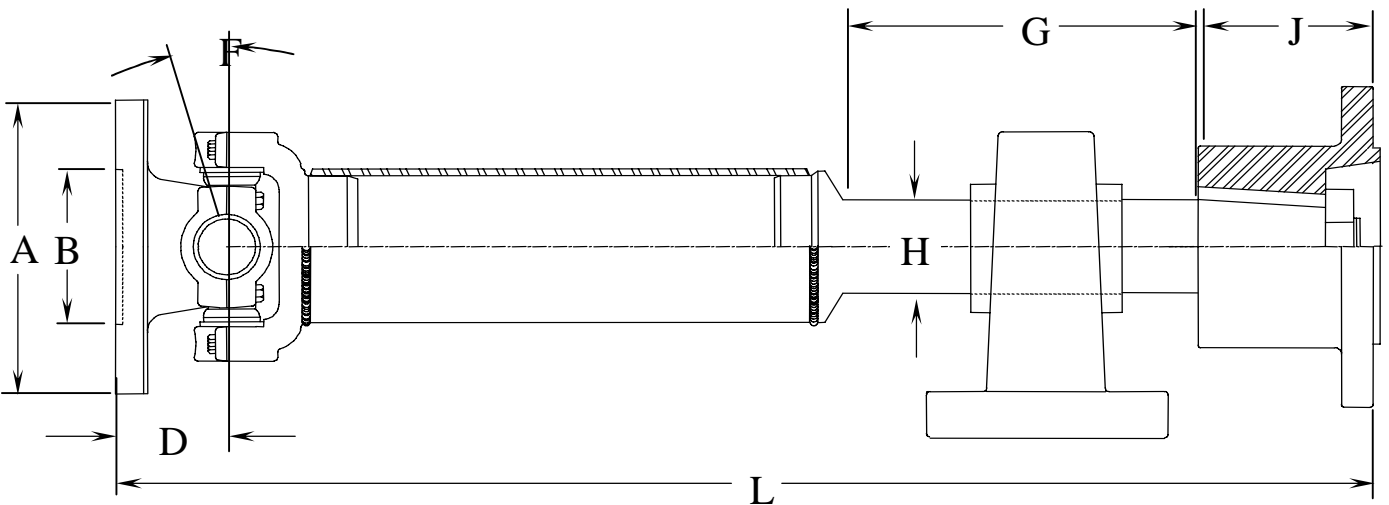
Type: S (Standard Driveline)



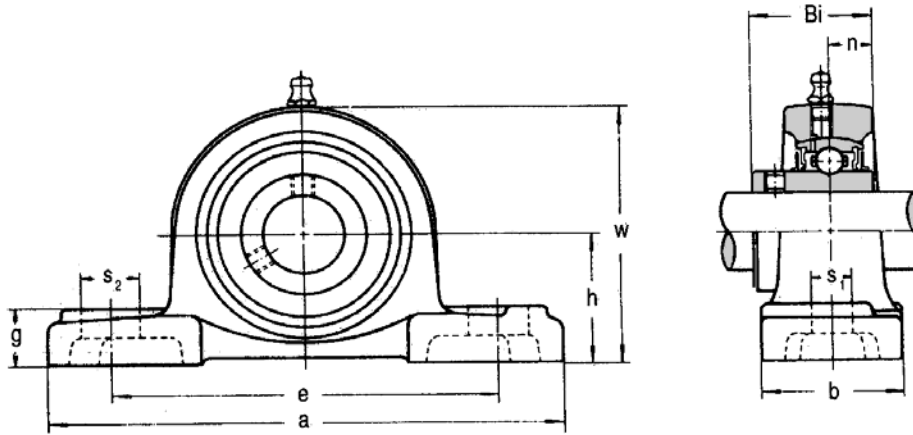
Type: SC (Short Coupled Driveline)



Type: SB (Steady Bearing Driveline)

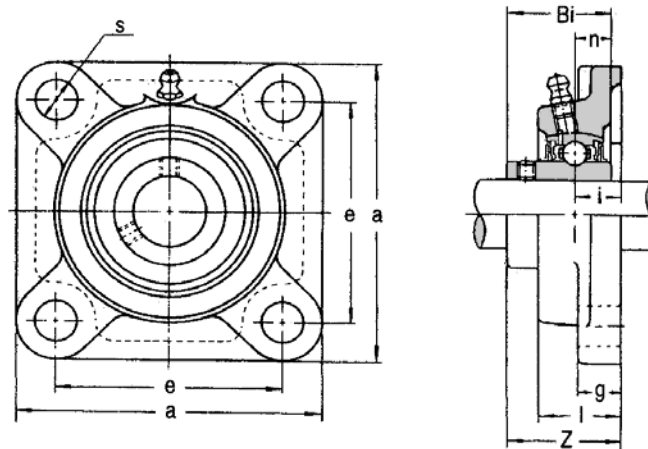


Pillow Block Steady Bearings



Shaft Series	Part Number	Shaft Dia	Dimensions										Bolt Size	Weight (lbs)
			h	a	e	b	s1	s2	g	w	Bi	n		
1310, 1350	UCP206-19	1-3/16	1-11/16	6-1/2	4-3/4	1-7/8	21/32	13/16	23/32	3-9/32	1.500	.626	1/2	2.87
1410	UCP207-23	1-7/16	1-7/8	6-9/16	5	1-7/8	21/32	13/16	3/4	3-11/16	1.689	.689	1/2	3.53
1480	UCP209-27	1-11/16	2-1/8	7-1/2	5-3/4	2-1/8	21/32	7/8	25/32	4-1/4	1.937	.748	1/2	5.35
1550, 1610	UCP210-31	1-15/16	2-1/4	8-1/8	6-1/4	2-3/8	25/32	1	7/8	4-1/2	2.032	.748	5/8	5.95
1710	UCP211-35	2-3/16	2-1/2	8-5/8	6-3/4	2-3/8	25/32	1	7/8	4-31/32	2.189	.874	5/8	7.27
1810	UCP212-39	2-7/16	2-3/4	9-1/2	7-1/4	2-3/4	25/32	1	1	5-7/16	2.563	1.000	5/8	10.36
180, 225	UCP215-47	2-15/16	3-1/4	10-13/16	8-1/2	2-15/16	1	1-7/32	1-3/32	6-13/32	3.063	1.311	3/4	17.41
250	UCPX17-55	3-7/16	4	15	11-1/8	4	1-1/16	2-5/16	1-21/32	7-15/16	3.780	1.563	7/8	37.69

Flange Steady Bearings



Shaft Series	Part Number	Shaft Dia	Dimensions										Bolt Size	Weight (lbs)
			a	e	i	g	l	s	Z	Bi	n			
1310, 1350	UCF206-19	1-3/16	4-1/4	3-1/4	0.709	9/16	1-7/32	15/32	1.583	1.500	0.626	3/8	2.42	
1410	UCF207-23	1-7/16	4-5/8	3-5/8	0.748	5/8	1-11/32	35/64	1.748	1.689	0.689	1/2	3.31	
1480	UCF209-27	1-11/16	5-3/8	4-1/8	0.866	23/32	1-1/2	5/8	2.055	1.937	0.748	1/2	5.29	
1550, 1610	UCF210-31	1-15/16	5-5/8	4-3/8	0.866	23/32	1-9/16	5/8	2.150	2.031	0.748	1/2	5.51	
1710	UCF211-35	2-3/16	6-3/8	5-1/8	0.984	25/32	1-11/16	3/4	2.299	2.189	0.874	5/8	7.49	
1810	UCF212-39	2-7/16	6-7/8	5-5/8	1.142	25/32	1-7/8	3/4	2.705	2.563	1.000	5/8	10.14	
180, 225	UCF215-47	2-15/16	7-7/8	6-1/4	1.339	15/16	2-7/32	3/4	3.091	3.063	1.311	5/8	15.21	
250	UCFX17-55	3-7/16	8-7/16	6-3/4	1.575	15/16	2-3/4	29/32	3.791	3.780	1.563	3/4	22.48	

Lubrication

Every driveline needs a proper lubrication schedule to ensure maximum bearing life and optimum performance.

1. Cross & bearings and telescoping slip-spline must be lubricated prior to installation to avoid premature failure.
2. For cross & bearings and steady-bearings use only grease which meets or exceeds an NLG1 grade #2 with an “EP” (extreme pressure) additive. Shell Alvania EP-2 is sufficient in this circumstance.
3. For slip-spline member it is recommended to use a **long fibrous** extreme pressure (EP) grease satisfying NLG1 #1 or #2 such as Texaco Multifak EP2.
4. Addition of lubricant to cross & bearing should only be done until grease appears at all four bearing seals. If all four bearing caps do not purge, try moving u-joint back and forth in all directions to loosen up the seal and regrease. At slip-spline member grease should appear at pressure relief hole when full.
5. Shaft support bearings are prepacked by the bearing supplier and require no additional lubrication. Follow manufacturers recommended lubrication intervals when greasing support bearings. Upon lubricating support bearings use only a .28oz charge (three hand pumps of grease gun) unless told otherwise.
6. Lubrication schedules should follow these simple recommendations. Grease U-joints every 500 hours of normal service or every 200 hours of continuous service. Extreme conditions such as high temperatures, corrosive environments or severe shock loading may require special grease and/or intervals. The slip-spline should be lubricated each time the U-joints are serviced.

Transport and Storage

To ensure your drivelines are safe from shipping and storage follow these guidelines.

1. Upon receiving your drivelines perform a thorough examination of all equipment before installation. Note any damage to shafting right away and contact the freight carrier with complaints.
2. All transport and storage should be in a horizontal position. Never stack driveline crates or objects on crates.
3. **Long-term storage requires shafting to be protected from the elements and all machined surfaces sprayed with a rust inhibitor monthly.**